

ECHO HAWAII™

33rd ANNUAL



FINAL PROGRAM

January 15–19, 2024

Fairmont Orchid
Kohala Coast, Big Island, HI

Course Director

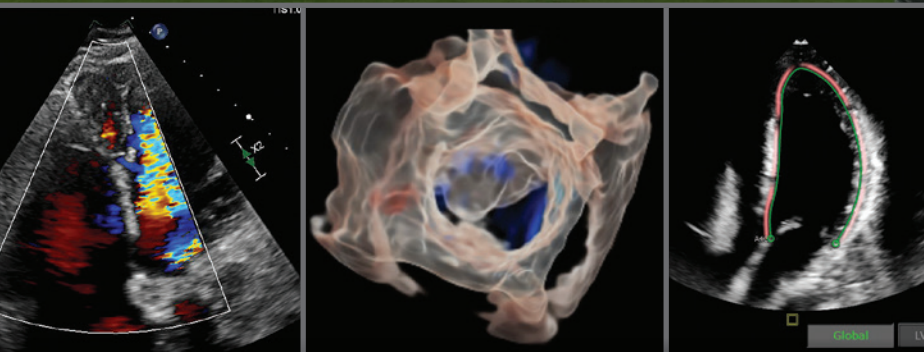
Jonathan R. Lindner, MD, FASE

Past President, ASE
University of Virginia Medical Center
Charlottesville, VA

Course Co-Director

Sharon L. Mulvagh, MD, FASE

President, CSE
Dalhousie University
Halifax, NS, Canada



Jointly provided by ASE and the ASE Foundation, and held in cooperation with the Canadian Society of Echocardiography.

Welcome Message and Faculty

Welcome Message

On behalf of the ASE, welcome to the Big Island! Whether you are a regular attendee or a first-time visitor, we are certain you will enjoy the experience and come away with new knowledge and skills that will enhance your ability to care for your patients. The meeting will focus on state-of-the-art echocardiography and how it is applied to clinical decision-making. The international faculty at Echo Hawaii are world-renowned not only for their clinical expertise, but also for their teaching prowess. We will start each day early and pack every morning with lectures, cases, and plenty of interactive sessions. In the afternoons on Monday to Thursday, you will have the opportunity to attend case-based workshops, balanced with time to spend enjoying the Big Island with friends and family. Workshop topics include practical aspects of 3D echocardiography, advanced methods for quantification in echo, the use of echo for guidance in optimizing drug therapy, and a one-of-a-kind opportunity to participate in live demonstrations of contrast echo including myocardial perfusion imaging.

Of the many things that make Echo Hawaii special, what stands out is your opportunity to learn in a relaxed and collegial environment that encourages interaction with luminaries in cardiovascular imaging. The faculty are approachable and will be amongst you hanging at the pool, swimming, boogie-boarding and relaxing at the beach, and quite possibly at the Luana Lounge sipping a Mai Tai at sunset. For the “ice-breaker” (literally for those coming from cold climates), you won’t want to miss the Aloha Welcome Reception on Monday evening featuring local cuisine, libations, and music. These events provide a great opportunity to interact with faculty, colleagues, and exhibitors in a casual setting.

Echo Hawaii is much more than education. After all you are in Hawaii! The Big Island has something for everyone. This is our inaugural year at the Fairmont Orchid where you can enjoy the world-class “Spa Without Walls”, the award-winning golf course with spectacular ocean views, and all that the Hui Holokai Beach Club has to offer (snorkeling or scuba along the unique volcanic reefs, experiencing outrigger adventures, and more). You may even want to head down the coast for surfing lessons, irrespective of your level of experience. There are plenty of hikes, some easy and some challenging, that traverse incredibly diverse microclimates ranging from volcanic hills, tropical forests, waterfalls, and black sand beaches. For the more adventurous, take a walk on the wild side in Volcano National Park where the landscape is always changing and often you can hike right up to rivers of lava (with appropriate footwear). If you are astronomically inclined, tour the top of the Big Island’s 14,000-foot Mauna Kea volcano for an evening of unmatched stargazing, but bring something warm to wear! In addition, Echo Hawaii takes place during peak humpback whale watching season, something you won’t want to miss.

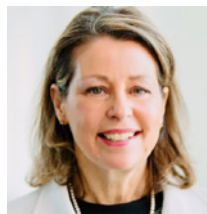
Not feeling so adventurous? You can always just lay on the beach or by the ocean-side pool, immersed in a good book, and be glad you’re not shoveling snow! There is lots to do with the little ones too, and the Fairmont has a kiddie camp that can free you up as needed, while they have a blast! There is plenty of room to roam - the resort features 32 ocean front acres! On the Kohala Coast, there is sunshine almost all year round with an average temperature of 78-80 degrees Fahrenheit in January. You will also find a wide variety of world-class restaurants on property or close-by for every budget and taste.

Enjoy your time and thank you for coming to experience Echo Hawaii 2024! Your presence and participation here enriches the experience for all!

Aloha and Mahalo!



Course Director
Jonathan R. Lindner, MD, FASE
Past ASE President
University of Virginia Medical Center
Charlottesville, VA



Course Co-Director
Sharon L. Mulvagh, MD, FASE
President CSE
Dalhousie University
Halifax, NS, Canada

Faculty

Bonita A. Anderson, M.APPL.SC, DMU, AMS, ACS, FASE

The Prince Charles Hospital
Brisbane, QLD, Australia

Michael Chetrit, MD

McGill University Health Center
Montreal, QC, Canada

Anthony N. DeMaria, MD, FASE

Past President, ASE
University of California – San Diego
San Diego, CA

Benjamin W. Eidem, MD, FASE

President, ASE
Mayo Clinic
Rochester, MN

Bethany A. Gholson, BS, RCS

University of Virginia Medical Center
Charlottesville, VA

Allison Hays, MD, FASE

Johns Hopkins University
Clarksville, MD

James Hodovan, PhD, RDCS (AE,PE)

Oregon Health & Science University
Portland, OR

Roberto M. Lang, MD, FASE

Past President, ASE
University of Chicago Medical Center
Chicago, IL

Christina L. Luong, MD, FASE

University of British Columbia
Vancouver, BC, Canada

Gillian Nesbitt, MD, FASE

University of Toronto
Toronto, ON, Canada

Jae Oh, MD, FASE

Mayo Clinic
Rochester, MN

Amit R. Patel, MD

University of Virginia Medical Center
Charlottesville, VA

Dermot Phelan, MD, PhD, FASE

Sanger Heart and Vascular Institute
Charlotte, NC

Thomas Ryan, MD, FASE

Past President, ASE
Duke University Hospital
Durham, NC

Gregory M. Scalia, MBBS, FASE

Prince Charles Hospital
Brisbane, QLD, Australia

Madhav Swaminathan, MD, FASE

Past President, ASE
Duke University Medical Center
Durham, NC

James D. Thomas, MD, FASE

Past President, ASE
Northwestern Medicine
Chicago, IL

Program Information

Overview of Echo Hawaii

Echo Hawaii is one of ASE's premier educational programs. Attendees receive in-depth, case-based learning on established and emerging cardiovascular ultrasound technologies in a beautiful and relaxed environment. Particular focus is placed on the application of advanced cardiovascular imaging technologies in the clinical setting. The program is structured to allow attendees to closely interact on a personal level with internationally recognized leaders in echocardiography, including special sessions on clinical dilemmas and technology-based workshops.

Program content includes state-of-the-art methods for evaluating ventricular systolic and diastolic function, valve function, pericardial disease, ischemic heart disease, critical care echo, and use of TEE. Content also includes cutting edge information on the assessment and guidance of cardiac devices, integration of echo in patients with cardiomyopathies, contrast ultrasound for cavity opacification and perfusion, strain echocardiography, and 3D imaging.

Who Should Attend

This course is designed for adult cardiologists, critical care specialists, cardiovascular surgeons, cardiovascular anesthesiologists, fellows in training, cardiovascular sonographers, internists, veterinarians, and intensive care specialists with special interest in echocardiography.

Learning Objectives

Upon completion of this program, participants will be better able to:

- Integrate echocardiographic information in clinical decision making.
- Assess ventricular and valvular function using advanced technologies and Doppler hemodynamics.
- Describe Doppler assessment of diastolic function/dysfunction.
- Explain new advances in the echocardiographic assessment of left and right ventricular function.
- Integrate echocardiographic assessment of cardiomyopathies and systemic diseases in patient management.
- Define clinical uses of TEE and 3D echocardiography.
- Recognize how echocardiography is used to help manage patients with ischemic heart disease.
- Recognize the role of echo contrast and be able to incorporate its use in the echo laboratory.
- Integrate echo information in the management of complex valvular heart disease.
- Explain the role of echocardiography in the perioperative and critical care environment.
- Explain how management for heart failure can be guided by echocardiography.
- Recognize emerging applications such as myocardial perfusion imaging, artificial intelligence, etc.
- Manage patients according to new guideline documents.
- Understand the role of echocardiography in aortic disease.

Disclaimer

The information provided during this CME activity is for continuing education purposes only and is not meant to substitute for the independent medical judgment of a healthcare provider relative to diagnostic and treatment options of a specific patient's condition.

Accreditation and Designation

ASE is accredited by the Accreditation Council for Continuing Medical Education (ACCME) to provide accredited continuing education for physicians.

ASE designates this live course for a maximum of **31.0 AMA PRA Category 1 Credits™**. To claim all 31.0 CME credits, you must attend all afternoon workshops.

In addition to offering CME credits, this activity has been developed and registered with ACCME to provide **MOC, MOC Part 2, and MOCA 2.0 points** in alignment with *AMA PRA Category 1 Credit™*.

Successful completion of this CME activity enables the participant to earn up to 31.0 MOC points in the American Board of Internal Medicine's (ABIM) Maintenance of Certification (MOC) program, the American Board of Pediatrics (ABP) MOC program, and/or the American Board of Anesthesiology's (ABA) Maintenance of Certification in Anesthesiology Program® or MOCA 2.0®. It is ASE's responsibility to submit participant completion information to ACCME for the purpose of granting ABIM and ABP MOC points and/or ABA MOCA 2.0®.

Participants should claim only the credit commensurate with the extent of their participation in the activity. Physicians will earn MOC and/or MOCA 2.0 points equivalent to the amount of CME credits claimed for the activity.

ARDMS, CCI, and Sonography Canada recognize ASE's certificates and have agreed to honor up to 31 CME credit hours toward their registry requirements for sonographers.

PAs may claim a maximum of 31.0 Category 1 credits for completing this activity. NCCPA accepts AMA PRA Category 1 Credit™ from organizations accredited by ACCME or a recognized state medical society.

ASE's 33rd Annual Echo Hawaii has been reviewed by the British Society of Echocardiography and is approved for BSE Points.



Maintenance of Certification in Anesthesiology Program® and MOCA® are registered certification marks of the American Board of Anesthesiology®. MOCA 2.0® is a trademark of the American Board of Anesthesiology®.

Daily Breakdown of CME/MOC Credits:

Monday, January 15, 2024 = 6.0 hours

Tuesday, January 16, 2024 = 6.75 hours

Wednesday, January 17, 2024 = 6.75 hours

Thursday, January 18, 2024 = 6.75 hours

Friday, January 19, 2024 = 4.75 hours

Disclosure

ASE is committed to ensuring that its educational mission, and all accredited continuing educational programs provide a protected space to learn, teach, and engage in scientific discourse free from influence from organizations that may have an incentive to insert commercial bias into education.

While a monetary or professional affiliation with an ineligible company does not necessarily influence a speaker's presentation, the Standards for Integrity and Independence in Accredited Continuing Education and policies of the ACCME require that all financial relationships with ineligible companies be identified and mitigated prior to engaging in an accredited CE activity. In accordance with these policies, ASE actively identified relevant financial relationships between faculty in control of this accredited CE activity and ineligible companies, and implemented mitigation strategies to eliminate any potential influence from persons or organizations that may have an incentive to insert commercial bias in this activity. Disclosure information is referenced and can be found on page 9 of this program.

Commercial Support Disclosure Statement

Educational Grants: This accredited CE activity is supported in part by unrestricted educational grants from Anylam, Bristol Myers Squibb, Bracco, Lantheus Medical Imaging, Inc. and Medtronic.

In-Kind Donations: This accredited CE activity is supported in part by in-kind donations from GE Healthcare and Philips.

How to Claim CME/MOC

To claim your CME for Echo Hawaii, please follow the steps below using your Mozilla Firefox, Google Chrome, or Safari browser. Internet Explorer will not work. The deadline to claim credit is **February 28, 2024**.

How to claim your CME credits:

An email will be sent to you on Friday, January 19 at 3:00 PM ET with instructions on how to complete the evaluation and claim your CME credits. Be sure to enter your specialty board number (ABIM, ABA, ABP, ARDMS, CCI) in order for your credits to be transferred.

Registration Location and Hours

The ASE Registration desk is located outside the Grande Ballroom. **ASE strongly recommends that you visit the registration desk on Sunday, January 14, to ensure no sessions are missed Monday morning.** ASE staff will be happy to renew your ASE membership or discuss the wide variety of educational products that are available for a discount during the course. The Registration desk will be staffed during the following hours:

Sunday, January 14 4:00 PM – 6:00 PM

Monday, January 15, through Friday, January 19, the registration desk will be open during all session hours.

Food Functions

ASE will provide breakfast and coffee breaks for registered attendees in Grande Ballroom Salon 1 from 6:30 AM until the start of the session each morning.

A boxed lunch will be provided on Tuesday and Thursday in Grande Ballroom Salon 2-3 during the workshop sessions.

Please refer to the program schedule for the times of the daily coffee breaks. The Fairmont Orchid offers guests a variety of dining options. Please see below for more details.

Welcome Reception

Sponsored by Lantheus Medical Imaging, Inc.

ASE cordially invites you and your guests to the 33rd Annual Echo Hawaii Welcome Reception on Monday evening, January 15, 5:00 – 6:00 PM in

Location Information

The Big Island, Hawaii

You will have some free time to enjoy the many sights and activities available on the Big Island such as snorkeling, whale watching, visiting the Volcano National Park, or driving to the summit of the tallest mountain in the world when measured from its oceanic base, Mauna Kea. The Fairmont Orchid is among the best luxury resorts in Hawaii offering exceptional resort amenities, including the open-air Spa Without Walls, oceanfront fine dining, and unique Hawaiian cultural experiences like learning the hula and making a lei. With each step of your journey, the Fairmont Orchid provides endless possibilities for adventure, wellness, and restoration. Visit the concierge for a full list of amenities and island offerings.

Fairmont Orchid Dining Options

Brown's Beach House: The vistas alone are worth a leisurely evening at Brown's Beach House, the AAA Four Diamond restaurant nestled elegantly above Pauoa Bay. The Fairmont Orchid's signature fine dining restaurant, Brown's Beach House is famed for its exquisite Hawaii Island-inspired cuisine and spectacular oceanfront views, accompanied by live Hawaiian music and magnificent sunsets. For a truly unforgettable experience, we invite you to book a private dining space, ideal for a romantic dinner for two or an elegant occasion with family and friends. Dinner 5:30–8:30 PM daily. Reservations highly recommended.

Attendee Information & Regulations

the Coconut Grove. The casual reception includes Hawaiian hors d'oeuvres, beverages, and local music. We look forward to welcoming you to paradise and providing you the perfect opportunity to meet faculty, friends, and colleagues.

Internet Access

Attendees of the course receive complimentary internet in their guest rooms at the Fairmont Orchid. There is WiFi access in the meeting room.

Username: ASE2024

Password: EchoHawaii

Business Center

The Business Center is located in the Convention Center and is open daily. It offers fax, photo-copier, mail, and computer services.

Safety

Audience seating is on a first-come, first-served basis. According to fire code, a session must be closed if the room fills to capacity. Inappropriate behavior or undesirable conduct, including, but not limited to, verbal or physical abuse, whether threatened or performed, will not be permitted or tolerated. You must wear your name badge at all times when attending the sessions.

Photography/AV Policy

No person may record any portion of the 33rd Annual Echo Hawaii, either by video, still or digital photography, audio or any other recording or reproduction mechanism. This includes recording of presentations

and supporting audio visual materials and of poster presentations and supporting poster materials.

Taking photos of, or recording the content of, presentation slides is also prohibited and is considered intellectual piracy. Attendees who ignore this policy will be asked to leave the educational session and are at risk of losing their name badge and attendance privileges. Photographs taken for the purpose of sharing on social media is allowed, but should avoid showing presentation slides. Please use **#EchoHawaii** when posting on social media.

ASE reserves the rights to all recordings or reproductions at ASE meetings. Please be aware that during the 33rd Annual Echo Hawaii, attendees, vendors, guests and exhibitors may be photographed or videotaped by ASE staff capturing the event. Some of these photographs or videos may be displayed by ASE in future publications or other materials. By virtue of your attendance, you agree to allow ASE to use photographs of you in its promotional materials.

Mobile Device Use

We encourage you to use your mobile device to download Whova, the new app ASE is using for live courses. Whova will give you access to the entire meeting program at your fingertips. You can also use the app to ask questions during the sessions you attend. Search "Whova" in the Google Play and Apple Stores to download. For more details on the Whova app and using it at Echo Hawaii, see page 11. **Please remember to turn your mobile device to silent or vibrate mode.**

Orchid Court: Fuel up for a big day of ocean and island adventures. Take your time over a hearty breakfast and indulge in our extensive island breakfast buffet, featuring tropical fruit, fresh baked pastries, traditional breakfast favorites, Asian specialties, a made-to-order omelet station, coffee, juice and much more!

Binchotan Bar & Grill: Explore the long-running creative culinary exchange between Hawaii and Japan firsthand at our traditional northern Japanese grill. It's called robatayaki: the centuries-old practice of fireside cooking. And what it is, is delicious. Friday through Tuesday 5:00–9:00 PM. Reservations highly recommended.

Brown's Deli: Brown's Deli offers breakfast and lunch items delicatessen style with an island flair to enjoy at outdoor tables or down at the beach. It's a great place to pick up food gifts to take home, with every item made either on the Big Island or in the state of Hawaii. Open daily 6:30 AM–5:00 PM.

Hale Kai Restaurant: With the warmth of aloha, welcome to Hale Kai! Days are spent enjoying time with the sea, sun and friends. Located poolside, Hale Kai is the perfect venue for a most refreshing lunch, tropical drinks or a casual dinner with sunset views. Open daily for lunch & dinner 11:00 AM–9:00 PM. No Reservations. Come as you are. It's casual!

Luana Lounge: Share island-inspired, hand-crafted sushi and cocktails in our dedicated, lobby-level lounge space. This idyllic spot was made for intimate celebrations, romantic dates and special gatherings. Mark another day of R&R by sipping chilled wine, specialty drinks and fresh sushi rolls. Beverage Service 4:00–11:00 PM. Food Service 5:00–10:00 PM. Happy Hour 4:00–5:00 PM (30 percent off drinks).

In Room Dining: In Room Dining at Fairmont Orchid is a pleasant experience in convenience and comfort. Perfect for early-risers, a romantic dinner for two or small gatherings, choose from signature gourmet dishes or hearty 'just like home' selections without having to leave the comfort of your guest room. Place your order from your guest room by dialing extension 7426. Breakfast 6:30–10:30 AM. Dinner 5:30 PM to 12:00 AM.

Hawai'i'loa Lu'au: Your visit to Hawaii is not complete without going to a lu'au! Indulge in a decadent Hawaiian lu'au feast at Fairmont Orchid's picturesque Plantation Estate. Once a gathering place for the kings and chiefs of Hawai'i, it's now home to vibrant hula performances, Samoan fire knife dancing and authentic Hawaiian food for your whole family. Indulge in Hawai'i's finest cuisine at this spectacular dinner with a hosted bar. Every Saturday. Seating begins at 5:30 PM. Lu'au Dinner Buffet begins at 6:00 PM. Hula performance begins at 7:00 PM. Reservations highly recommended.

Schedule of Events

SUNDAY, JANUARY 14, 2024

4:00 – 6:00 PM **Registration**
Grande Ballroom Foyer

MONDAY, JANUARY 15, 2024

6:30 AM **Registration, Breakfast, and Visit Exhibits**
Grande Ballroom Foyer and Grande Ballroom Salon 1

Grande Ballroom Salon 2-3
Moderator: J. Lindner

7:00 AM **Course Welcome and Orientation**
J. Lindner, S. Mulvagh

7:20 AM **Welcome from ASE President**
B. Eidem

7:30 AM **Key Concepts on the Physiology of Systole**
J. Lindner

7:45 AM **Myocardial Strain Imaging: Where is it Most Impactful?**
A. Hays

8:00 AM **Assessing Ventricular Systole by 3D and Automated Approaches**
D. Phelan

8:15 AM **Echo Enhancing Agents for Left Ventricular Function and More**
S. Mulvagh

8:30 AM **Unique Features for Assessing Right Ventricular Size and Function**
R. Lang

8:45 AM **Nuances of Ventricular Function in the Critically Ill Patient**
S. Mulvagh

9:00 AM **Question & Answer Using the App**
Moderator: J. Lindner
A. Hays, R. Lang, S. Mulvagh, D. Phelan

9:15 AM **Refreshment Break and Visit Exhibits**
Grande Ballroom Salon 1

Grande Ballroom Salon 2-3
Moderator: T. Ryan

9:30 AM **How to Maximize Accuracy When Assessing Valve Regurgitation**
B. Anderson

9:45 AM **3D Assessment of the Cardiac Valves: Learn the Views and Anatomy**
G. Scalia

10:00 AM **Mitral TEER: Decision Making with the Valve Team**
M. Chetrit

10:15 AM **Novel Percutaneous Devices for Mitral Valve Disease**
G. Scalia

10:30 AM **Echo to Predict Impact of Mitral Regurgitation Correction in Heart Failure with Reduced Ejection Fraction and Hypertrophic Cardiomyopathy**
A. DeMaria

10:45 AM **The Brave New World of Tricuspid Interventions: Role of Echocardiography**
J. Thomas

11:00 AM **What Do CT and CMR Add to Echocardiography in Valve Disease Assessment?**
A. Patel

11:15 AM **Integrated Approaches to Assessing Prosthetic Valves**
J. Oh

11:30 AM **My Most Challenging Cases in Mitral and Tricuspid Valve Disease**
B. Anderson, T. Ryan, M. Swaminathan

12:00 PM **Question & Answer Using the App**
Moderator: T. Ryan
B. Anderson, M. Chetrit, A. DeMaria, J. Oh, A. Patel, G. Scalia, M. Swaminathan, J. Thomas

12:15 PM **Adjourn**

4:00 – 5:00 PM **Workshop on Advanced Echo Quantitation: Practical Approaches for Your Lab**
Grande Ballroom Salon 2-3
B. Anderson, B. Gholson, J. Hodovan, J. Oh

5:00 – 6:00 PM **Welcome Reception**
Sponsored by Lantheus Medical Imaging, Inc.
Coconut Grove (beach front location)

TUESDAY, JANUARY 16, 2024

6:30 AM **Registration, Breakfast, and Visit Exhibits**
Grande Ballroom Foyer and Grande Ballroom Salon 1

Grande Ballroom Salon 2-3
Moderator: J. Thomas

7:00 AM **Fascinating Cases from the Experts**
B. Gholson, C. Luong, G. Nesbitt, J. Thomas

8:00 AM **Key Concepts on the Physiology of Diastole**
T. Ryan

8:15 AM **New and Old Diastolic Guidelines: Pride, Prudence, and Pitfalls**
A. DeMaria

8:30 AM **The Diastolic Stress Test: Case-based Instruction**
J. Oh

8:45 AM **Atrial Strain Imaging: Should I? Can I?**
R. Lang

9:00 AM **Challenging Cases in the Assessment of Cardiac Pressures**
A. DeMaria, J. Oh

9:15 AM **Hemodynamic Assessment in Non-Corrected ACHD**
B. Eidem

9:30 AM **Question & Answer Using the App**
Moderator: J. Thomas
A. DeMaria, B. Eidem, R. Lang, J. Oh, T. Ryan

9:45 AM **Refreshment Break and Visit Exhibits**
Grande Ballroom Salon 1

| | |
|---------------------------|--|
| Grande Ballroom Salon 2-3 | |
| <i>Moderator: R. Lang</i> | |
| 10:00 AM | Flow-Function Relationship: Physiology for The Imager <i>J. Lindner</i> |
| 10:15 AM | Stress Echo: How to Go from Good to Great <i>G. Nesbitt</i> |
| 10:30 AM | Assessing Complications of Myocardial Infarction <i>C. Luong</i> |
| 10:45 AM | Microvascular Dysfunction: Pathobiology, Diagnosis, and Treatment <i>A. Hays</i> |
| 11:00 AM | Coronary Artery Anomalies: Case-based Studies in Recognition and Management <i>B. Eidem</i> |
| 11:15 AM | The Great Debate: Suspected Coronary Artery Disease Anatomic Imaging First <i>A. Patel</i> |
| | Functional Imaging First <i>J. Lindner</i> |
| 11:35 AM | Challenging Cases in Ischemic Heart Disease <i>B. Anderson, R. Lang, C. Luong</i> |
| 12:05 PM | Question & Answer Using the App <i>Moderator: R. Lang</i> <i>B. Anderson, B. Eidem, A. Hays, J. Lindner, C. Luong, G. Nesbitt, A. Patel</i> |
| 12:20 PM | Adjourn |
| 12:35 – 2:15 PM | Workshop: Live Learning of Myocardial Perfusion Imaging Grande Ballroom Salon 2-3 <i>B. Gholson, J. Hodovan, J. Lindner, S. Mulvagh</i> |

WEDNESDAY, JANUARY 17, 2024

| | |
|-------------------------------|---|
| 6:30 AM | Registration, Breakfast, and Visit Exhibits Grande Ballroom Foyer and Grande Ballroom Salon 1 |
| Grande Ballroom Salon 2-3 | |
| <i>Moderator: B. Anderson</i> | |
| 7:00 AM | Fascinating Cases from the Experts <i>M. Chetrit, A. DeMaria, S. Mulvagh, M. Swaminathan</i> |
| 8:00 AM | Quantification of Stenosis: Avoid These Pitfalls <i>G. Scalia</i> |
| 8:15 AM | Common and Uncommon Low-Flow Variants of Aortic Stenosis <i>D. Phelan</i> |
| 8:30 AM | Key Components for Echo Evaluation of the TAVR Candidate <i>J. Thomas</i> |
| 8:45 AM | Quantitative Assessment of Aortic Regurgitation <i>A. Hays</i> |
| 9:00 AM | When Percutaneous Procedures Go Bad <i>G. Scalia</i> |
| 9:15 AM | Sitting in With the Heart Valve Team: Cases to Learn From <i>G. Scalia, M. Swaminathan, J. Thomas</i> |

| | |
|----------------------------|---|
| 9:30 AM | Question & Answer Using the App <i>Moderator: D. Phalen</i> <i>A. Hays, G. Scalia, M. Swaminathan, J. Thomas</i> |
| 9:45 AM | Refreshment Break and Visit Exhibits Grande Ballroom Salon 1 |
| Grande Ballroom Salon 2-3 | |
| <i>Moderator: B. Eidem</i> | |
| 10:00 AM | Stress Echo in the Assessment of Valve Disease <i>S. Mulvagh</i> |
| 10:15 AM | A Systematic Approach to Multi-Valve Disease <i>A. DeMaria</i> |
| 10:30 AM | Assessing the Myocardium in Valve Disease: Strain and CMR <i>J. Thomas</i> |
| 10:45 AM | Ultrasound in Nature: What We Have Learned for Clinical Imaging <i>J. Lindner</i> |
| 11:00 AM | Echocardiography Appearance of the Congenital Repairs You Need to Know <i>B. Eidem</i> |
| 11:15 AM | Echocardiography in Endocarditis <i>T. Ryan</i> |
| 11:30 AM | My Most Challenging Cases in Valve Disease <i>J. Oh, M. Swaminathan</i> |
| 12:00 PM | Question & Answer Using the App <i>Moderator: B. Eidem</i> <i>A. DeMaria, J. Lindner, S. Mulvagh, J. Oh, M. Swaminathan, J. Thomas</i> |
| 12:15 PM | Adjourn |
| 4:00 – 5:45 PM | Workshop: Becoming an Expert in 3D Visualization Grande Ballroom Salon 2-3 <i>B. Anderson, M. Chetrit, B. Gholson, J. Hodovan</i> |

THURSDAY, JANUARY 18, 2024

| | |
|------------------------------|---|
| 6:30 AM | Registration, Breakfast, and Visit Exhibits Grande Ballroom Foyer and Grande Ballroom Salon 1 |
| Grande Ballroom Salon 2-3 | |
| <i>Moderator: S. Mulvagh</i> | |
| 7:00 AM | Fascinating Cases from the Experts <i>B. Eidem, J. Hodovan, A. Patel, T. Ryan</i> |
| 8:00 AM | Amyloidosis and Infiltrative Diseases <i>M. Chetrit</i> |
| 8:15 AM | Echocardiography in Systemic Illness: Inflammatory Disease and Vasculitis <i>A. Hays</i> |
| 8:30 AM | Carcinoid and Other Unusual Valve Diseases <i>C. Luong</i> |
| 8:45 AM | Marfan and Other Connective Tissue Diseases: Role of Echocardiography <i>D. Phelan</i> |
| 9:00 AM | Echocardiography in Non-Marfan Aortic Pathology <i>B. Anderson</i> |

| | |
|--|--|
| 9:15 AM | Multimodality Approach to Cardiomyopathies <i>A. Patel</i> |
| 9:30 AM | Question & Answer Using the App <i>Moderator: S. Mulvagh</i> <i>B. Anderson, M. Chetrit, A. Hays, C. Luong, A. Patel, D. Phelan</i> |
| 9:45 AM | Refreshment Break and Visit Exhibits Grande Ballroom Salon 1 |
| Grande Ballroom Salon 2-3 <i>Moderator: G. Scalia</i> | |
| 10:00 AM | Pericardial Constriction: Evaluation and Guiding Management <i>J. Oh</i> |
| 10:15 AM | Echocardiography in Decision Making for HCM <i>J. Thomas</i> |
| 10:30 AM | Stress Echocardiography for Hypertrophic Cardiomyopathy and Other Inherited Myopathies <i>G. Nesbitt</i> |
| 10:45 AM | Echocardiography Assessment of LVADs and ECMO: What We All Need to Know <i>G. Scalia</i> |
| 11:00 AM | Cardio-Oncology and the Role of Echocardiography <i>A. Hays</i> |
| 11:15 AM | Precision Imaging for Precision Medicine: Top 5 Examples <i>T. Ryan</i> |
| 11:30 AM | My Most Challenging Cases in Cardiomyopathies <i>R. Lang, J. Oh, D. Phelan</i> |
| 12:00 PM | Question & Answer Using the App <i>Moderator: G. Scalia</i> <i>A. Hays, R. Lang, G. Nesbitt, J. Oh, D. Phelan, T. Ryan, J. Thomas</i> |
| 12:15 PM | Adjourn |
| 12:30 – 2:15 PM | Workshop: Using Echo to Guide Drug Therapy Grande Ballroom Salon 2-3 <i>B. Gholson, A. Hays, G. Nesbitt, J. Thomas</i> |

FRIDAY, JANUARY 19, 2024

| | |
|---|--|
| 6:30 AM | Registration, Breakfast, and Visit Exhibits Grande Ballroom Foyer and Grande Ballroom Salon 1 |
| Grande Ballroom Salon 2-3 <i>Moderator: A. DeMaria</i> | |
| 7:00 AM | Fascinating Cases from the Experts <i>C. Luong, J. Oh, A. Patel, J. Thomas</i> |
| 8:00 AM | Cardiac Masses: A Comprehensive Approach <i>D. Phelan</i> |
| 8:15 AM | Pericardial Effusions: Not So Straightforward Situations <i>A. DeMaria</i> |
| 8:30 AM | Echocardiography in Pregnancy: What's Normal, What's Not <i>S. Mulvagh</i> |
| 8:45 AM | Pulmonary Hypertension <i>B. Anderson</i> |
| 9:00 AM | Cardiovascular Implantable Electronic Devices (CIED) Interference with TV Function: Evaluation by 3D Electrocardiography <i>R. Lang</i> |
| 9:15 AM | Artifacts Nearly Did Me In <i>C. Luong</i> |
| 9:30 AM | Question & Answer Using the App <i>Moderator: A. DeMaria</i> <i>B. Anderson, R. Lang, C. Luong, S. Mulvagh, A. Patel, D. Phelan</i> |
| 9:45 AM | Refreshment Break and Visit Exhibits Grande Ballroom Salon 1 |
| Grande Ballroom Salon 1 <i>Moderator: J. Lindner</i> | |
| 10:00 AM | Athletes Heart or Pathology? <i>D. Phelan</i> |
| 10:15 AM | Diabetes and Metabolic Myopathies <i>A. Hays</i> |
| 10:30 AM | Congenital Cases to Learn From <i>B. Eidem</i> |
| 10:45 AM | TEE in Emergencies and Urgencies <i>M. Swaminathan</i> |
| 11:00 AM | Artificial Intelligence in Echo: It's Already Happening <i>M. Swaminathan</i> |
| 11:15 AM | Question & Answer Using the App <i>Moderator: J. Lindner</i> <i>B. Eidem, A. Hays, D. Phelan, T. Ryan, M. Swaminathan</i> |
| 11:30 AM | Mai Tai Session and Aloha until 2025 <i>J. Lindner, S. Mulvagh</i> |
| 12:00 PM | Adjourn |

Faculty Disclosure

The following faculty members do not have any relationships with industry/commercial supporters to disclose:

Bonita Anderson, M.APPL.SC (Med Ultrasound), DMU(Cardiac), AMS, ACS, FASE

Benjamin Eidem, MD, FASE

Allison G. Hays, MD, FASE

James Hodovan, PhD, RDCS

Christina Luong, BSc, MD, MHSc, FASE

Thomas Ryan, MD, FASE

The following faculty members do have financial relationships with industry/commercial supporters to disclose:

Michael Chetrit, MD; Pfizer (Consultant/Advisor, Research Funding/Support, Speaker/Speaker's Bureau); Alnylam, Bristol Myers Squibb (Consultant/Advisor); Abbott (Speaker/Speaker's Bureau)

Anthony DeMaria, MD, FASE; Bracco (Speaker/Speaker's Bureau); Hitachi/Aloka (Research Support/Funding)

Bethany Gholson, BS, RCS; Global Institute for Research (GIR) (Consultant/Advisor)

Roberto Lang, MD, FASE; Philips Healthcare, TOMTEC (Consultant/Advisor); Ultrasight (Research Funding)

Jonathan R. Lindner, MD, FASE; GE Healthcare, Lantheus Imaging, NASA, NIH (Research Funding/Support); BioMarin Pharma, Lantheus Medical Imaging, Cytokinetics, NovaPulse, Vibrato Inc. (Consultant/Advisor)

Gillan Nesbitt, MD, FASE; Bristol Myers Squibb (Speaker/Speaker's Bureau)

Sharon L. Mulvagh, MD FRCP FASE FACC FAHA; Lantheus, Novo Nordisk (Consultant/Advisor)

Jae K. Oh, MD, Samsung Professor of Cardiology; Anuman (Royalties/Patent Beneficiary); Medtronic (Consultant/Advisor); Rednvia (Research Support/Funding)

Amit Patel, MD; GE Healthcare, CircleCVI, Neosoft, Siemens Healthineers (Research Funding/Support); GE Healthcare (Speaker/Speaker's Bureau)

Dermot Phelan, MD, PhD, FASE; Bristol Myers Squibb (Speaker/Speaker's Bureau); Caption Health (Consultant/Advisor)

Gregory Scalia, MBBS FASE; Abbott, Edwards, GE Healthcare, Philips (Speaker/Speaker's Bureau)

Madhav Swaminathan, MD, FASE; US2.AI (Consultant/Advisor)

James D. Thomas, MD, FASE; Abbott, Caption Health, egnite, GE Healthcare, EcchIQ (Consultant/Advisor)

The following members of the ASE CME Committee (not serving as faculty) do not have any relationships with industry/commercial supporters to disclose:

Mary Corretti, MD, FASE – Chair

Bruce Landeck, II, MD, FASE – Co-Chair

Kelly Boegel, ACS, RCCS, RCS, FASE – Member at Large

Michael Boisen, MD, FASE – Member at Large

Mahesh Chandrasekhar, MD – Rising Star Representative

Kristie Faust-Gomez, BS, ACS, RDCS, RVT, RT(R), FASE – Member at Large

Loren Francis, MD, FASE – Perioperative Representative

Ihab Hamzeh, MD, FASE – Member at Large

Carlton Hartwell, ACS, RDCS, FASE – Member at Large

Jiapeng Huang, MD, PhD, FASA, FASE – Member at Large

James Iwaz, MD, FASE – Member at Large

Eric Kallstrom, MBA, ACS, FASE, FAIUM, FACC – Sonographer Representative

Michelle Klein-Neville, BS, ACS, RDCS, FASE – Member at Large

Michael Lanspa, MD, FASE – Critical Care Representative

Elizabeth Le, MD, FASE – Member at Large

Peace Madueme, MD, MS, FASE – Pediatric Representative

Laura Mercer-Rosa, MD, MSCE, FASE – Member at Large

Mohamed Morsy, MD, FASE – Vascular Representative

Ambika Nayar, MD, FASE – Member at Large

Roosha Parikh, MD, FASE – Member at Large

Tracy Ralston, RDCS, FASE – Member at Large

Nidhish Tiwari, MD, FASE, FACC, FACP – Member at Large

All members of the ASE staff who were involved in the planning and implementation of this activity do not have any relationships with industry/commercial supporters to disclose:

Liz Foster, Online Educational Activities Director

Christina LaFuria, Vice President of Educational Activities

Jaclyn Levine, CMP, Senior Director of Meetings

Robin Wiegerink, MNPL, Chief Executive Officer

Exhibitor Information

Exhibit Location and Hours

Exhibits are located in the Grande Ballroom Salon 1 during the dates and hours listed below.

| | |
|-----------------------------|--------------------|
| Monday, January 15 | 6:30 AM – 12:15 PM |
| Tuesday, January 16 | 6:30 AM – 12:20 PM |
| Wednesday, January 17 | 6:30 AM – 12:15 PM |
| Thursday, January 18..... | 6:30 AM – 12:15 PM |
| Friday, January 19 | 6:30 – 10:00 AM |

Exhibitor Descriptions

Anylam
300 Third Street
Cambridge, MA 02142
United States
503-507-6128
Anylam.com
Amvutra.com



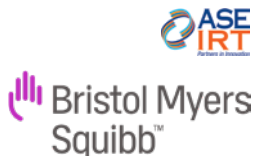
Since its founding, Anylam has led the translation of RNA interference (RNAi) into a new class of approved and investigational medicines for rare genetic, cardio-metabolic, hepatic infectious, and central nervous system (CNS)/ocular diseases. Based on Nobel Prize-winning science, RNAi therapeutics are a clinically validated approach for the treatment of rare diseases with unmet medical need and prevalent diseases. Anylam is headquartered in Cambridge, MA. For more information, please visit Anylam.com.

Bracco Diagnostics, Inc.
259 Prospects Plains Road, Building H
Monroe Township, NJ 08831
United States
609-514-2200
Bracco.com/en-us/We-Are-Bracco



Bracco Imaging offers products and solutions for all key diagnostic imaging modalities: X-ray (including Computed Tomography, Interventional Radiology, and Cardiac Catheterization), Magnetic Resonance Imaging, Contrast Enhanced Ultrasound, and Nuclear Medicine through radioactive tracers. This portfolio is complimented by a range of medical devices and advanced administration systems.

Bristol Myers Squibb
3401 Princeton Pike
Lawrenceville, NJ 08548
United States
800-332-2056
BMS.com



Bristol Myers Squibb is a leading global biopharma company focused on discovering, developing and delivering innovative medicines for patients with serious diseases in areas including oncology, hematology, immunology, cardiovascular, fibrosis and neuroscience.

Freeland Systems
550 Congressional Boulevard
Suite 115
Carmel, IN 46032
United States
888-615-1888
FreelandSystems.com



A versatile cardiology PACS system, available both in cloud and local setups, equipped with enterprise-level imaging features and advanced reporting tools. This system is capable of integrating with various third-party software, ensuring adaptability with new technological innovations.

GE HealthCare
251 Locke Drive
Marlborough, MA 01752
United States
866-281-7545
GE.com



GE HealthCare is a leading global medical technology, pharmaceutical diagnostics, and digital solutions innovator dedicated to providing integrated solutions to make hospitals more efficient, clinicians more effective, therapies more precise, and patients healthier. Learn more at GEHealthCare.com.

Kosmos by EchoNous
8310 154th Avenue NE Building B
Suite 200
Redmond, WA 98052
United States
844-854-0800
EchoNous.com
EchoNous.com/Product/Kosmos-Ultratable-Ultrasound



EchoNous is the only one to offer top-tier image quality + AI fueled interpretations and cutting-edge innovations at the point-of-care. With cart benchmarked quality and advanced feature sets, Kosmos ultratable ultrasound is giving physicians a higher level of confidence in their bedside diagnosis. Kosmos plus Kosmos AI is both intuitive and instructional, guiding clinicians to acquire correct image orientations and provide complex cardiac analysis in just seconds.

Lantheus
331 Treble Cove Road
Billerica, MA 01862
United States
800-362-2668
Lantheus.com



With more than 65 years of experience in delivering life-changing science, Lantheus is committed to improving patient outcomes through diagnostics, radiotherapeutics and artificial intelligence solutions that enable clinicians to Find, Fight and Follow disease to deliver better patient outcomes. For more information, visit Lantheus.com.

narnar
13424 Auburn Court
Lake Oswego, OR 97035
United States
503-442-9273
narnar.co

narnar

Software for contrast echo.

National Board of Echocardiography
3915 Beryl Road
Raleigh, NC 27607
United States
919-861-5582
EchoBoards.org



The National Board of Echocardiography, Inc. is a physician, volunteer-led not-for-profit corporation. Established in 1996 to develop and administer examinations in the field of Clinical Echocardiography. A board certification process has been developed to publicly recognize Diplomates of the National Board of Echocardiography. The following examinations are administered by the NBE: ASCeXAM®, Advanced PTEeXAM®, Basic PTE®, and CCEeXAM®. Visit our booth for a chance to win an exam!

Pfizer
66 Hudson Boulevard East
New York, NY 10001-2192
United States
800-879-3477
PfizerPro.com
Vyndamax.PfizerPro.com



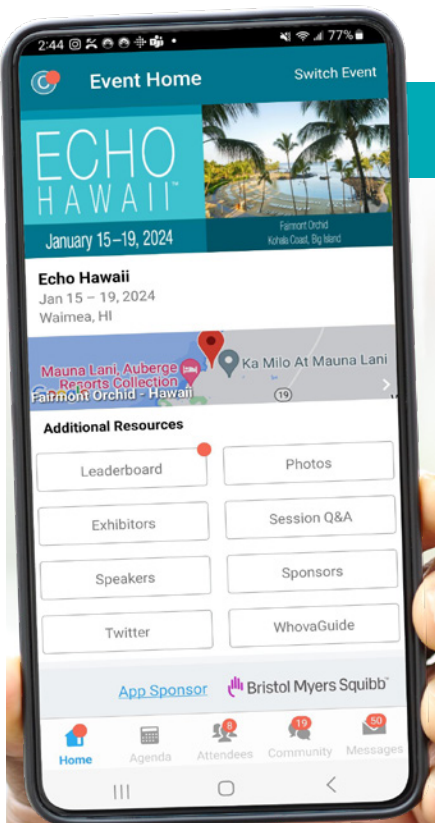
Our mission is to become the world's most valued company to patients, customers, colleagues, investors, business partners and the communities where we work and live.

Philips
222 Jacobs Street
Cambridge, MA 02141
United States
617-245-5900
Philips.com
USA.Philips.com/Healthcare/Solutions/Ultrasound/
Cardiovascular-Ultrasound



PHILIPS

At Philips, our purpose is to improve people's health and well-being through meaningful innovation. We aim to improve 2.5 billion lives per year by 2030, including 400 million in underserved communities. As a technology company, we – and our brand licensees – innovate for people with one consistent belief: there's always a way to make life better.



Download Whova, ASE's New Live Course App

ASE is using the online platform Whova as its new live courses app. Whova will give you access to the entire meeting program at your fingertips. You can also use the app to ask questions during the sessions you attend. Search "Whova" in the Google Play and Apple Stores to download.

Whova allows for more interaction among participants at the meeting including:

- Finding others who are attending Echo Hawaii and reaching out to them at any time.
- Planning social activities such as a morning run, coffee hours, or meet-ups with your fellow attendees.

Important course information like:

- The event agenda and planning your personal schedule.
- Access to documents and slides shared by organizers or speakers.
- Updates like possible last minute session changes from the organizers.

If you have already used the Whova app, just double-check what is installed on your phone, tablet, or computer, and log in using your existing account email and password.

First Time Whova User?

MOBILE APP

After downloading Whova, you will be prompted to create an account. We suggest that you use the email address you used when registering for Echo Hawaii and create a strong password. By using the email address you used when registering for Echo Hawaii, the platform will automatically associate you with the event and take you to your event page automatically.

WEB PORTAL

Simply use the web portal link https://whova.com/portal/webapp/echof1_202310/. Login using the same email and password as your mobile device.

If you are not automatically connected to the event and you are prompted for an event code, please reference the email you were sent on Monday, January 8, from Christina LaFuria at "event-noreply@whova.io" or visit the registration desk outside the Grande Ballroom.

ECHO HAWAII™

33rd ANNUAL

ASE would like to thank our Industry Roundtable Partners



Connect with ASE

Join the conversation by using #EchoHawaii

 [Facebook.com/ASEcho](https://www.facebook.com/ASEcho)

 [@ASE360](https://twitter.com/ASE360)

 [American Society of Echocardiography](https://www.linkedin.com/company/american-society-of-echocardiography)

 [@ASE360](https://www.instagram.com/ASE360)

 [Connect.ASEcho.org](https://connect.asecho.org)

 [ASE360](https://www.youtube.com/ASE360)

[#EchoHawaii](https://twitter.com/ASE360)



2530 Meridian Parkway

Suite 450

Durham, NC 27713 USA

Phone: 1-919-861-5574

[ASEcho.org](https://www.asecho.org)

[ASEFoundation.org](https://www.asefoundation.org)