

# ECHO HAWAII™

# 34th ANNUAL

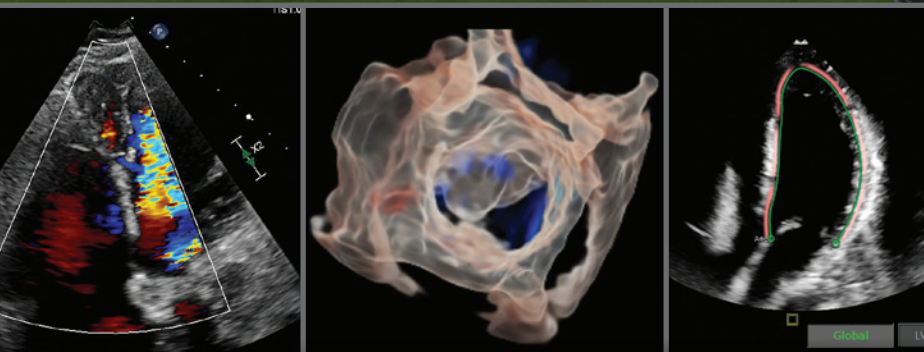


## FINAL PROGRAM

**January 20 – 23, 2025**

Fairmont Orchid  
Kohala Coast, Big Island, HI

**Course Director**  
**Stephen Little, MD, FASE**  
Past President, ASE  
Houston Methodist Hospital  
Houston, TX



Jointly provided by the American Society of Echocardiography and the ASE Foundation, and held in cooperation with the Canadian Society of Echocardiography and the Asian-Pacific Association of Echocardiography.

# Welcome Message and Faculty

## Welcome Message

On behalf of the American Society of Echocardiography (ASE), welcome to the Big Island! Whether you are a regular attendee or a first-time visitor, we are certain you will enjoy the experience and come away with new knowledge and skills that will enhance your ability to care for your patients.

Although we are eagerly anticipating the upcoming event, it is important to take a moment to reflect on the recent passing of Dr. Jim Kirkpatrick. Jim was an integral part of shaping this year's agenda, and it was a privilege to work closely with him throughout this process. His passion for advancing education, particularly in the TEE and POCUS workshops, was truly inspiring. We are committed to ensuring that Jim's contributions and professional legacy are honored throughout this meeting, as a testament to his enduring impact on our community.

This year we have the special opportunity to collaborate with the Asian-Pacific Association of Echocardiography and the Canadian Society of Echocardiography. The meeting will focus on state-of-the-art echocardiography and how it is applied to clinical decision-making. The faculty at Echo Hawaii are world-renowned not only for their clinical expertise but also for their teaching prowess. We will start each day early and pack every morning with lectures, cases, and plenty of interactive sessions. In the afternoons from Monday to Wednesday, you will have the opportunity to attend case-based workshops. Workshop topics include tips and tricks for optimizing TEE, a unique look at echo from the Pacific Rim, and the CSE-hosted workshop focusing on Cardiac POCUS.

What makes Echo Hawaii truly special is the unique blend of world-class education and the relaxed, welcoming atmosphere that fosters meaningful connections. This event offers a rare opportunity to learn from leading experts in cardiovascular imaging while enjoying informal interactions in a stunning setting. Whether you're sharing insights by the pool, swapping stories over a Mai Tai at the Luana Lounge, or catching waves alongside faculty members, these moments build a sense of community that sets this meeting apart. Be sure to join us at the Aloha Welcome Reception on Monday evening, featuring local cuisine, drinks, and live music—a perfect way to break the ice and kick off the week in true island style.

Back this year is our Science at Sunset poster reception. We have over 20 abstracts that will be presented while attendees mingle with the researchers and faculty. So, grab a beverage and join us at sunset on Tuesday.

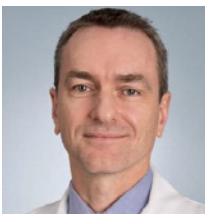
Echo Hawaii offers more than just education—it's an opportunity to learn and grow in a truly unique setting. Take time to explore your surroundings and make the most of this incredible destination. The Big Island offers a wealth of activities, from relaxing at world-class spas and enjoying scenic golf courses to experiencing Hawaii's rich marine life through snorkeling or scuba diving. For those looking to venture further, the island is home to stunning hikes that traverse diverse landscapes, including lush forests and volcanic terrains.

If you're seeking a truly memorable adventure, consider visiting Mauna Kea. At over 14,000 feet, the summit offers breathtaking stargazing opportunities unlike anywhere else. Keep in mind that temperatures can drop significantly at this altitude, so dress accordingly.

On the Kohala Coast, you'll enjoy sunshine almost year-round with average temperatures of 78-80 degrees Fahrenheit in January. The area offers a variety of world-class restaurants, both on the property and nearby, catering to all budgets and tastes.

Thank you for joining us at Echo Hawaii 2025! We hope this unique blend of education and island culture inspires you both personally and professionally. Your engagement makes this event truly special, and we look forward to learning and connecting with you throughout the week.

Aloha and Mahalo!



Course Director  
**Stephen Little, MD, FASE**  
Past President, ASE  
Houston Methodist Hospital  
Houston, TX

## Faculty

### **Theodore Abraham, MD, FASE**

ASE President  
University of California, San Francisco  
San Francisco, CA

### **Federico Asch, MD, FASE**

MedStar Health Research Institute  
Columbia, MD

### **Gerard Aurigemma, MD, FASE**

UMass Memorial Medical Center  
Worcester, MA

### **Ana Barac, MD, PhD**

INOVA Heart and Vascular Institute  
Annadale, VA

### **Natalie Edwards, ACS, AMS, FASE, PhD**

The Prince Charles Hospital  
Brisbane, Queensland

### **Jerry Estep, MD, FASE**

Cleveland Clinic  
Cleveland, OH

### **Nadeen Faza, MD, FASE**

Houston Methodist  
Houston, TX

### **Nowell Find, MD, MS, FRCPC, FASE**

University of Calgary  
Calgary, Alberta, Canada

### **Rebecca Hahn, MD, FASE**

Columbia University Medical Center  
New York, NY

### **Julie Humphries, MBBS, FASE**

The Prince Charles Hospital  
Brisbane, Queensland

### **Roberto Lang, MD, FASE**

University of Chicago Medical Center  
Chicago, IL

### **Alex Lee, MD**

Prince of Wales Hospital  
Hong Kong, China

### **Jose Donato Magno, MD, FPSE, FASE**

Philippine General Hospital  
Manila, Philippines

### **Jae Oh, MD, FASE**

Mayo Clinic  
Rochester, MN

### **Hiroyuki Okura, MD**

Gifu University Graduate School of Medicine  
Yanagido, Gifu City, Japan

### **Geraldine Ong, MD**

St. Michael's Hospital  
Toronto, Canada

### **Dermot Phelan, MD, PhD, FASE**

Sanger Heart and Vascular Institute – Atrium Health  
Charlotte, NC

### **Gregory Scalia, MBBS, FASE**

Prince Charles Hospital  
Brisbane, Queensland

### **Jae-Kwan Song, MD**

Asan Medical Center  
Seoul, South Korea

### **Teresa Tsang, MD, FRCPC, FASE**

University of British Columbia  
Vancouver, British Columbia, Canada

### **Edwin Tucay, MD, FPSE, FASE**

Philippine Heart Center  
Central, Quezon City, Philippines

### **Cathy West, MSc, AMS, FASE**

Royal Brisbane and Women's Hospital  
Brisbane, Australia

## Overview of Echo Hawaii

Echo Hawaii is one of ASE's premier educational programs. Attendees receive in-depth, case-based learning on established and emerging cardiovascular ultrasound technologies in a beautiful and relaxed environment. Particular focus is placed on the application of advanced cardiovascular imaging technologies in the clinical setting. The program is structured to allow attendees to closely interact on a personal level with internationally recognized leaders in echocardiography, including special sessions on clinical dilemmas and technology-based workshops.

Program content includes state-of-the-art methods for evaluating ventricular systolic and diastolic function, valve function, pericardial disease, ischemic heart disease, critical care echo, and use of TEE. Content also includes cutting edge information on the assessment and guidance of cardiac devices, integration of echo in patients with cardiomyopathies, contrast ultrasound for cavity opacification and perfusion, strain echocardiography, and 3D imaging.

## Who Should Attend

This course is designed for adult cardiologists, critical care specialists, cardiovascular surgeons, cardiovascular anesthesiologists, fellows in training, cardiovascular sonographers, internists, veterinarians, and intensive care specialists with special interest in echocardiography.

## Learning Objectives

Upon completion of this program, participants will be better able to:

- Integrate echocardiographic information in clinical decision making.
- Incorporate transesophageal echo to guide structural heart procedures.
- Assess ventricular and valvular function using advanced technologies and Doppler hemodynamics.
- Describe Doppler assessment of diastolic function/dysfunction.
- Explain new advances in the echocardiographic assessment of left and right ventricular function.
- Integrate echocardiographic assessment of cardiomyopathies and systemic diseases in patient management.
- Define clinical uses of TEE and 3D echocardiography.
- Recognize how echocardiography is used to help manage patients with ischemic heart disease.
- Recognize the role of echo contrast and be able to incorporate its use in the echo laboratory.
- Integrate echo information in the management of complex valvular heart disease.
- Explain the role of echocardiography in the perioperative and critical care environment.
- Explain how management for heart failure can be guided by echocardiography.
- Recognize emerging applications such as myocardial perfusion imaging, artificial intelligence, etc.
- Manage patients according to new guideline documents.
- Understand the role of echocardiography in aortic disease.

# Program Information

## Disclaimer

The information provided during this CME activity is for continuing education purposes only and is not meant to substitute for the independent medical judgment of a healthcare provider relative to diagnostic and treatment options of a specific patient's condition.

## Accreditation and Designation

ASE is accredited by the Accreditation Council for Continuing Medical Education (ACCME) to provide accredited continuing education for physicians.

ASE designates this live course for a maximum of **25.0 AMA PRA Category 1 Credits™**. To claim all 25.0 CME credits, you must attend all afternoon workshops.

In addition to offering CME credits, this activity has been developed and registered with ACCME to provide **MOC, MOC Part 2, and MOCA 2.0 points** in alignment with *AMA PRA Category 1 Credit™*.

Successful completion of this CME activity enables the participant to earn up to 25.0 MOC points in the American Board of Internal Medicine's (ABIM) Maintenance of Certification (MOC) program, the American Board of Pediatrics (ABP) MOC program, and/or the American Board of Anesthesiology's (ABA) Maintenance of Certification in Anesthesiology Program® or MOCA 2.0®. It is ASE's responsibility to submit participant completion information to ACCME for the purpose of granting ABIM and ABP MOC points and/or ABA MOCA 2.0®.

Participants should claim only the credit commensurate with the extent of their participation in the activity. Physicians will earn MOC and/or MOCA 2.0 points equivalent to the amount of CME credits claimed for the activity.

ARDMS, CCI, and Sonography Canada recognize ASE's certificates and have agreed to honor up to 25 CME credit hours toward their registry requirements for sonographers.

PAs may claim a maximum of 25.0 Category 1 credits for completing this activity. NCCPA accepts AMA PRA Category 1 Credit™ from organizations accredited by ACCME or a recognized state medical society.

ASE's 33rd Annual Echo Hawaii has been reviewed by the British Society of Echocardiography and is approved for BSE Points.



*Maintenance of Certification in Anesthesiology Program® and MOCA® are registered certification marks of the American Board of Anesthesiology®. MOCA 2.0® is a trademark of the American Board of Anesthesiology®.*

## Daily Breakdown of CME/MOC Credits:

Monday, January 20, 2025 = 6.25 hours

Tuesday, January 21, 2025 = 7.75 hours

Wednesday, January 22, 2025 = 6.25 hours

Thursday, January 23, 2025 = 4.75 hours

## Disclosure

ASE is committed to ensuring that its educational mission, and all accredited continuing educational programs provide a protected space to learn, teach, and engage in scientific discourse free from influence from organizations that may have an incentive to insert commercial bias into education.

While a monetary or professional affiliation with an ineligible company does not necessarily influence a speaker's presentation, the Standards for Integrity and Independence in Accredited Continuing Education and policies of the ACCME require that all financial relationships with ineligible companies be identified and mitigated prior to engaging in an accredited CE activity. In accordance with these policies, ASE actively identified relevant financial relationships between faculty in control of this accredited CE activity and ineligible companies, and implemented mitigation strategies to eliminate any potential influence from persons or organizations that may have an incentive to insert commercial bias in this activity. Disclosure information is referenced and can be found on page 10 of this program.

## Commercial Support Disclosure Statement

**Educational Grants:** This accredited CE activity is supported in part by unrestricted educational grants from BridgeBio, Edwards Lifesciences, Lantheus, and Medtronic.

## How to Claim CME/MOC

To claim your CME for Echo Hawaii, please follow the steps below using your Mozilla Firefox, Google Chrome, or Safari browser. Internet Explorer will not work. The deadline to claim credit is **January 23, 2026**.

### How to claim your CME credits:

An email will be sent to you on Thursday, January 23 at 3:00 PM ET with instructions on how to complete the evaluation and claim your CME credits. Be sure to enter your specialty board number (ABIM, ABA, ABP, ARDMS, CCI) in order for your credits to be transferred.



# Attendee Information & Regulations

## Registration Location and Hours

The ASE Registration desk is located outside the Grande Ballroom. **ASE strongly recommends that you visit the registration desk on Sunday, January 19, to ensure no sessions are missed Monday morning.** ASE staff will be happy to renew your ASE membership or discuss the wide variety of educational products that are available for a discount during the course. The Registration desk will be staffed during the following hours:

Sunday, January 19 . . . . . 4:00 PM – 6:00 PM

Monday, January 20, through Thursday, January 23, the registration desk will be open during all session hours.

## Food Functions

ASE will provide breakfast and morning coffee breaks for registered attendees in Grande Plaza Ballroom & Foyer Ballroom Courtyard from 6:30 AM until the start of the session each morning.

Please refer to the program schedule for the times of the daily coffee breaks. The Fairmont Orchid offers guests a variety of dining options. Please see below for more details.

## Welcome Reception

ASE cordially invites you and your guests to the 34<sup>th</sup> Annual Echo Hawaii Welcome Reception on Monday evening, January 20, 5:30 – 7:00 PM in the Coconut Grove. The casual reception includes Hawaiian hors d'oeuvres, beverages, and local music. We look forward to welcoming you to paradise and providing you the perfect opportunity to meet faculty, friends, and colleagues.

## Internet Access

Attendees of the course receive complimentary internet in their guest rooms at the Fairmont Orchid. There is WiFi access in the meeting room.

Username: ASE2025

Password: EchoHawaii

## Business Center

The Business Center is located in the Convention Center and is open daily. It offers fax, photo-copier, mail, and computer services.

## Safety

Audience seating is on a first-come, first-served basis. According to fire code, a session must be closed if the room fills to capacity. Inappropriate behavior or undesirable conduct, including, but not limited to, verbal or physical abuse, whether threatened or performed, will not be permitted or tolerated. You must wear your name badge at all times when attending the sessions.

## Photography/AV Policy

No person may record any portion of the 34<sup>th</sup> Annual Echo Hawaii, either by video, still or digital photography, audio or any other recording or reproduction mechanism. This includes recording of presentations and supporting audio visual materials and of poster presentations and supporting poster materials.

Taking photos of, or recording the content of, presentation slides is also prohibited and is considered intellectual piracy. Attendees who ignore this policy will be asked to leave the educational session and are at risk of losing their name badge and attendance privileges. Photographs taken for the purpose of sharing on social media is allowed, but should avoid showing presentation slides. Please use **#EchoHawaii** when posting on social media.

ASE reserves the rights to all recordings or reproductions at ASE meetings. Please be aware that during the 34<sup>th</sup> Annual Echo Hawaii, attendees, vendors, guests and exhibitors may be photographed or videotaped by ASE staff capturing the event. Some of these photographs or videos may be displayed by ASE in future publications or other materials. By virtue of your attendance, you agree to allow ASE to use photographs of you in its promotional materials.

## Mobile Device Use

We encourage you to use your mobile device to download Whova, the new app ASE is using for live courses. Whova will give you access to the entire meeting program at your fingertips. You can also use the app to ask questions during the sessions you attend. Search "Whova" in the Google Play and Apple Stores to download. For more details on the Whova app and using it at Echo Hawaii, see page 9. **Please remember to turn your mobile device to silent or vibrate mode.**

# Schedule of Events

## SUNDAY, JANUARY 19, 2025

4:00 – **Registration**  
6:00 PM Grande Ballroom Foyer

## MONDAY, JANUARY 20, 2025

6:30 AM **Registration, Breakfast, and Visit Exhibits**  
Grande Ballroom Foyer and Grande Ballroom Salon 1

### Foundations: Motion and Mechanics

Grande Ballroom Salon 2-3  
*Moderators: T. Abraham, N. Edwards*

7:00 AM **Course Welcome and Orientation**  
*S. Little*

7:10 AM **Welcome From the ASE President**  
*T. Abraham*

7:20 AM **Physiology of Systole: What Imagers Need to Know**  
*G. Aurigemma*

7:30 AM **Integration of Myocardial Strain Imaging into Clinical Care**  
*E. Tucay*

7:40 AM **Stress Imaging for Coronary Ischemia in 2025**  
*H. Okura*

7:50 AM **Case: LVEF With RWMA/LBBB**  
*N. Edwards*

8:00 AM **Case: Strain Imaging Concordant/Discordant with Visual EF**  
*J. Donato Magno*

8:10 AM **Assessment of RV Size and Function**  
*F. Asch*

8:20 AM **Evaluation of Right Sided Pressures (Hepatic, RA, RVSP, PA Diastolic) Even Without TR**  
*J. Donato Magno*

8:30 AM **Discussion of RV Functional Reserve: Can We Predict Post-Intervention RV Recovery?**  
*T. Abraham*

8:40 AM **Case: RV Evaluation in The Setting of Severe TR**  
*E. Tucay*

8:50 AM **Case: RV Recovery After Left Heart Surgery**  
*H. Okura*

9:00 AM **New “WASE” to Understand Normal Values**  
*F. Asch*

9:10 AM **Tropical Bird’s Eye View of Valvular Heart Disease**  
*S. Little*

9:20 AM **Tribute to Jim Kirkpatrick**  
*S. Little, R. Lang*

9:30 AM **Refreshment Break and Visit Exhibits**  
Grande Ballroom Salon 1

### Diastolic Function: Oh Relax, Jae’s Got This!

Grande Ballroom Salon 2-3  
*Moderators: N. Faza, J. Oh*

9:50 AM **Ventricular Diastolic Function — Normal Physiology and The Stages of Dysfunction**  
*N. Edwards*

10:00 AM **A Guideline Approach to Evaluation of Diastolic Function: Make It Easy!**  
*J. Oh*

10:10 AM **RV and Atrial Diastolic Function: How and Why to Evaluate**  
*T. Tsang*

10:20 AM **Case: Simple Diastolic Function with Age Changes**  
*E. Tucay*

10:30 AM **Case: Tough Cases with Arrhythmia**  
*N. Faza*

10:40 AM **Pericardial Dysfunction: How to Risk Stratify an Effusion and Recognize Constriction**  
*G. Aurigemma*

10:50 AM **Step By Step Guide to Echo-Guided Pericardiocentesis: What a Drain**  
*G. Scalia*

11:00 AM **Ventricular Septal Motion: Post Op; BBB; Or Constriction - Making Sense of The Wiggle**  
*J. Song*

11:20 AM **Case: Small/Moderate Post Op Effusion — Tamponade?**  
*N. Edwards*

11:30 AM **Case: Evaluating Pericardial Effusion in PHTN — Unique Considerations and Cautions**  
*D. Phelan*

11:40 AM **Getting Tricky Diastolic Function with Transplant or LVAD Support**  
*J. Estep*

11:50 AM **A Potpourri of Diastolic Dysfunction: 5 Cases/5 Answers**  
*G. Ong*

12:00 PM **The Athletic Heart: Prove It!**  
*D. Phelan*

12:10 PM **Case: Pro Athlete LVH — Diastolic Function**  
*D. Phelan*

12:20 PM **Case: Evaluation of Diastolic Function with MAC**  
*J. Donato Magno*

4:00 – **Master Workshop: Tips and Tricks to Optimize TEE; Take it to the Next Level**  
5:00 PM Grande Ballroom Salon 2-3  
*Presenters: R. Hahn, R. Lang, G. Scalia*  
*Panelist: G. Aurigemma, T. Tsang, E. Tucay*

5:30 – **Welcome Reception**  
7:00 PM Coconut Grove (beach front location)

## TUESDAY, JANUARY 21, 2025

6:30 AM **Registration, Breakfast, and Visit Exhibits**  
Grande Ballroom Foyer and Grande Ballroom Salon 1

### Chords, Cusps, and Quantitation: Welcome to Valve Island

Grande Ballroom Salon 2-3  
*Moderator: R. Hahn, S. Little*

7:00 AM **Best Practices to Identify AS Severity**  
*S. Little*

7:10 AM	<b>The Challenge of AR. Mechanism and Consequences</b> <i>N. Faza</i>
7:20 AM	<b>Guidance and Evaluation of TAVR</b> <i>J. Song</i>
7:30 AM	<b>Case: Low Flow Low Gradient AS</b> <i>S. Little</i>
7:40 AM	<b>Case: Symptomatic Moderate AS — Now What?</b> <i>G. Ong</i>
7:50 AM	<b>MR Quantification — Does It Depend of Mechanism?</b> <i>A. Lee</i>
8:00 AM	<b>Patient Selection for MV — TEER. The Appropriate Referral</b> <i>N. Faza</i>
8:10 AM	<b>How to Perform MV-TEER</b> <i>G. Scalia</i>
8:20 AM	<b>Case: Approach to M-TEER in The Small MVA</b> <i>N. Faza</i>
8:30 AM	<b>Case: Approach to Barlows M-TEER — Lessons Learned</b> <i>S. Little</i>
8:40 AM	<b>Contemporary Mitral Stenosis. When Calcium Attacks!</b> <i>H. Okura</i>
8:50 AM	<b>What's New in 3D for Valvular Heart Disease</b> <i>R. Lang</i>
9:00 AM	<b>When to Stress (Echo) About VHD</b> <i>R. Tsang</i>
9:10 AM	<b>Case: AS With MR-Quantification and Treatment Priorities?</b> <i>J. Humphries</i>
9:20 AM	<b>Case: CMR Confirms MR Quantification</b> <i>N. Fine</i>
9:30 AM	<b>Refreshment Break and Visit Exhibits</b> Grande Ballroom Salon 1
9:50 AM	<b>Prosthetic Valve Dysfunction</b> <i>G. Aurigemma</i>
10:00 AM	<b>Pulmonary Vein Flow and Prognostication: What Have We Learned?</b> <i>F. Asch</i>
10:10 AM	<b>An Imagers Approach to TMVR - Patient and Device Selection</b> <i>G. Ong</i>
10:20 AM	<b>Case: BAV Natural History</b> <i>J. Humphries</i>
10:30 AM	<b>Case: Doppler Manifestations of AV HALT</b> <i>N. Faza</i>
10:40 AM	<b>Mechanism and Quantitation of TR: A Call to Action</b> <i>R. Hahn</i>
10:50 AM	<b>Screening for TV-TEER Or TVVR: What Really Matters to The Heart Team?</b> <i>G. Scalia</i>
11:00 AM	<b>How to Perform TV-TEER</b> <i>R. Hahn</i>

11:10 AM	<b>Case: Mechanism of TR with Lead?</b> <i>R. Lang</i>
11:20 AM	<b>Case: Application of ICE for TV-TEER</b> <i>R. Hahn</i>
11:30 AM	<b>Artificial Intelligence in Valvular Heart Disease: Where is it?</b> <i>R. Lang</i>
11:40 AM	<b>Kahoot Gaming: Everybody Plays!</b>
12:20 PM	<b>Adjourn</b>
4:00 – 5:30 PM	<b>Workshop: Pacific Rim Workshop</b> Grande Ballroom Salon 2-3 <i>E. Tucay, S. Little</i>
4:00 PM	<b>Introduction and Echo Pitfalls</b> <i>J. Oh</i>
4:15 PM	<b>Echocardiography in The Elderly, Including MAC, Sigmoid Septum, Diastolic Dysfunction</b> <i>H. Okura</i>
4:30 PM	<b>Strain Imaging in Valve Disease</b> <i>J. Donato Magno</i>
4:45 PM	<b>Mitral and Tricuspid Regurgitation: Asian vs. US/ Euro Perspective</b> <i>A. Lee</i>
5:00 PM	<b>Suicide Left Ventricle: LVOT Obstruction After Successful TAVI Or SAVR</b> <i>J. Song</i>
5:15 PM	<b>Audience Discussion</b>
5:30 – 6:30 PM	<b>Science At Sunset — Poster Reception</b> Grande Ballroom Foyer and Courtyard <i>Judges: J. Oh, T. Abraham, S. Little</i>

### WEDNESDAY, JANUARY 22, 2025

6:30 AM	<b>Registration, Breakfast, and Visit Exhibits</b> Grande Ballroom Foyer and Grande Ballroom Salon 1
<b>Hike The Volcano: Cardiomyopathies</b> Grande Ballroom Salon 2-3 <i>Moderators: T. Abraham, C. West</i>	
7:00 AM	<b>Deep Dive into Amyloid: Role of Echo</b> <i>A. Barac</i>
7:10 AM	<b>The Other Infiltrative Cardiomyopathies</b> <i>C. West</i>
7:20 AM	<b>Treatment Options for HCM: Before and After Alcohol</b> <i>T. Abraham</i>
7:30 AM	<b>Case: Amyloid Case Include Discussion of CMR and PYP Scans</b> <i>A. Barac</i>
7:40 AM	<b>Case: HCM Improvement With Medical Rx</b> <i>C. West</i>
7:50 AM	<b>Contrast Enhancing Agents for LV Function and More</b> <i>N. Edwards</i>

8:00 AM	<b>Evaluation of Ventricular Function in The Setting of Arrhythmia or Dyssynchrony</b> <i>J. Humphries</i>
8:10 AM	<b>Serial Echo Evaluation of Novel Medical Therapies for HCM</b> <i>N. Fine</i>
8:20 AM	<b>Case: Complex Infiltrative Vs. HCM</b> <i>G. Aurigemma</i>
8:30 AM	<b>Case: Peripartum Cardiomyopathy</b> <i>T. Tsang</i>
8:40 AM	<b>Echo Diagnosis in HFpEF</b> <i>J. Oh</i>
8:50 AM	<b>An Approach to Inflammatory Cardiomyopathies</b> <i>J. Estep</i>
9:00 AM	<b>After Echo, The Next Test to Confirm Your CM Diagnosis Is ...</b> <i>N. Fine</i>
9:10 AM	<b>Case: Athletic Heart Or Weekend Warrior With Pathology?</b> <i>F. Asch</i>
9:20 AM	<b>Case: LVH With AS — Improve After TAVR?</b> <i>J. Oh</i>
9:30 AM	<b>Refreshment Break and Visit Exhibits</b> Grande Ballroom Salon 1
9:50 AM	<b>How to Recognize Ischemic Cardiomyopathy</b> <i>F. Asch</i>
10:00 AM	<b>The Volume Loaded Ventricle: Predicting LV Recovery After Valve Intervention</b> <i>J. Humphries</i>
10:10 AM	<b>Quantitative Imaging of RV Dysfunction: 2D/3D Echo or CMR?</b> <i>R. Lang</i>
10:20 AM	<b>Case: Complex Ischemic Case</b> <i>G. Aurigemma</i>
10:30 AM	<b>Case: Combined LV and RV Dysfunction — How to Quantify the Bad?</b> <i>J. Humphries</i>
10:40 AM	<b>When to Refer to A Heart Failure Specialist: Clinical and Echo Red-Flags</b> <i>J. Estep</i>
10:50 AM	<b>Cardio-Oncology and The Role of Echo</b> <i>A. Barac</i>
11:00 AM	<b>Functional Assessment of The Transplanted Heart: Early and Late Concerns</b> <i>J. Estep</i>
11:10 AM	<b>Case: Cardio-Oncology Case</b> <i>N. Edwards</i>
11:20 AM	<b>Case: Transplant Rejection Case</b> <i>C. West</i>
11:30 AM	<b>The Near Future of Echo for CM Disease Management: Crystal Ball Gazing</b> <i>T. Abraham</i>

11:40 AM	<b>Kahoot Gaming: Everybody Plays!</b>
12:15 PM	<b>Adjourn</b>
4:00 – 5:00 PM	<b>Focus: CARDIC POCUS presented by the Canadian Society of Echocardiography</b> Grande Ballroom Salon 2-3
4:00 PM	<b>Introduction</b> <i>T. Tsang</i>
4:05 PM	<b>Cardiac POCUS Nomenclature-What Does the New Guideline Say and Why?</b> <i>N. Fine</i>
4:15 PM	<b>Cardiac POCUS in Under-Resourced Settings</b> <i>T. Tsang</i>
4:25 PM	<b>Lung Ultrasound for the Echo Lab</b> <i>G. Ong</i>
4:35 PM	<b>The Great Debate! to POCUS or Not to POCUS</b> <i>N. Fine</i>
4:45 PM	<b>Audience Discussion</b>

#### THURSDAY, JANUARY 23, 2025

6:30 AM	<b>Registration, Breakfast, and Visit Exhibits</b> Grande Ballroom Foyer and Grande Ballroom Salon 1
<b>The Big Island Tour: Coast to Coast Echo</b> Grande Ballroom Salon 2-3 <i>Moderators: R. Hahn, D. Phelan</i>	
7:00 AM	<b>The Efficient Echo Lab: Standards for Care and Quality. The Billing Codes You Should Know</b> <i>C. West</i>
7:10 AM	<b>The Billing Codes You Should Know</b> <i>D. Phelan</i>
7:20 AM	<b>Cardiac POCUS Training and The Echo Lab</b> <i>G. Ong</i>
7:30 AM	<b>Billing Case: Strain, 3D, Contrast — Code Optimization</b> <i>D. Phelan</i>
7:40 AM	<b>Billing Case: AI Code Updates — Near Future Considerations</b> <i>T. Abraham</i>
7:50 AM	<b>Role of AI in Echo: Segmentation and Disease Detection</b> <i>D. Phelan</i>
8:00 AM	<b>AI for Hemodynamic Evaluation — Ready for Prime Time?</b> <i>A. Barac</i>
8:10 AM	<b>Can AI Evaluate Diastolic Function?</b> <i>J. Oh</i>
9:30 AM	<b>Refreshment Break and Visit Exhibits</b> Grande Ballroom Salon 1



9:50 AM	<b>Identifying and Describing Uncorrected Adult Congenital Defects</b> <i>C. West</i>	11:00 AM	<b>Multimodality Imaging for Endocarditis</b> <i>S. Little</i>
10:00 AM	<b>Evaluating The Corrected Congenital Defect</b> <i>C. West</i>	11:10 AM	<b>Case: An Approach to The CIED Mass</b> <i>N. Fine</i>
10:10 AM	<b>Bicuspid Valves and Aortopathy. A Guideline Approach to Imaging and Action</b> <i>D. Phelan</i>	11:20 AM	<b>Case: Prosthetic Valve Infection — Changes Over Time</b> <i>J. Oh</i>
10:20 AM	<b>Case: Corrected ACHD With Dysfunction</b> <i>G. Ong</i>	11:00 AM	<b>My Most Challenging Cases in Cardiomyopathies</b> <i>R. Lang, J. Oh, D. Phelan</i>
10:30 AM	<b>Case: Denovo Uncorrected ACHD</b> <i>C. West</i>	11:30 AM	<b>Scanning The Horizon: Future of Echo</b> <i>T. Abraham, R. Hahn, R. Lang, S. Little, G. Ong</i>
10:40 AM	<b>Hunting for Echo Artefacts</b> <i>J. Humphries</i>	12:25 PM	<b>Echo Hawaii Highlights and Closing Remarks</b> <i>S. Little</i>
10:50 AM	<b>Echo Tips and Tricks for Cardiac Masses</b> <i>N. Fine</i>	12:30 PM	<b>Adjourn</b>



## Download Whova, ASE's New Live Course App

ASE is using the online platform Whova as its new live courses app. Whova will give you access to the entire meeting program at your fingertips. You can also use the app to ask questions during the sessions you attend. Search "Whova" in the Google Play and Apple Stores to download.

Whova allows for more interaction among participants at the meeting including:

- Finding others who are attending Echo Hawaii and reaching out to them at any time.
- Planning social activities such as a morning run, coffee hours, or meet-ups with your fellow attendees.

Important course information like:

- The event agenda and planning your personal schedule.
- Access to documents and slides shared by organizers or speakers.
- Updates like possible last minute session changes from the organizers.

If you have already used the Whova app, just double-check what is installed on your phone, tablet, or computer, and log in using your existing account email and password.

### First Time Whova User?

#### MOBILE APP

After downloading Whova, you will be prompted to create an account. We suggest that you use the email address you used when registering for Echo Hawaii and create a strong password. By using the email address you used when registering for Echo Hawaii, the platform will automatically associate you with the event and take you to your event page automatically.

#### WEB PORTAL

Simply use the web portal link <https://whova.com/portal/webapp/itQ8q7B8d9Z3-IRuSu7C/>. Login using the same email and password as your mobile device.

If you are not automatically connected to the event and you are prompted for an event code, please reference the email you were sent on Thursday, January 16, from Christina LaFuria at "[event-noreply@whova.io](mailto:event-noreply@whova.io)" or visit the registration desk outside the Grande Ballroom.

## The Big Island, Hawaii

You will have some free time to enjoy the many sights and activities available on the Big Island such as snorkeling, whale watching, visiting the Volcano National Park, or driving to the summit of the tallest mountain in the world when measured from its oceanic base, Mauna Kea. The Fairmont Orchid is among the best luxury resorts in Hawaii offering exceptional resort amenities, including the open-air Spa Without Walls, oceanfront fine dining, and unique Hawaiian cultural experiences like learning the hula and making a lei. With each step of your journey, the Fairmont Orchid provides endless possibilities for adventure, wellness, and restoration. Visit the concierge for a full list of amenities and island offerings.

## Fairmont Orchid Dining Options

**Brown's Beach House:** The vistas alone are worth a leisurely evening at Brown's Beach House, the AAA Four Diamond restaurant nestled elegantly above Pauoa Bay. The Fairmont Orchid's signature fine dining restaurant, Brown's Beach House is famed for its exquisite Hawaii Island-inspired cuisine and spectacular oceanfront views, accompanied by live Hawaiian music and magnificent sunsets. For a truly unforgettable experience, we invite you to book a private dining space, ideal for a romantic dinner for two or an elegant occasion with family and friends. Dinner 5:30–8:30 PM daily. Reservations highly recommended.

**Orchid Court:** Fuel up for a big day of ocean and island adventures. Take your time over a hearty breakfast and indulge in our extensive island breakfast buffet, featuring tropical fruit, fresh baked pastries, traditional breakfast favorites, Asian specialties, a made-to-order omelet station, coffee, juice and much more! Open daily for breakfast from 6:30 – 10:30 AM.

**Binchotan Bar & Grill:** Explore the long-running creative culinary exchange between Hawaii and Japan firsthand at our traditional northern Japanese grill. It's called robatayaki: the centuries-old practice of fireside cooking. And what it is, is delicious. Open daily 5:00 – 9:00 PM. Reservations highly recommended.

**Brown's Deli:** Brown's Deli offers breakfast and lunch items delicatessen style with an island flair to enjoy at outdoor tables or down at the beach. It's a great place to pick up food gifts to take home, with every item made either on the Big Island or in the state of Hawaii. Open daily 6:30 AM – 5:00 PM.

**Hale Kai Restaurant:** With the warmth of aloha, welcome to Hale Kai! Days are spent enjoying time with the sea, sun and friends. Located poolside, Hale Kai is the perfect venue for a most refreshing lunch, tropical drinks or a casual dinner with sunset views. Open daily for lunch & dinner 11:00 AM – 9:00 PM. No Reservations. Come as you are. It's casual!

**Luana Lounge:** Share island-inspired, hand-crafted sushi and cocktails in our dedicated, lobby-level lounge space. This idyllic spot was made for intimate celebrations, romantic dates and special gatherings. Mark another day of R&R by sipping chilled wine, specialty drinks and fresh sushi rolls. Beverage Service 5:00 – 11:00 PM. Food Service 5:00 – 10:00 PM. Live music 6:00 – 9:00 PM.

**In Room Dining:** In Room Dining at Fairmont Orchid is a pleasant experience in convenience and comfort. Perfect for early-risers, a romantic dinner for two or small gatherings, choose from signature gourmet dishes or hearty 'just like home' selections without having to leave the comfort of your guest room. Place your order from your guest room by dialing extension 7426. Breakfast 6:30 – 10:30 AM. Dinner 5:30 PM – 12:00 AM.

### The following do not have any relationships to disclose:

Theodore Abraham, MD, FASE  
 Federico Asch, MD, FASE  
 Gerard Aurigemma, MD, FASE  
 Natalie Edwards, ACS, AMS, FASE, PhD  
 Jerry Estep, MD, FASE  
 Nadeen Faza, MD, FASE  
 Nowell Find, MD, MS, FRCPC, FASE  
 Rebecca Hahn, MD, FASE  
 Julie Humphries, MBBS, FASE  
 Roberto Lang, MD, FASE  
 Jose Donato Magno, MD, FPSE, FASE  
 Hiroyuki Okura, MD  
 Geraldine Ong, MD  
 Dermot Phelan, MD, PhD, FASE  
 Gregory Scalia, MBBS, FASE  
 Jae-Kwan Song, MD  
 Teresa Tsang, MD, FRCPC, FASE  
 Edwin Tucay, MD, FPSE, FASE  
 Cathy West, MSc, AMS, FASE

### The following do have financial relationships:

Jae-Kwan Song, MD; Chief Medical Officer for REDNIVA  
 Alex Lee, MD; Speaker/ Speaker's Bureau, Siemens  
 Ana Barac, MD, PhD; Consultant/ Advisor, Astra Zeneca

### The following members of the ASE CME Committee (not serving as faculty) do not have any relationships with industry/commercial supporters to disclose:

Bruce Landeck, II, MD, MS, FASE - Chair  
 Kan Liu, MD, PhD, MBA, FASE - Co-Chair  
 Amer Abdulla, MD, FASE - Rising Star Representative  
 Elvera Baron, MD, PhD, FASA, FASE - Member at Large  
 Minakshi Biswas, MD, Vascular Representative  
 Christina Caruso-LaFuria - Staff Liason  
 Ian Crandall, BS, MS, RCS, FASE - Member at Large

Nancy Cutler, MD, FASE, FACC - Member at Large  
 Kymberly Glyde, RDSCS, FASE - Member at Large  
 Ythan Goldberg, MD, FASE - Member at Large  
 Denise Ignatowski, BS, RDSCS, FASE - Member at Large  
 David Harrild, MD, PhD, FASE - Member at Large  
 Eric Kallstrom, MBA, ACS, FASE, FAIUM, FACC - Sonographer Representative  
 Konstantinos Koulogiannis, MD - Interventional Echo Representative  
 Dinesh Kurian - MD, MBA, FASE, FASA - Perioperative Representative  
 Michael Lanspa, MD, FASE - Critical Care Representative  
 Nadia Leandra Do Couto Francisco, MSc, ACS, RDSCS, RSCS, FASE - Member at Large  
 Peace Madueme, MD, MS, FASE - Pediatric Representative  
 Roosha Parikh, MD, FASE - Member at Large  
 Sandhya Ramlogan, MBChB, FASE - Member at Large  
 Oung Savly, MD, FASE - Member at Large  
 Parag Tipnis, MD, FASE - Member at Large  
 Bharathi Upadhyia - Member at Large  
 Hunter Wilson, MD, FASE - Member at Large

### All members of the ASE staff who were involved in the planning and implementation of this activity do not have any relationships with industry/commercial supporters to disclose:

Liz Foster, Online Educational Activities Director  
 Christina LaFuria, Vice President of Educational Activities  
 Danielle Urbina, CMP, Director of Meetings  
 Robin Wiegerink, MNPL, Chief Executive Officer

# Exhibitor Information

## Exhibit Location and Hours

Exhibits are located in the Grande Ballroom Salon 1 during the dates and hours listed below.

Monday, January 20.....	6:30 AM – 12:30 PM
Tuesday, January 21.....	6:30 AM – 12:30 PM
Wednesday, January 22.....	6:30 AM – 12:30 PM
Thursday, January 23.....	6:30 AM – 10:00 AM

## Exhibitor Descriptions

**Alnylam**  
300 Third Street  
Cambridge, MA 02142  
United States  
503-507-6128  
Alnylam.com  
Amvuttra.com



Since its founding, Alnylam has led the translation of RNA interference (RNAi) into a new class of approved and investigational medicines for rare genetic, cardio-metabolic, hepatic infectious, and central nervous system (CNS)/ocular diseases. Based on Nobel Prize-winning science, RNAi therapeutics are a clinically validated approach for the treatment of rare diseases with unmet medical need and prevalent diseases. Alnylam is headquartered in Cambridge, MA. For more information, please visit Alnylam.com.

**Bracco Diagnostics, Inc.**  
259 Prospects Plains Road, Building H  
Monroe Township, NJ 08831  
United States  
609-514-2200  
Bracco.com/en-us/We-Are-Bracco



Bracco Imaging offers products and solutions for all key diagnostic imaging modalities: X-ray (including Computed Tomography, Interventional Radiology, and Cardiac Catheterization), Magnetic Resonance Imaging, Contrast Enhanced Ultrasound, and Nuclear Medicine through radioactive tracers. This portfolio is complimented by a range of medical devices and advanced administration systems.

**Freeland Systems**  
550 Congressional Boulevard  
Suite 115  
Carmel, IN 46032  
United States  
888-615-1888  
FreelandSystems.com



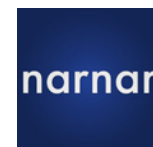
A versatile cardiology PACS system, available both in cloud and local setups, equipped with enterprise-level imaging features and advanced reporting tools. This system is capable of integrating with various third-party software, ensuring adaptability with new technological innovations.

**GE HealthCare**  
251 Locke Drive  
Marlborough, MA 01752  
United States  
866-281-7545  
GE.com



GE HealthCare is a leading global medical technology, pharmaceutical diagnostics, and digital solutions innovator dedicated to providing integrated solutions to make hospitals more efficient, clinicians more effective, therapies more precise, and patients healthier. Learn more at GEHealthCare.com.

**narnar**  
13424 Auburn Court  
Lake Oswego, OR 97035  
United States  
503-442-9273  
narnar.co



Software for contrast echo.

**Philips**  
222 Jacobs Street  
Cambridge, MA 02141  
United States  
617-245-5900  
Philips.com  
USA.Philips.com/Healthcare/Solutions/  
Ultrasound/Cardiovascular-Ultrasound



At Philips, our purpose is to improve people's health and well-being through meaningful innovation. We aim to improve 2.5 billion lives per year by 2030, including 400 million in underserved communities. As a technology company, we – and our brand licensees – innovate for people with one consistent belief: there's always a way to make life better.

**Piccolo Healthcare**  
Private Hospital, Suite 12/14 Hill St,  
Southport QLD 4215, Australia  
+61 1300 363 992  
PiccoloHealth.com



Our mission is deeper than just echo reporting. We want to make a product that not only helps medical professionals but helps patients too, and helps pave the way for tech in healthcare.

We work very hard to bridge the gap between the healthcare industry and the tech world. Our aim is to provide you with an easy and simple user experience, with one of a kind customer service on top.

# ECHO HAWAII™

# 34th ANNUAL

## ASE would like to thank our Industry Roundtable Partners



## Connect with ASE

Join the conversation by using #EchoHawaii

 [Facebook.com/ASEcho](https://www.facebook.com/ASEcho)

 [@ASE360](https://twitter.com/ASE360)

 [American Society of Echocardiography](https://www.linkedin.com/company/ASEcho)

 [@ASE360](https://www.instagram.com/ASE360)

 [Connect.ASEcho.org](https://www.Connect.ASEcho.org)

 [@ase360.bsky.social](https://ase360.bsky.social)

 [ASE360](https://www.youtube.com/ASE360)

[#EchoHawaii](https://twitter.com/ASEchoHawaii)



# ASE

AMERICAN SOCIETY OF  
ECHOCARDIOGRAPHY  
*Sound Saves Lives*

2530 Meridian Parkway

Suite 450

Durham, NC 27713 USA

Phone: 1-919-861-5574

[ASEcho.org](https://www.ASEcho.org)

[ASEFoundation.org](https://www.ASEFoundation.org)