

ECHO FLORIDA

A N N U A L

7th



FINAL PROGRAM

October 7–9, 2018

Preconference Session October 6

**Disney's Grand Floridian Resort
Walt Disney World®, FL**

Course Director

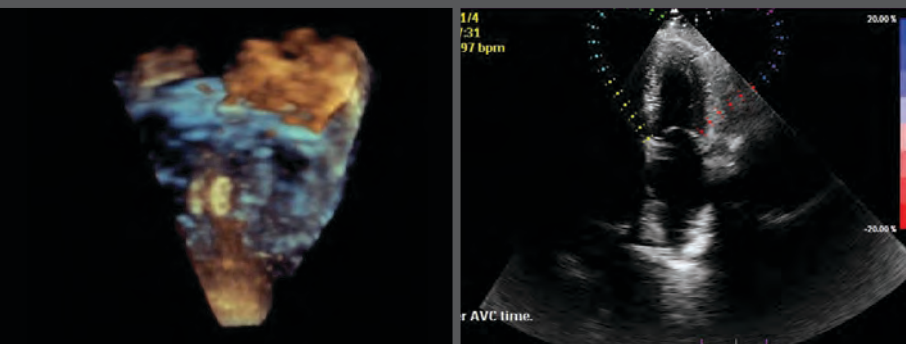
Gerard P. Aurigemma, MD, FASE
UMass Memorial Medical Center
Worcester, MA

Course Co-Director

Linda D. Gillam, MD, MPH, FASE
Past President, ASE
Morristown Medical Center
Morristown, NJ

Learning Lab Director

Madeline Jankowski, RDCS, FASE
Northwestern Memorial Hospital
Chicago, IL



Welcome Message and Faculty

Welcome Message

Welcome to our 7th Annual Echo Florida course, sponsored by ASE. Along with Linda Gillam, Madeline Jankowski, Matt Umland, and the rest of our expert faculty, we hope to provide you with a comprehensive and entertaining review of echo in contemporary clinical practice. As in the past, the goal of Echo Florida is to introduce the newest applications of echocardiography while also emphasizing the applications of basic and advanced echo to daily practice.

As course director, my major goal is to make the presentations relevant to the day-to-day practice of echocardiography. While we cover contemporary research in echocardiography, this is not what Echo Florida is primarily designed to highlight. Instead, our goal is to give the audience insight into how the faculty evaluates echo data as applied to clinical cardiology decision making.

We have designed the sessions so that they are entertaining and interactive; to that end we will engage the audience by using the ASE Courses app to pose questions during the presentations. We will continue the age-old tradition (started last year!) of having the faculty share cases that either highlighted their skill and experience, and perhaps more importantly, where they learned a valuable lesson.

Parenthetically, I would add that the faculty have been recruited not only because they are academic stars, but also because they are superb clinicians, approachable people, and share a passion for teaching.

A brief review of the program: Saturday will feature two preconference sessions. We will devote the entire morning session to the analysis of LV function by strain imaging, using didactic sessions, case reviews, and hands-on strain computations, led by our team of experts. The afternoon session will be devoted to three-dimensional (3D) echocardiography. This 3D workshop will comprise both lectures and computer-based sessions focusing on 3D acquisition techniques, as well cropping and image display. Our hope is that participants will gain an enhanced knowledge of 3D quantification of ventricular size and function, as well as valvular morphology and function.

Our main course, Sunday through Tuesday, will focus on application of echocardiography in valve disease, coronary artery disease, heart failure, and a variety of clinical scenarios. We start with a review of general echocardiography, covering the guidelines published by ASE. During the valvular heart disease sessions, we will cover the hemodynamic assessment of valve disease and also introduce attendees to the role of echocardiography in structural heart disease interventions.

The final day will cover important clinical areas in echocardiography with relevant topics such as congenital heart disease, athlete's heart, cardio-oncology, and pulmonary hypertension. Case-based sessions throughout the conference will help highlight the teaching points of the lecture-based presentations.

John Gorcsan, the "Alex Trebek of Echocardiography," has prepared an entertaining echo quiz show for Monday afternoon, which should be a real hoot!

Orlando is a great place to bring your family for fun and entertainment. We hope that the passion of our faculty for clinical echocardiography is evident and that you enjoy Echo Florida.

Welcome to Orlando.



Course Director
Gerard P. Aurigemma,
MD, FASE
UMass Memorial
Medical Center
Worcester, MA



Course Co-Director
Linda D. Gillam, MD, FASE
Past President, ASE
Morristown Medical Center
Morristown, NJ



Learning Lab Director
Madeline Jankowski,
RDCS, FASE
Northwestern
Memorial Hospital
Chicago, IL

Faculty

Doreen Defaria Yeh, MD
Massachusetts General Hospital
Boston, MA

Bryon A. Gentile II, MD
UMass Memorial Medical Center
Worcester, MA

Steven A. Goldstein, MD, FASE
MedStar Washington Hospital Center
Washington, DC

John Gorcsan III, MD, FASE
Washington University in St. Louis
St. Louis, MO

Konstantinos P. Koulogiannis, MD
Morristown Medical Center
Morristown, NJ

Matthew Parker, MD
UMass Memorial Medical Center
Worcester, MA

Vera H. Rigolin, MD, FASE
Immediate Past President, ASE
Northwestern University
Chicago, IL

Muhammed Saric, MD, PhD, FASE
New York University
New York, NY

Vincent L. Sorrell, MD, FASE
University of Kentucky
Lexington, KY

Lissa Sugeng, MD, MPH, FASE
Yale University
New Haven, CT

Matt Umland, ACS, RDCS, FASE
Aurora Health Care
Milwaukee, WI

Program Information

Overview of Echo Florida

The Echo Florida course is a comprehensive review of cardiovascular ultrasound in clinical practice. The faculty is composed of experts who will discuss the strengths and limitations of established and emerging technologies and illustrate how these technologies can be used to improve and streamline patient care in a cost-conscious manner.

Target Audience

This course is designed for adult and pediatric cardiologists, cardiovascular surgeons, cardiovascular anesthesiologists, cardiac radiologists, fellows in training, cardiovascular sonographers, cardiovascular nurse specialists, internists, intensivists, and emergency physicians with special interest in clinical cardiology and echocardiography.

Learning Objectives

Learning Lab (Preconference)

Upon completion of these sessions, participants will be better able to:

1. Perform strain measurements and understand their applications.
2. Demonstrate ability to crop and display 3D echocardiographic data sets.

Main Conference

Upon completion of these sessions, participants will be better able to:

1. Analyze and quantify systolic and diastolic function by echocardiography.
2. Recognize indications for echocardiographic contrast agents.
3. Interpret stress echocardiograms.
4. Appropriately utilize echocardiography in infective endocarditis.
5. Quantify valvular regurgitation.
6. Classify cardiomyopathies by echocardiography.
7. Identify eligible patients for transcatheter aortic valve replacement.
8. Recognize and assess the function of percutaneous cardiac devices by echocardiography.
9. Describe echocardiographic features of common complex congenital lesions found in adults.
10. Explain normal and abnormal findings of prosthetic valve function.
11. Understand the limitations of echocardiography and better understand when complementary modalities like cardiac MR should be considered.

Preconference Learning Lab

(Additional fee required. Please visit the ASE registration desk to check availability.)

This learning lab is offered on Saturday, October 6. It requires a separate registration fee and is included in the total hours of educational content offered at the course.

Left Ventricular Function and Strain

This session will briefly review the assessment of systolic function by echocardiography and the emerging role of strain. Through a combination of case reviews and hands-on computations using laptops pre-loaded with strain cases, the audience will become better acquainted with the fundamentals of strain imaging. An emphasis will be placed on technical aspects of strain measurements, as well as tips on how to optimize echo data acquisition for strain analysis. Several of the commercially available software packages will be utilized during this session.

3D Workshop

The 3D workshop will be a computer-based session focusing on 3D acquisition techniques, as well as cropping and image display. After introductory lectures, the session will break into a workshop with different 3D vendors. There will be limited numbers of laptops pre-loaded with 3D examples for hands-on learning. This workshop will cover 3D imaging for TTE and TEE.

Disclaimer

The information provided during this CME activity is for continuing education purposes only and is not meant to substitute for the independent medical judgment of a healthcare provider relative to diagnostic and treatment options of a specific patient's condition.

Accreditation and Designation

This activity has been planned and implemented in accordance with the Essential Areas and Policies of the Accreditation Council for Continuing Medical Education (ACCME) through the joint providership of the American Society of Echocardiography and the American Society of Echocardiography Education and Research Foundation. The American Society of Echocardiography is accredited by the ACCME to provide continuing medical education for physicians.

ASE designates this live activity for a maximum of **28.5 AMA PRA Category 1 Credits™** for attending both the Main Conference and Learning Lab.

ASE designates the Echo Florida Learning Lab for a maximum of 7.75 hours and a maximum of 20.75 hours for the Main Conference. Attendees should claim only the credit commensurate with the extent of their participation in the activity.

Program Information

Successful completion of this CME activity enables the participant to earn up to **28.5 MOC points in the American Board of Internal Medicine's (ABIM) Maintenance of Certification (MOC) program and/or The American Board of Anesthesiology® (ABA) Maintenance of Certification in Anesthesiology Program® or MOCA®**. Participants will earn MOC and/or MOCA points equivalent to the amount of CME credits claimed for the activity. It is ASE's responsibility to submit participant completion information to ACCME for the purpose of granting ABA MOCA and/or ABIM MOC points.



Maintenance of Certification in Anesthesiology Program® and MOCA® are registered certification marks of the American Board of Anesthesiology®. MOCA 2.0® is a trademark of the American Board of Anesthesiology®.

Daily breakdown of CME credits:

Saturday, October 6 Learning Lab = 7.75 hours

Sunday, October 7 = 7.0 hours

Monday, October 8 = 7.25 hours

Tuesday, October 9 = 6.5 hours

The ACCME and the European Board of Accreditation in Cardiology (EBAC) recognize each other's accreditation systems as substantially equivalent. To obtain EBAC credit for participation in this activity, submit evidence of participation directly to EBAC (www.ebac-cme.org).

The European Union of Medical Specialists (UEMS)-European Accreditation Council for Continuing Medical Education (EACCME) has an agreement of mutual recognition of continuing medical education (CME) credit with the American Medical Association (AMA). European physicians interested in converting AMA PRA Category 1 Credit™ into European CME credit (ECMEC) should contact the UEMS (www.uems.eu).

ARDMS, CCI, and Sonography Canada recognize ASE's certificates and have agreed to honor the credit hours toward their registry requirements for sonographers.

All or a portion of this educational activity may meet the CME requirement for IAC Echocardiography accreditation.

This activity is eligible for Section 1 credits in the Royal College of Physicians and Surgeons of Canada's Maintenance of Certification (MOC) Program. Participants must log into MAINPORT to claim this activity.

Disclosure

ASE is committed to ensuring that its educational mission, and all sponsored educational programs, are not influenced by the special interests of any corporation or individual, and its mandate is to retain only those speakers whose financial interests can be effectively resolved to maintain the goals and educational integrity of the program. While a monetary or professional affiliation with a corporation does not necessarily influence a speaker's presentation, the Essential Areas and policies of the ACCME require that any relationship that could possibly conflict with the educational value of the program be resolved prior to the educational session and disclosed to the audience. In accordance with these policies, ASE implemented mechanisms prior to the planning and implementation of this CME activity to identify and resolve conflicts of interest for all individuals in a position to control content. Disclosure information is referenced and can be found beginning on page 11 of this program.

Commercial Support Disclosure Statement

Educational Grants: This activity is supported in part by unrestricted educational grants from Abbott, Edwards, Lantheus, and Medtronic.

In-Kind Donations: This activity is supported in part by in-kind donations of devices or software from GE Healthcare, Philips, Siemens Healthineers, and TOMTEC.

How to Obtain Credit

To claim your CME for Echo Florida, please follow the steps below using your Mozilla Firefox, Google Chrome, or Safari browser. **Internet Explorer will not work.** The deadline to claim credit is **November 16, 2018**.

ASE Members:

1. Go to ASEcho.org and log in to the Member Portal with your username (email) and password.
 - a. If you forget your password, simply click "Retrieve" under the login.
2. Click on Education/ASEUniversity. This will take you directly to your ASEUniversity account.

Nonmembers:

1. Go to ASEUniversity.org.
2. Log into your existing account or create a new one.

To Claim Credit:

3. Click Add Access Code on the left sidebar and enter the code, "FLORIDA2018"
4. Verify your registration information. Please be sure to use the same information that you used to register for the event.
5. Once verified, click CE Information tab and Take Exam button to claim your CME credit. CME credits are not earned until the entire evaluation has been completed.
6. Your certificate will be available for immediate download and can also be found under My Account in the My Transcripts section.

Remember to enter your ABIM number and birthdate if you choose to have MOC points for this meeting submitted to ABIM. There is a space for this information on the first page of the evaluation.

Attendee Information and Regulations

Registration Location and Hours

The ASE Registration desk is located in the Grand Foyer, which is on the main floor of Disney's Grand Floridian Resort. The Registration desk will be staffed during the following hours:

Saturday, October 6, 2018	7:00 AM–5:15 PM
Sunday, October 7, 2018	7:00 AM–4:45 PM
Monday, October 8, 2018	7:00 AM–5:00 PM
Tuesday, October 9, 2018	7:00 AM–4:00 PM

Food Functions

ASE will provide breakfast and coffee breaks for all registered attendees in Salons 1-4. Please refer to the program schedule beginning on page 7 for the times.

ASE will provide lunch to all registered Learning Lab attendees on Saturday, October 6 in Salons 1-4. Lunch will be provided to all registered attendees of the main conference Sunday–Tuesday in Salons 1-4.

Disney's Grand Floridian Resort offers their guests a variety of dining options. Please see page 6 for more details.

Internet Access

There is complimentary wireless internet available throughout the Disney's Grand Floridian Resort. Attendees of this course also receive complimentary wireless internet in their guest rooms.

Business Center

The Business Center is located in the Convention Center and is open daily. It offers fax, photo-copier, mail, and computer services.

Safety

Audience seating is on a first-come, first-served basis. According to fire code, a session must be closed if the room fills to capacity. Inappropriate behavior or undesirable conduct, including, but not limited to, verbal or physical abuse, whether threatened or performed, will not be permitted or tolerated. You must wear your name badge at all times when attending the session or events.

Photography/AV Policy

No person may record any portion of the ASE Echo Florida Course, either by video, still or digital photography, audio, or any other recording or reproduction mechanism. This includes recording of presentations and supporting audio visual materials. Taking photos of, or recording the content of, presentation slides is also prohibited and is considered intellectual piracy. Attendees who ignore this policy will be asked to leave the educational session and are at risk of losing their name badge and attendance privileges. Photographs taken for the purpose of sharing on social media is allowed, but should avoid showing presentation slides. Please use #EchoFlorida when posting on social media. ASE reserves the rights to all recordings or reproductions at ASE meetings. Please be aware that during the ASE Echo Florida Course, attendees, vendors, guests, and exhibitors may be photographed or videotaped by ASE staff capturing the event. Some of these photographs or videos may be displayed by ASE in future publication or other materials. By virtue of your attendance, you agree to allow ASE to use photographs of you in its promotional materials.

Children

ASE does not offer childcare services. Due to limited seating capacity and the highly technical nature of this program, children are not allowed to attend the educational session.

Mobile Device Use

We encourage you to use your mobile device to download the new ASE Courses app. After you have downloaded the app, you will have access to the entire meeting program at your fingertips. You can also use the app to ask questions during the sessions you attend. Please remember to turn your mobile device to silent or vibrate mode.

Search "ASE Courses" in the Google Play and Apple stores to download.



Location Information

Disney's Grand Floridian Resort

Victorian elegance meets modern sophistication at this bayside resort hotel. Relax in the lobby as the live orchestra plays ragtime, jazz, and popular Disney tunes. Bask on the white-sand beach, indulge in a massage, and watch the fireworks light up the sky over Cinderella Castle. Just one stop to Magic Kingdom park on the complimentary Resort Monorail, this timeless Victorian-style marvel evokes Palm Beach's golden era.

Special Features: Beach pool with waterslide and kids play area as well as a courtyard pool, a fitness center and jogging paths, a world-class spa and health club, watercraft rentals and fishing excursions at the Marina, a business center, Wi-Fi access throughout convention center and lobby common areas, in-room high speed internet access, monorail service to Magic Kingdom® Park and Epcot® and Magic Kingdom® Resorts, and access to championship golf courses.

Extend Your Stay: Once you arrive, you will discover the Walt Disney World® Resort offers more magical experiences than you ever dreamed possible. Don't pass up the chance to add an extra few days before or after the course for a spectacular golf or spa getaway or the perfect vacation with family and friends. Disney's Grand Floridian Resort & Spa will extend the same room rates to any nights you add to your visit.

Make Time for the Magic!

As a Disney Resort Guest, you will enjoy special benefits that make your Walt Disney World® stay easier and more relaxing than ever. These benefits provide everything from extra time in the Theme Parks and convenient transportation to more magic all around.

Purchase Theme Park Tickets in Advance

Available only to meeting attendees, their guests, and family members, Disney's multi-day and half-day meeting/convention tickets are designed to fit any agenda and can't be purchased at the Theme Park gates. To receive these special Theme Park tickets, you must purchase online at MyDisneyGroup.com/echo18 or call 407-827-6777.

Enhanced! Extra Magic Hour Benefit

Each day one of the Theme Parks opens an hour early or stays open up to three hours after regular Park hours for guests staying at select Disney Resorts, giving you even more time to enjoy select attractions. This is a great way for you to maximize the value of your Disney Theme Park Tickets based around your schedule! *Valid Theme Park admission and Walt Disney World® Resort ID are required.*

Convenient Walt Disney World® Transportation

If you are arriving by air at Orlando International Airport, Disney's legendary service starts the moment you touch down and continues throughout your stay. **Disney's Magical Express®** – Take advantage of the latest innovation in Disney's legendary commitment to service and convenience. This exclusive complimentary shuttle and luggage delivery service conveniently takes you from the airport directly to your Disney Resort and back again when it's time to return. It's the hassle-free benefit that allows you to arrive at your meeting relaxed and stress-free. To book, call 407-827-6777 or visit MyDisneyGroup.com/Echo18 for more information.

During your stay, enjoy the convenience of Disney transportation throughout the Walt Disney World® Resort. Just steps from your door, boats and motor coaches are waiting to take you to and from the Theme Parks, Water Parks, the Downtown Disney® area and more.

Disney's Grand Floridian Resort Dining Options

1900 Park Fare: Enchant your little ones with a tea party or buffet in a carousel-themed dining room—hosted by Disney Characters! Serving breakfast, lunch, and dinner.

Beaches Pool Bar & Grill: Sip a refreshing signature cocktail and enjoy classic American snacks at this laid-back bar on the beach.

Cítricos: Experience a gastronomic indulgence of Mediterranean-inspired cuisine paired with an award-winning wine list. Advance reservations are highly recommended. Serving dinner.

Narcoossee's: Dine in a waterfront setting with freshly caught seafood and fabulous views of Seven Seas Lagoon. Serving dinner.

Gasparilla Island Grill: Choose from an array of salads, soups, sandwiches and more—including late-night pizza offerings. Serving breakfast, lunch, and dinner.

Grand Floridian Café: Enjoy the airy ambiance of a Victorian manor serving up American classics in the English countryside. Serving breakfast, lunch, and dinner.

Room service is also available, as well as many other restaurants located close to Disney's Grand Floridian Resort via monorail, bus, or water taxi. View a full list of options at disneyworld.disney.go.com/dining/magic-kingdom.



Schedule of Events

Saturday, October 6, 2018

7:00 AM	Registration and Breakfast Grand Foyer and Salons 1-4
Learning Lab: Left Ventricular Function and Strain <i>(Additional Fee Required)</i> Salons 5-9	
7:45 AM	Introduction to the Learning Lab <i>G. Aurigemma</i>
7:55 AM	Basic Left Ventricular Function <i>G. Aurigemma, M. Parker</i>
8:15 AM	Introduction to Strain: Theory and Applications <i>J. Gorcsan</i>
8:55 AM	Optimizing Imaging for Strain <i>J. Gorcsan, M. Jankowski</i>
9:55 AM	Refreshment Break Salons 1-4
10:25 AM	Workshop: Review of Strain Cases <i>G. Aurigemma, B. Gentile, J. Gorcsan, K. Koulgiannis, M. Parker</i>
12:25 PM	Lunch and Visit Exhibits Salons 1-4

Learning Lab: 3D Workshop *(Additional Fee Required)*

Salons 5-9	
1:25 PM	Introduction to 3D Learning Lab <i>G. Aurigemma</i>
1:30 PM	Overview of 3D in Contemporary Practice <i>V. Rigolin</i>
1:50 PM	Hands-on Computer Workshop: 3D TTE for Volumes and Visualizing Valves <i>M. Jankowski, M. Umland</i>
3:00 PM	Refreshment Break Salons 1-4
3:15 PM	The Comprehensive 3D TEE Examination: Volumes and Valves <i>V. Rigolin, L. Sugeng</i>
3:25 PM	Hands-on Computer Workshop: TEE Cases for 3D <i>B. Gentile, K. Koulgiannis, M. Parker, V. Rigolin, L. Sugeng</i>
5:15 PM	Adjourn

Sunday, October 7, 2018

7:00 AM	Registration and Breakfast Grand Foyer and Salons 1-4
General Echocardiography <i>Moderator: L. Gillam</i> Salons 5-9	
7:45 AM	Welcome <i>G. Aurigemma</i>
7:50 AM	Past President's Address <i>V. Rigolin</i>
8:00 AM	Chamber Quantification Guidelines Update I: Left Heart Measurements <i>L. Gillam, M. Jankowski</i>
8:25 AM	Chamber Quantification Guidelines Update II: Right Heart Measurements <i>L. Gillam, M. Jankowski</i>
8:45 AM	Strain Imaging: Myocardial Mechanics Simplified and Applied <i>J. Gorcsan</i>
9:15 AM	Diastolic Function Assessment: The Es, As, and es <i>G. Aurigemma</i>
9:40 AM	Optimizing Echo Acquisition for Strain and Diastology <i>M. Jankowski</i>
10:05 AM	Question and Answer
10:15 AM	Refreshment Break and Visit Exhibits Salons 1-4
10:45 AM	Strain in Clinical Practice in 2018: Case Reviews <i>G. Aurigemma, J. Gorcsan, V. Sorrell</i>
11:10 AM	3D Echo: Acquisition, Cropping, and Display <i>L. Sugeng</i>
11:30 AM	Cases: 3D Application in Practice <i>V. Rigolin, L. Sugeng</i>
11:50 AM	Coups, Goofs, and Things I Have Learned in the Past Year: Part I <i>L. Gillam, V. Rigolin, L. Sugeng</i>
12:10 PM	Lunch and Visit Exhibits Salons 1-4
1:10 PM	Performing a Comprehensive TEE Examination <i>V. Rigolin</i>
1:30 PM	Guidelines for the Use of Echocardiography in the Evaluation of a Cardiac Source of Embolism <i>M. Saric</i>
1:50 PM	Clinical Recommendations for Multimodality Cardiovascular Patients with Pericardial Disease <i>S. Goldstein</i>

Schedule of Events

2:10 PM	Expert Consensus for Multimodality Imaging Evaluation of Adult Patients During and After Cancer Treatment <i>V. Sorrell</i>
2:30 PM	Refreshment Break and Visit Exhibits Salons 1-4
3:00 PM	Regurgitant Valvular Quantitation: What is New in the Guidelines <i>V. Rigolin</i>
3:20 PM	Where Contrast Administration Makes a Difference <i>L. Gillam</i>
3:40 PM	The Cath Showed What? Challenging Stress Echo Cases <i>B. Gentile, M. Saric, V. Sorrell</i>
4:00 PM	Coups, Goofs, and Things I Have Learned in the Past Year: Part II <i>S. Goldstein, M. Saric, V. Sorrell</i>
4:45 PM	Adjourn

Monday, October 8, 2018

7:00 AM	Registration and Breakfast Grand Foyer and Salons 1-4
Valvular Heart Disease Part I <i>Moderator: M. Saric</i> Salons 5-9	
7:45 AM	Basic and Advanced Assessment of Aortic Stenosis <i>V. Rigolin</i>
8:20 AM	Low Gradient, Severe Aortic Stenosis: Dobutamine Echo to the Rescue <i>L. Gillam</i>
8:40 AM	Quantitation Errors in Clinical Echocardiography: My Pet Peeves <i>M. Jankowski, K. Koulogiannis, M. Parker, L. Sugeng</i>
9:10 AM	Assessing Prosthetic Valve Function: Differentiating Normal From Stenotic or Regurgitant <i>S. Goldstein, M. Parker</i>
9:30 AM	Question and Answer
9:50 AM	Refreshment Break and Visit Exhibits Salons 1-4

Valvular Heart Disease Part II

Moderator: S. Goldstein
Salons 5-9

10:20 AM	Smoke, Sludge, and Tsuris: Imaging the Left Atrial Appendage <i>B. Gentile</i>
10:40 AM	Echo in Asymptomatic Mitral Regurgitation and Aortic Regurgitation <i>M. Saric</i>
11:00 AM	Coups, Goofs, and Things I Have Learned in the Past Year: Part III <i>S. Goldstein, M. Parker, M. Saric</i>
11:40 AM	Question and Answer
12:00 PM	Lunch and Visit Exhibits Salons 1-4

Heart Failure

Moderator: J. Gorcsan
Salons 5-9

1:00 PM	Imaging the Patient with Heart Failure <i>G. Aurigemma, V. Sorrell</i>
1:20 PM	Hypertrophic Cardiomyopathy <i>L. Gillam</i>
1:40 PM	Cases: Strain in Myocardial Disease <i>J. Gorcsan</i>
2:00 PM	Challenging Cases in Diastolic Function Assessment <i>G. Aurigemma</i>
2:20 PM	Question and Answer
2:40 PM	Refreshment Break and Visit Exhibits Salons 1-4
3:10 PM	Cases: Discrepant Valvular Quantification: Stenosis <i>L. Gillam, V. Rigolin</i>
3:30 PM	Cases: Valvular and Myocardial Disease: Regurgitation <i>G. Aurigemma, K. Koulogiannis</i>
3:50 PM	Stump the Stars: Echo Cases and Discussion <i>G. Aurigemma, L. Gillam, M. Parker</i>

Fun and Games

Salons 5-9

4:20 PM	Rapid Fire Echo Case Quiz: Everyone Plays! <i>J. Gorcsan</i>
5:00 PM	Adjourn

Exhibit Information

Tuesday, October 9, 2018

7:00 AM **Registration and Breakfast**
Grand Foyer and Salons 1-4

Clinical Echocardiography

Moderator: *G. Aurigemma*
Salons 5-9

8:00 AM	TAVR: Procedure Guidance by Echo <i>M. Saric</i>
8:25 AM	Tricuspid Regurgitation: The Elephant in the Reading Room <i>V. Rigolin</i>
8:50 AM	Are These Scallops Fresh?: Interesting Mitral Valve Cases <i>G. Aurigemma, S. Goldstein, L. Sugeng</i>
9:10 AM	What I Have Learned from 3D Imaging of Heart Valve Disease <i>S. Goldstein, V. Rigolin, L. Sugeng</i>
9:40 AM	Left Atrial Appendage Closure Devices <i>B. Gentile</i>
10:00 AM	Refreshment Break and Visit Exhibits Salons 1-4
10:30 AM	Cases: Interventional Imaging <i>S. Goldstein, M. Parker</i>
11:10 AM	Congenital Heart Disease Part I: The Unrepaired Adult <i>D. Defaria Yeh</i>
11:30 AM	Congenital Heart Disease Part II: The Repaired Adult <i>D. Defaria Yeh</i>
11:50 AM	Infectious Endocarditis <i>S. Goldstein</i>
12:10 AM	Athlete's Heart vs. Cardiomyopathy? <i>L. Gillam</i>
12:30 PM	Question and Answer
1:00 PM	Lunch and Visit Exhibits Salons 1-4
2:00 PM	The Role of Echo in Pulmonary Hypertension <i>L. Gillam</i>
2:20 PM	Pregnancy and Heart Disease: The Role of Echo <i>D. Defaria Yeh</i>
2:40 PM	Cases: Stress Testing in Valvular Disease <i>M. Saric, V. Sorrell</i>
3:00 PM	Cases: Adult Congenital Heart Disease <i>D. Defaria Yeh</i>
3:20 PM	Stump the Stars: Echo Cases and Discussion <i>G. Aurigemma, S. Goldstein, J. Gorcsan</i>
4:00 PM	Adjourn

Exhibit Location and Hours

Exhibits are located in Salons 1-4 during the dates and hours listed below.

Saturday, October 6, 2018	7:00 AM–3:00 PM
Sunday, October 7, 2018	7:00 AM–3:00 PM
Monday, October 8, 2018	7:00 AM–3:10 PM
Tuesday, October 9, 2018	7:00 AM–2:00 PM

Exhibitor Descriptions



Bracco Diagnostics
259 Prospect Plains Road, Building H
Monroe Township, NJ 08831
United States
Phone: 412-651-1778
Lumason.com



Bracco Diagnostics Inc., a U.S.-based subsidiary of Bracco Imaging SpA, is a worldwide provider of diagnostic imaging solutions for use in CT, MR, Nuclear, and most recently for Ultrasound.



GE Healthcare
9900 Innovation Drive
Wauwatosa, WI 53226
United States
Phone: 414-544-2638
gehealthcare.com



GE Healthcare provides transformational medical technologies that will shape a new age of patient care. GE Healthcare's expertise in medical imaging and information technologies, medical diagnostics, patient monitoring systems, disease research, drug discovery and biopharmaceuticals is dedicated to detecting disease earlier and tailoring treatment for individual patients.

Exhibit Information



Hitachi Healthcare
1959 Summit Commerce Park
Twinsburg, OH 44087
United States
Phone: 800-800-3106
hitachihealthcare.com



Hitachi Healthcare is proud of the reputation we've built as an industry leader in diagnostic ultrasound. Known for unparalleled Doppler performance, superior system reliability and intuitive use of cutting edge technology, Hitachi Healthcare remains the ideal choice for exceptional diagnostic ultrasound imaging.



Lantheus Medical Imaging, Inc.
331 Treble Cove Road
North Billerica, MA 01862
United States
Phone: 800-362-2668
lantheus.com



Lantheus Medical Imaging, a global leader in the development, manufacture and commercialization of innovative diagnostic imaging agents and products serving Echocardiography and Nuclear Medicine specialties, is headquartered in North Billerica, Massachusetts with offices in Puerto Rico and Canada.



Philips Healthcare
3000 Minuteman Road
Andover, MA 01810
United States
Phone: 888-744-5477
usa.philips.com/healthcare



Philips is a leading health technology company focused on improving people's health and enabling better outcomes across the health continuum from healthy living and prevention, to diagnosis, treatment and home care. Philips leverages advanced technology and deep clinical and consumer insights to deliver integrated solutions. Headquartered in the Netherlands, the company is a leader in diagnostic imaging, image-guided therapy, patient monitoring and health informatics, as well as in consumer health and home care.



Siemens Healthineers
40 Liberty Boulevard
Malvern, PA 19355
United States
Phone: 610-448-6322
usa.siemens.com/Healthineers



Siemens Healthineers is committed to becoming the trusted partner of healthcare providers worldwide, enabling them to improve patient outcomes while reducing costs. Driven by our legacy of engineering excellence and our pioneering approach, we are a global leader in medical imaging, diagnostics, clinical IT, and services.



Wolters Kluwer
1203 Snug Harbor Drive
Casselberry, FL 32707
United States
Phone: 407-312-9523
lww.com

Wolters Kluwer is the proud publisher of the Journals of the American Heart Association, including Circulation: Cardiovascular Imaging. We offer a full range of specialized books, journals and electronic media. Visit us today.

Faculty Disclosures

The following faculty members do not have any relationships with industry/commercial supporters to disclose:

Gerard P. Aurigemma, MD, FASE

Doreen Defaria Yeh, MD

Linda D. Gillam, MD, FASE

Steven A. Goldstein, MD, FASE

Konstantinos P. Koulogiannis, MD

Matthew Parker, MD

Vera H. Rigolin, MD, FASE

The following faculty members do have financial relationships with industry/commercial supporters to disclose:

Bryon A. Gentile II, MD – Boston Scientific (Consultant, Advisor)

John Gorcsan III, MD, FASE – GE (Research Grant Support (including PI)); Hitachi Aloka (Research Grant Support (including PI)); Tomtec (Research Grant Support (including PI)); V-Wave (Research Grant Support (including PI)); EBR Systems (Research Grant Support (including PI))

Madeline Jankowski, RDCS, FASE – BayLabs Inc (Consultant, Advisor)

Muhamed Saric, MD, PhD, FASE – Philips (Speaker/Speakers Bureau); Medtronic (Speaker/Speakers Bureau); Siemens (Consultant, Advisor)

Vincent L. Sorrell, MD, FASE – Lantheus Medical Imaging ((Speaker/Speakers Bureau); Siemens (Corporate research collaboration (including trials/product testing)); HeartFlow (Research grant support (including PI))

Lissa Sugeng, MD, MPH, FASE – Siemens Healthineers (Speaker/Speakers Bureau, Consultant, Advisor, Research grant support (including PI), Corporate research collaboration (including trials/product testing)); Philips Healthcare (Speaker/Speakers Bureau, Consultant, Advisor, Corporate research collaboration (including trials/product testing)); Toshiba (Speaker/Speakers Bureau, Corporate research collaboration (including trials/product testing)); Hitachi (Speaker/Speakers Bureau, Corporate research collaboration (including trials/product testing)); Bracco (Corporate research collaboration (including trials/product testing))

The following members of the ASE CME Committee, Education Committee, and Board of Directors (not serving as faculty) do not have any relationships with industry/commercial supporters to disclose:

Jayashri Aragam, MD, FASE; Keith Collins, MS, FDCS, FASE; Gregory Ensing, MD, FASE; Alan Finley, MD, FASE; Edward Gill, MD, FASE; Amer Johri, MD, FASE; James Kirkpatrick, MD, FASE; Jonathan Lindner, MD, FASE; G. Burkhard Mackensen, MD, PhD, FASE; Elizabeth McIlwain, MHS, ACS, RCS, FASE; Carol Mitchell, PhD, RDMS, RDCS, RVT, RT(R), ACS, FASE; Geoffrey Rose, MD, FASE; Liza Sanchez, RCS, FASE; Elaine Shea, ACS, RCS, RCCS, FASE; Madhav Swaminathan, MD, FASE; Benjamin Eidem, MD, FASE; Carolyn Altman, MD, FACC, FAHA, FASE; Louis Bezold, MD, FASE; Lori Blauwet, MD, FASE; Merri Bremer, EdD,

RN, RDCS, ACS, FASE; Enrique Garcia-Sayan, MD, FASE, FACC; Noreen Kelly, MD, MBA; Chris Kramer, ACS, RDCS, FASE; Raymond Musarra, RDCS, RCS, FASE; Benton Ng, MD; Priscilla Peter, BA, RDCS, FASE; Nidhish Tiwari, MD, FASE; Bryan Wells, MD, FASE; Danita Yoerger Sanborn, MD, FASE; Timothy Slesnick, MD, FASE; Jennifer Betz, BS, RDCS, FASE; Hisham Dokainish, MD, FASE; Andrea Duncan, MD, FASE; Tia Gordon, RDCS, FASE; Brian Holland, MD, FASE; Eric Kallstrom, ACS, RDCS, FASE; Jin Kim, MD, PhD, FASE; Rebecca Klug, BA, ACS, RDCS, RT(R), FASE; Aparna Kulkarni, MD; Monica Mukherjee, MD, MPH, FACC, FASE; Nishath Quader, MD, FASE; Hedda Richards, RDCS, RCS, FASE; Shubhika Srivastava, MD, FASE; Richard Stacey, MD, FASE; Carolyn Taylor, MD, FASE; Richard Weiss, MD, FASE

The following members of the current ASE CME Committee, Education Committee, and Board of Directors (not serving as faculty) have relationships with industry/commercial supporters to disclose:

Bonita Anderson, MAPPLSC, DMU, AMS, ACS, FASE – Alerte Digital Health (Consultant/Advisor)

Himani Bhatt, MD, MPA, FASE – Neochord, LLC (Consultant/Advisor)

Sabe De, MD, FRCPC, FASE – Servier (Speakers Bureau); Novartis (Speakers Bureau, Consultant/Advisor); Bayer (Speakers Bureau, Consultant/Advisor); Pfizer (Speakers Bureau); Actelion (Speakers Bureau); Medtronic (Speakers Bureau)

Judy Hung, MD, FASE – Chordalign, LLC (Consultant/Advisor)

Wyman Lai, MD, MPH, FASE – Zogenix (Consultant/Advisor)

Michael Main, MD, FASE – Boston Scientific (Consultant/Advisor)

William Perez, MD, MA, FASE – Baxter (holds a stock position)

Douglas Shook, MD, FASE – Boston Scientific (Speaker); Edwards Lifesciences (Speaker)

James Thomas, MD, FASE – GE (Consultant/Advisor); Abbott (Consultant/Advisor); Edwards Lifesciences (Consultant/Advisor); BayLabs (Consultant/Advisor)

David Wiener, MD, FASE – Novitas (Consultant/Advisor)

All members of the ASE staff who were involved in the planning and implementation of this activity do not have any relationships with industry/commercial supporters to disclose:

Christina LaFuria, Director of Education

Jaclyn Levine, Meetings Manager

Erin McClure, Director of Meetings

Robin Wiegerink, MNPL, Chief Executive Officer

ECHO FLORIDA

A N N U A L 7th

ASE would like to thank our
Industry Roundtable Partners



Canon



HITACHI
Inspire the Next



PHILIPS

SIEMENS
Healthineers

Connect with ASE

Join the conversation by using #EchoFlorida



Facebook.com/asecho



@ASE360



The American Society of Echocardiography



@ASE360



Connect.asecho.org



Pinterest.com/ASE360



ASE

American Society of
Echocardiography

2530 Meridian Parkway
Suite 450
Durham, NC 27713 USA

Phone: 919-861-5574

Fax: 919-882-9900

ASEcho.org