

# ECHO ASE ASEAN

# ANNUAL 3rd



## FINAL PROGRAM

March 22–24, 2018

Conrad Manila Hotel  
Manila, Philippines

Course Director

**James D. Thomas, MD, FASE**

Past President, ASE

Northwestern Medicine

Chicago, IL

Course Co-Director

**Roberto M. Lang, MD, FASE**

Past President, ASE

University of Chicago Medical Center

Chicago, IL

Course Co-Director

**Kian-Keong Poh, MBBChir, FASE**

Vice Chairman, ASEAN Society of Echocardiography

National University Heart Centre

Singapore, Singapore

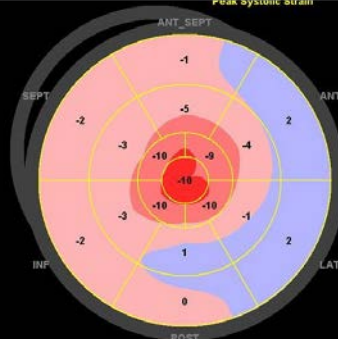
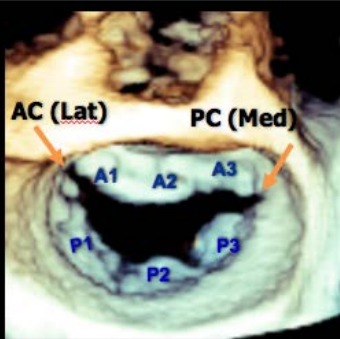
Course Co-Director

**Edwin Tucay, MD**

Chairman, ASEAN Society of Echocardiography

Philippine Heart Center

Manila, Philippines



# Welcome Message

On behalf of my co-chairs, Roberto Lang, Edwin Tucay, and KK Poh, and our entire superb international faculty, I extend a warm welcome to you for joining us in Manila for the 3rd Echo ASE-ASEAN Conference. Building on the great momentum and enthusiasm from our first two Echo ASE-ASEAN meetings in Bangkok, we have something for everyone in echo, regardless of your background. If you are relatively early in your echo education or want to focus on acquisition techniques, we will have dedicated sessions in the afternoons on the basics of echocardiography. Paralleling these sessions will be more advanced topics, including 3D and strain, which are growing rapidly in our practice. In the mornings, all of us will be together, covering a host of clinical echo topics with a strong case-based emphasis. Our faculty are the best in the world, including ASE Past Presidents Roberto Lang and Tom Ryan (and myself), Lissa Sugeng from Yale, and Megan Yamat, a sonographer in Roberto's lab. From Australia, we brought Greg Scalia and Bonita Anderson, two of the most effective and entertaining educators around. From the ASEAN region, my co-chair KK Poh has organized outstanding speakers from Indonesia, Singapore, Malaysia, Thailand, and Vietnam, while local host Edwin Tucay, and our friends in the Philippines Society of Echocardiography, are covering a number of topics and presenting many fascinating cases for our assessment. We will also have original research for you to learn from. The co-chairs and I have selected some great abstracts and unique case reports that will be on display throughout the meeting.

Manila is a wonderful locale for our meeting. I was here last September and found it a fascinating mix of cultures from Southeast Asia, Spain, and Mexico, with a complex cuisine that borrows from all of these places. If you have more time to spend in the Philippines, look no farther than the beautiful islands of Boracay, Cebu, and Palawan, which Conde Nast Traveler declared to be the top three islands in the **world!** How can you go wrong?

Welcome to Manila!



A handwritten signature in black ink, appearing to read "James D. Thomas". The signature is fluid and cursive.

James D. Thomas, MD, FASE Course Director  
Past President, ASE Northwestern Medicine Chicago, IL

# Invited Faculty

## Course Director

**James D. Thomas, MD, FASE**  
Past President, ASE  
Northwestern Medicine Chicago, IL

## Course Co-Directors

**Roberto M. Lang, MD, FASE**  
Past President, ASE  
University of Chicago Medical Center  
Chicago, IL

**Kian-Keong Poh, MBBChir, FASE**  
Vice Chairman, ASEAN Society of Echocardiography  
National University Heart Centre  
Singapore, Singapore

**Edwin Tucay, MD, FPSE**  
Chairman, ASEAN Society of Echocardiography  
Philippine Heart Center  
Manila, Philippines



## Invited International Faculty

**Bonita A. Anderson, MAPPLSC, DMU, AMS, ACS, FASE**  
Prince Charles Hospital  
Queensland, Australia

**Thomas Ryan, MD, FASE**  
The Ohio State University  
Columbus, OH

**Gregory M. Scalia, MBBS, FASE**  
Prince Charles Hospital  
Queensland, Australia

**Lissa Sugeng, MD, MPH, FASE**  
Yale University, Internal Medicine Cardiology  
New Haven, CT

**Megan Yamat, RDCS, RCS, FASE**  
University of Chicago Medical Center  
Chicago, IL

## Invited Faculty

**Joel M. Abanilla, MD, FPSE**  
Executive Director  
Philippine Heart Center  
Manila, Philippines

**Juliet J. Balderas, MD**  
Philippine Heart Center  
Manila, Philippines

**Smonporn Boonyaratavej, MD**  
Chulalongkorn University  
Bangkok, Thailand

**Patrick R. Carpo, MD**  
Makati Medical Center  
Makati City, Philippines

**Ronald E. Cuyco, MD, FPSE**  
Philippine Heart Center  
Manila, Philippines

**Aurora Muriel S. Gamponia, MD, FPSE**  
Philippine Heart Center  
Manila, Philippines

**Loewe Go, MD**  
St. Luke's Medical Center  
Quezon City, Philippines

**Mary Ong Go, MD, FPSE**  
Cardinal Santos Medical Center  
Mandaluyong City, Philippines

**Raul D. Jara, MD, FPSE**  
Philippine General Hospital  
Manila, Philippines

**Joyce S. Jumangit, MD, FPSE**  
Philippine Heart Center  
Manila, Philippines

**Jose Donato A. Magno, MD, FPSE**  
Philippine Heart Center  
Manila, Philippines

**Erwan Martanto, MD**  
Padjadjaran University, Indonesia  
West Java, Indonesia

**Ly T. M. Nguyen, MD**  
Hanoi Medical University  
Hanoi, Vietnam

**Lerma Noval, MD**  
Chong Hua Hospital  
Cebu City, Philippines

**Jonnie R. Bote-Nunez, MD, FPSE**  
Philippine Heart Center  
Manila, Philippines

**Aristides A. Panlilio, MD, FPSE, FASE**  
Philippine Heart Center  
Manila, Philippines

**Gregorio G. Rogelio, MD**  
St. Luke's Medical Center  
Quezon City, Philippines

**Romeo J. Santos, MD**  
Philippine Heart Center  
Manila, Philippines

**Amiliana M. Soesanto, MD, PhD**  
National Cardiovascular Center Harapan Kita  
Jakarta, Indonesia

**Myla Gloria S. Supe, MD, FPSE**  
Philippine Heart Center  
Manila, Philippines

**Ru San Tan, MBBS**  
National Heart Center Singapore  
Singapore, Singapore

**Khim Leng Tong, MD, FASE**  
Changi General Hospital  
Singapore, Singapore

# Program Information

## Overview of Echo ASE ASEAN

The aim of Echo ASE ASEAN is to provide cardiovascular practitioners with information on state-of-the-art echocardiographic technology. This international meeting is led by expert faculty from the United States and the countries comprising the ASEAN region and beyond who are leaders in how echocardiography, and other forms of cardiac imaging, can be effectively applied to improve clinical care. The faculty will focus on the latest cardiovascular ultrasound technologies. Case-based learning approaches will be used to highlight new and established uses of echocardiography for diagnosis and guiding management in patients with a broad array of cardiovascular conditions. Topics include: advanced assessment of systolic and diastolic function, 3D/4D imaging, contemporary approaches to valve disease, guidance of interventional procedures, contrast echocardiography, congenital heart disease, ischemic heart disease, pericardial disease, and echo in arrhythmic disorders.

## Target Audience

This course is designed for adult and pediatric cardiologists, cardiovascular surgeons, cardiovascular anesthesiologists, fellows in training, cardiovascular sonographers, internists and intensive care specialists with special interest in clinical cardiology and echocardiography.

## Learning Objectives

Upon completion of this program, participants will be able to:

- Integrate echocardiographic information in clinical decision-making for patients with a broad array of cardiovascular disease.
- Explain advances in echocardiographic assessment of ventricular function and dysfunction.
- Quantitatively assess valve disease and understand the role of echo in valve disease management.
- Comprehensively describe echocardiographic measures of diastolic function and their pitfalls.
- Effectively apply echocardiography in the assessment of patients with ischemic heart disease.
- Identify the role of echocardiography in guiding interventional procedures and in the perioperative setting.
- Integrate echocardiographic assessment of cardiomyopathies and systemic diseases in patient management.
- Define clinical uses of 3D and strain echocardiography.
- Recognize common manifestations of repaired and unrepaired adult congenital heart disease.
- Explain the key role echo plays in the evaluation of patients with arrhythmias, pericardial disease, and cardiac masses.

## Disclaimer

The information provided during this CME activity is for continuing education purposes only and is not meant to substitute for the independent medical judgment of a healthcare provider relative to diagnostic and treatment options of a specific patient's condition.

## Accreditation and Designation

This activity has been planned and implemented in accordance with the Essential Areas and Policies of the Accreditation Council for Continuing Medical Education (ACCME) through the joint providership of the American Society of Echocardiography and the American Society of Echocardiography Education and Research Foundation. The American Society of Echocardiography is accredited by the ACCME to provide continuing medical education for physicians.

The American Society of Echocardiography is accredited by the Accreditation Council for Continuing Medical Education to provide continuing medical education for physicians.

The American Society of Echocardiography designates this live activity for a maximum of **20.5 AMA PRA Category 1 Credits™**. Physicians should claim only the credit commensurate with the extent of their participation in the activity. Successful completion of this CME activity enables the participant to earn up to **20.5 MOC points in the American Board of Internal Medicine's (ABIM) Maintenance of Certification (MOC) program and/or The American Board of Anesthesiology® (ABA) Maintenance of Certification in Anesthesiology Program® or MOCA®**. Participants will earn MOC points equivalent to the amount of CME credits claimed for the activity. It is ASE's responsibility to submit participant completion information to ACCME for the purpose of granting ABA MOCA and/or ABIM MOC points.



*Maintenance of Certification in Anesthesiology Program® and MOCA® are registered certification marks of the American Board of Anesthesiology®. MOCA 2.0® is a trademark of the American Board of Anesthesiology®.*

## Daily breakdown of CME credits:

**Thursday, March 22, 2018** = 7.5 hours

**Friday, March 23, 2018** = 7.5 hours

**Saturday, March 24, 2018** = 5.5 hours

The ACCME and the European Board of Accreditation in Cardiology (EBAC) recognize each other's accreditation systems as substantially equivalent. To obtain EBAC credit for participation in this activity, submit evidence of participation directly to EBAC ([www.ebac-cme.org](http://www.ebac-cme.org)).

The European Union of Medical Specialists (UEMS)-European Accreditation Council for Continuing Medical Education (EACCME) has an agreement of mutual recognition of continuing medical education (CME) credit with the American Medical Association (AMA). European physicians interested in converting AMA PRA Category 1 Credit™ into European CME credit (ECMEC) should contact the UEMS ([www.uems.eu](http://www.uems.eu)).

ARDMS, CCI, and Sonography Canada recognize ASE's certificates and have agreed to honor the credit hours toward their registry requirements for sonographers.

All or a portion of this educational activity may meet the CME requirement for IAC Echocardiography accreditation.

This activity is eligible for Section 1 credits in the Royal College of Physicians and Surgeons of Canada's Maintenance of Certification (MOC) Program. Participants must log into MAINPORT to claim this activity.

## Disclosure

ASE is committed to ensuring that its educational mission, and all sponsored educational programs are not influenced by the special interests of any corporation or individual, and its mandate is to retain only those speakers whose financial interests can be effectively resolved to maintain the goals and educational integrity of the program. While a monetary or professional affiliation with a corporation does not necessarily influence a speaker's presentation, the Essential Areas and policies of the ACCME require that any relationship that could possibly conflict with the educational value of the program be resolved prior to the educational session and disclosed to the audience. In accordance with these policies, ASE implemented mechanisms prior to the planning and implementation of this CME activity to identify and resolve conflicts of interest for all individuals in a position to control content. Disclosure information is referenced and can be found beginning on page 14 of this program.

## Commercial Support Disclosure

Educational Grants: This activity is supported in part by educational grants from Lantheus Medical Imaging, the National Board of Echocardiography, Inc., and Trust Bio-sonics.

## How to Obtain CME

To claim your CME for ASE Echo ASEAN, please follow the steps below using your Mozilla Firefox, Google Chrome or Safari browser. Internet Explorer will not work. The deadline to claim credit is **April 26, 2018**.

### ASE Members:

1. Go to [ASEcho.org](http://ASEcho.org) and log in to the Member Portal with your username (email) and password.
  - a. If you forget your password, simply click "Retrieve" under the login.
2. Click on ASEUniversity. This will take you directly to your ASEUniversity account.

### Nonmembers:

1. Go to [ASEUniversity.org](http://ASEUniversity.org).
2. Log into your existing account or create a new one.

### To Claim Credit:

3. On the ASEUniversity homepage, click My Account at the top right of the page.
4. Under My Account, click Add Access Code on the left sidebar and enter the code, "3rdASEAN"
5. Verify your registration information. Please be sure to use the same information that you used to register for the event.
6. Once verified, click CE Information tab and Take Exam button to claim your CME credit. CME credits are not earned until the entire evaluation has been completed.
7. Your certificate will be available for immediate download and can also be found under My Account in the My Transcripts.

Remember to enter your ABIM and/or ABA number and birthdate if you choose to have MOC and/or MOCA points for this meeting submitted to ABIM and/or ABA. There is a space for this information on the first page of the evaluation.

## Accommodations and Lodging Information

The Conrad Manila Hotel is located on the Seaside Boulevard corner of Coral Way atop the Mall of Asia Complex, Pasay City, 1300, Manila, Philippines. Your stay includes a daily buffet breakfast and in-room internet.

The Conrad Manila is positioned atop S Maison, a high-end retail complex on the edge of Manila Bay. It is a striking hotel offering a peaceful escape from the hustle and bustle of Makati, while being only a short 15 minute drive away from the Manila Ninoy Aquino International Airport. You will enjoy easy access to a variety of shopping, dining, recreation, and local attractions.

Manila, the capital of the Philippines, is located on the eastern shores of the Manila Bay in one of the finest harbors in the country. Here you will find a mix of Spanish colonial architecture with modern skyscrapers. Take a walking tour of the historic 64-hectare stone citadel, Intramuros (founded by the Spanish in 1571), try the popular Filipino desert, halo halo, explore one of the many museums located throughout the city, or just simply marvel over a beautiful sunset from the Conrad Manila's waterfront lounge.

# Attendee Information and Regulations

## Registration Desk Location and Hours

The ASE Registration desk is located outside Forbes Ballroom, and staffed during the following hours:

Thursday, March 22, 2018 . . . . . 6:45 AM – 5:30 PM  
Friday, March 23, 2018 . . . . . 7:00 AM – 5:30 PM  
Saturday, March 24, 2018 . . . . . 7:00 AM – 3:00 PM

## Food Functions

ASE will provide morning coffee breaks, breakfast, lunch, and afternoon coffee breaks for registered attendees. Please refer to the program schedule for the times of all meal functions. The Conrad Manila offers guests a variety of dining options. Please see below for more details.

## Onsite Restaurant Options

**China Blue by Jereme Leung:** China Blue offers a modern interpretation of traditional Chinese cuisine, tailored by celebrity master chef Jereme Leung. Ideal for business lunches or special occasions with floor-to-ceiling glass windows offering views of the Manila Bay on the horizon.

**Brasserie on 3:** An all-day dining restaurant serving an extensive buffet selection at breakfast and an à la carte menu for lunch and dinner. Organic, local, and sustainable ingredients take center stage while an open kitchen and live cooking stations add to the vibrant atmosphere. Enjoy both indoor and outdoor dining.

**C Lounge:** During the day, unwind in the laid back C Lounge, where you can enjoy afternoon tea selections with freshly brewed coffee and specialty blends. As the day winds down and the music is turned up, treat yourself to one of the bar's signature cocktails while enjoying panoramic sunset bay views.

**Sails Pool Bar:** Stretch out poolside on a plush lounge, and relax with a drink and a light snack in our covered, outdoor pool bar. Gaze out over the sparkling water as you savor your favorite cocktail or cool down with a freshly prepared juice or smoothie.

**Bru Coffee Bar:** This coffee bar and boutique chocolatier showcases a tempting selection of hand-crafted pastry items and artisan confectionery. Enjoy a light and hearty snack delightfully paired with specialty tea or fair trade coffee.

## Mobile Device Use

We encourage you to use your mobile device to download the new ASE Courses app. After you have downloaded the app, you will have access to the entire meeting program at your fingertips. You can also use the app to ask questions during the sessions you attend. Please remember to turn your mobile device to silent or vibrate mode. Search "ASE Courses" in the Google Play and Apple Stores to download.

**Download the ASE Live Courses app for Echo ASE ASEAN information at your fingertips**

## Internet Access

Attendees of the course receive complimentary wireless internet in their guest rooms and meeting area area of the Conrad Manila.

## Safety

Audience seating is on a first-come, first-served basis. According to fire code, a session must be closed if the room fills to capacity. Inappropriate behavior or undesirable conduct, including, but not limited to, verbal or physical abuse, whether threatened or performed, will not be permitted or tolerated. You must wear your name badge at all times when attending the session or events.

## Photography/AV Policy

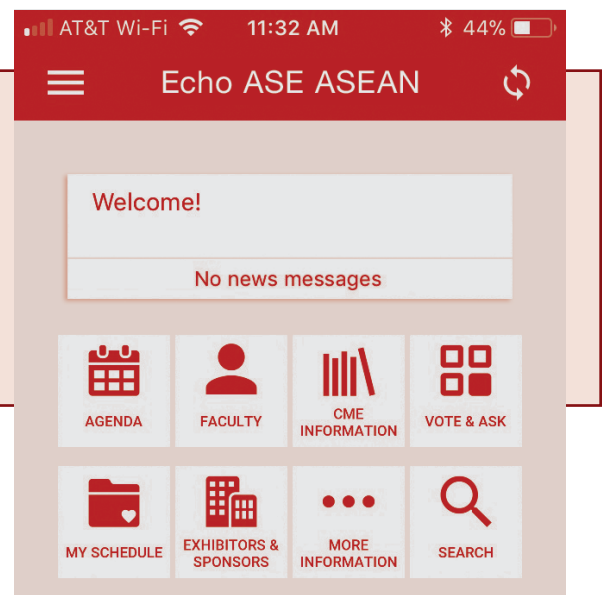
No person may record any portion of the Echo ASE ASEAN course, either by video, still or digital photography, audio or any other recording or reproduction mechanism. This includes recording of presentations and supporting audio visual materials.

Taking photos of, or recording the content of, presentation slides is also prohibited and is considered intellectual piracy. Attendees who ignore this policy will be asked to leave the educational session and are at risk of losing their name badge and attendance privileges.

Photographs taken for the purpose of sharing on social media is allowed, but should avoid showing presentation slides. Please use #EchoASEAN when posting on social media. ASE reserves the rights to all recordings or reproductions at ASE meetings. Please be aware that during the Echo ASE ASEAN course, attendees, vendors, guests, and exhibitors may be photographed or videotaped by ASE staff capturing the event. Some of these photographs or videos may be displayed by ASE in future publication or other materials. By virtue of your attendance, you agree to allow ASE to use photographs of you in its promotional materials.

## Children

ASE does not offer childcare services. Due to limited seating capacity and the highly technical nature of this program, children are not allowed to attend the educational session.



# Schedule of Events

## Thursday, March 22, 2018

6:45 AM **Registration and Breakfast**  
Outside Forbes Ballroom

7:45 AM **Welcome and Introduction**  
Forbes Ballroom  
*J. Thomas*

### Assessment of Cardiac Function

Forbes Ballroom  
*Moderators: J. Thomas, E. Tucay*

8:00 AM **The Physiology of Systole**  
*J. Thomas*

8:20 AM **New Approaches to Systolic Function: 4D**  
*R. Lang*

8:40 AM **New Approaches to Systolic Function: Strain Imaging**  
*J. Thomas*

9:00 AM **Evaluation of Right Ventricular Function and Pulmonary Artery Pressure**  
*E. Tucay*

9:20 AM **The Physiology of Diastole**  
*G. Scalia*

9:40 AM **Echocardiographic Assessment of Diastolic Function and Filling Pressure**  
*T. Ryan*

10:00 AM **Question and Answer**  
*R. Lang, T. Ryan, G. Scalia, J. Thomas, E. Tucay*

10:20 AM **Refreshment Break & Visit Exhibits/Posters**  
Taft Ballroom

### Valvular Heart Disease Basics

Forbes Ballroom  
*Moderators: K. Poh, L. Sugeng*

10:50 AM **Quantification of Aortic Stenosis: Using the Guidelines to Time Intervention**  
*K. Poh*

11:10 AM **Quantification of Aortic and Mitral Regurgitation: Update from the Guidelines**  
*E. Martanto*

11:30 AM **Diagnostic Difficulties in Mutivalvular Disease**  
*L. Sugeng*

11:50 AM **Question and Answer**  
*E. Martanto, K. Poh, L. Sugeng*

12:10 PM **Science & Technology Theater**  
Forbes Ballroom

### Advanced Topics I: Cardiac and Valve Function

Forbes Ballroom  
*Moderators: R. Lang, E. Martanto*

1:20 PM **Cardiotoxic Effects of Chemotherapeutic Drugs**  
*E. Martanto*

1:40 PM **Cardiac Hypertrophy: Differentiate Disease from Athlete**  
*K. Tong*

2:00 PM **What Do Electrophysiologists Want to Know from Echocardiographers Before, During & After Cardiac Resynchronization Therapy?**  
*M. Go*

2:20 PM **Evaluation of Patients with LVADs and Percutaneous Support Devices**  
*G. Scalia*

2:40 PM **Update in Rheumatic Mitral Stenosis: Which Scoring System to Use**  
*R. Santos*

3:00 PM **Assessment of Tricuspid and Pulmonic Valve Disease: Importance of 3D**  
*R. Lang*

3:20 PM **Prosthetic Valve Function and Dysfunction**  
*L. Sugeng*

3:40 PM **Question and Answer**  
*M. Go, R. Lang, E. Martanto, R. Santos, G. Scalia, L. Sugeng, K. Tong*

### Basic Topics I: Cardiac and Valve Function

Forbes Ballroom  
*Moderators: B. Anderson, S. Boonyaratavej*

1:20 PM **Strain Basics: How to Start in Your Lab**  
*B. Anderson*

1:40 PM **3D Basics: How to Start in Your Lab**  
*M. Yamat*

2:00 PM **Assessment of Diastolic Function: What Must be Acquired?**  
*M. Supe*

2:20 PM **Moving Right Ventricular Assessment Beyond the Eyeball**  
*A. Soesanto*

2:40 PM **Quantitative Assessment of Mitral and Aortic Stenosis: Pitfalls and Tips**  
*B. Anderson*

3:00 PM **Quantitation of Mitral Regurgitation: Doing Proximal Isovelocity Surface Area the Right Way**  
*S. Boonyaratavej*

# Schedule of Events

3:20 PM	<b>Assessment of Prosthetic Valves: What are the Key Views and Variables?</b> <i>T. Ryan</i>
3:40 PM	<b>Question and Answer</b> <i>B. Anderson, S. Boonyaratavej, M. Supe, T. Ryan, A. Soesanto, M. Yamat</i>
4:00 PM	<b>Refreshment Break &amp; Visit Exhibits/Posters</b> Taft Ballroom
<b>Illustrative Case Presentations</b> Forbes Ballroom <i>Moderator: L. Sugeng</i>	
4:30 PM	<b>Illustrative Case Presentations</b> <i>B. Anderson, R. Jara, T. Ryan, A. Soesanto, R. Tan</i>
5:30 PM	<b>ADJOURN</b>

## Friday, March 23, 2018

7:00 AM	<b>Registration and Breakfast</b> Outside Forbes Ballroom
<b>Ischemic Heart Disease</b> Forbes Ballroom <i>Moderators: T. Ryan, K. Tong</i>	
8:00 AM	<b>Role of Contrast Agents to Enhance Wall Motion and Doppler Signals</b> <i>K. Tong</i>
8:20 AM	<b>Stress Echocardiography to Assess Coronary Artery Disease</b> <i>J. Jumangit</i>
8:40 AM	<b>Complications of Acute Myocardial Infarction</b> <i>G. Scalia</i>
9:00 AM	<b>Chronic Ischemic Cardiomyopathy: Role of Functional Mitral Regurgitation</b> <i>T. Ryan</i>
9:20 AM	<b>Question and Answer</b> <i>J. Jumangit, T. Ryan, G. Scalia, K. Tong</i>
9:40 AM	<b>Refreshment Break &amp; Visit Exhibits/Posters</b> Taft Ballroom
<b>Congenital and Interventional Echo</b> Forbes Ballroom <i>Moderators: J. Nunez, G. Scalia</i>	
10:10 AM	<b>Unrepaired Congenital Heart Disease: What You Must Never Miss</b> <i>T. Ryan</i>
10:30 AM	<b>Repaired Congenital Heart Disease: What Did They Do and How is It Doing?</b> <i>J. Balderas</i>

10:50 AM	<b>Introduction to Interventional Echocardiography</b> <i>R. Lang</i>
11:10 AM	<b>What's New in the Evaluation of Pericardial Disease?</b> <i>T. Ryan</i>
11:30 AM	<b>Question and Answer</b> <i>J. Balderas, R. Lang, T. Ryan, G. Scalia</i>
11:50 AM	<b>Science &amp; Technology Theater</b> Forbes Ballroom
<b>Advanced Topics II: Clinical Topics</b> Forbes Ballroom <i>Moderators: P. Carpo, R. Jara</i>	

1:00 PM	<b>Stress Echo in Nonischemia Indications</b> <i>K. Poh</i>
1:20 PM	<b>Echo in Rheumatologic and Connective Tissue Disease</b> <i>G. Scalia</i>
1:40 PM	<b>TEE and TTE Assessment of Aortic Disease</b> <i>L. Sugeng</i>
2:00 PM	<b>Complex Cyanotic Congenital Disease: When is it Too Late to Intervene?</b> <i>A. Gamponia</i>
2:20 PM	<b>Atrial Septal Closure and Left Atrial Appendage Occlusion: Indications and Guidance</b> <i>A. Panlilio</i>
2:40 PM	<b>Guidance of Mitral and Tricuspid Interventions</b> <i>J. Thomas</i>

<b>Advanced Topics II: Role of Multimodality Imaging</b> Forbes Ballroom <i>Moderators: R. Jara, L. Noval</i>	
3:00 PM	<b>MRI Tissue Characterization: A Primer for the Non-MRI Cardiologist</b> <i>R. Tan</i>
3:20 PM	<b>Advances in MRI: When it is Needed in Ischemia, Heart Failure, and Valve Disease</b> <i>R. Tan</i>
3:40 PM	<b>Question and Answer</b> <i>R. Jara, L. Noval, R. Tan</i>
4:00 PM	<b>Refreshment Break &amp; Visit Exhibits/Posters</b> Taft Ballroom
<b>Basic Topics II: Assorted Topics</b> Forbes Ballroom <i>Moderators: D. Magno, M. Yamat</i>	
1:00 PM	<b>Tips and Tricks for Assessing Congenital Heart Disease</b> <i>B. Anderson</i>



# Schedule of Events

1:20 PM	<b>Stress Echo Performance: When is Contrast Needed?</b> <i>M. Yamat</i>	8:40 AM	<b>Imaging in Pulmonary Hypertension and Cor Pulmonale</b> <i>L. Sugeng</i>
1:40 PM	<b>Assessment of Chest Pain in the Emergency Room</b> <i>R. Cuyco</i>	9:00 AM	<b>The Many Faces of Endocarditis: When to Intervene</b> <i>K. Poh</i>
2:00 PM	<b>Assessment of Hemodynamics: Can Echo Replace the Pulmonary Artery Catheter</b> <i>G. Scalia</i>	9:20 AM	<b>TAVR 2018: Imaging Before, During, and After</b> <i>L. Sugeng</i>
2:20 PM	<b>Hypertrophic Cardiomyopathy: Basic Assessment and Provocation of Obstruction</b> <i>L. Nguyen</i>	9:40 AM	<b>Question and Answer</b> <i>L. Nguyen, K. Poh, G. Scalia, L. Sugeng, J. Thomas</i>
2:40 PM	<b>Point of Care Echo in the Hospital and Beyond: Can it Screen for Rheumatic Heart Disease?</b> <i>D. Magno</i>	10:00 AM	<b>Refreshment Break &amp; Visit Exhibits/Posters</b> Taft Ballroom
3:00 PM	<b>Evaluating and Scoring the Rheumatic Mitral Valve in 2D and 3D</b> <i>L. Sugeng</i>	<b>Advanced Clinical Topics III: Clinical Topics</b> Forbes Ballroom <i>Moderators: J. Abanilla, R. Lang</i>	
3:20 PM	<b>Fact or Fiction: Common Echo Myths Exposed</b> <i>B. Anderson</i>	10:30 AM	<b>Takotsubo Cardiomyopathy: Pathophysiology and Assessment</b> <i>R. Lang</i>
3:40 PM	<b>Question and Answer</b> <i>B. Anderson, R. Cuyco, D. Magno, L. Nguyen, G. Scalia, L. Sugeng, M. Yamat</i>	10:50 AM	<b>Intra-operative Echo: When to Go Back On Pump</b> <i>G. Rogelio</i>
4:00 PM	<b>Refreshment Break &amp; Visit Exhibits/Posters</b> Taft Ballroom	<b>TEE and Intraprocedural Case Presentations</b> Forbes Ballroom <i>Moderator: J. Thomas</i>	
<b>Illustrative Case Presentations</b> Forbes Ballroom <i>Moderator: G. Scalia</i>		11:10 AM	<b>TEE and Intraprocedural Case Presentations</b> <i>R. Lang, K. Poh, G. Rogelio, G. Scalia, E. Tucay</i>
4:30 PM	<b>Illustrative Case Presentations</b> <i>J. Jumangit, L. Nguyen, K. Tong, M. Yamat</i>	12:10 PM	<b>Question and Answer</b> <i>J. Abanilla, R. Lang, K. Poh, G. Rogelio, G. Scalia, J. Thomas, E. Tucay</i>
5:30 PM	<b>ADJOURN</b>	12:30 PM	<b>Lunch &amp; Visit Exhibits</b> Outside Forbes Ballroom
<b>Saturday, March 24, 2018</b>		<b>3D and Strain Live Imaging Workshop</b> Forbes Ballroom <i>Moderator: E. Tucay</i> <i>B. Anderson, L. Go, R. Lang, L. Sugeng, J. Thomas, M. Yamat</i>	
7:00 AM	<b>Registration and Breakfast</b> Outside Forbes Ballroom	3:00 PM	<b>ADJOURN</b>
<b>Miscellaneous Topics</b> Forbes Ballroom			
8:00 AM	<b>Assessment of Hypertrophic Cardiomyopathy: When and How to Intervene</b> <i>J. Thomas</i>		
8:20 AM	<b>Restrictive and Infiltrative Cardiomyopathies</b> <i>G. Scalia</i>		



With hearts so  
**strongly  
connected**

shouldn't cardiac  
solutions be, too?



At Siemens Healthineers, our ultrasound technology is supporting new levels of automation, higher workflow efficiencies, and improved accuracy — so you can focus on caring for your patients.

Let's have a heart to heart talk at the upcoming ECHO ASEAN ASE!

Join Siemens Healthineers' lunch symposium and clinical presentation by **Dr. Lissa Sugeng** on Thursday, 22nd of March 2018 at 12:00 noon.

\*This activity is not a part of the official Echo ASE ASEAN as planned by the Program Committee, or in any way endorsed or affiliated with ASE.

**SIEMENS**  
Healthineers

3rd Echo ASE ASEAN Lunch Symposium

## IMPACT OF 3DE: CHANGING PERSPECTIVE

Keynote speaker: **Dr. Lissa Sugeng**  
Associate Professor of Medicine (Cardiology)  
Yale School of Medicine

23 March 2018, 12 – 1 pm

Venue: Forbes Ballroom, Conrad Manila Hotel

Disclaimer: This activity is not a part of the official Echo ASE ASEAN as planned by the Programme Committee, or in any way endorsed or affiliated with ASE.

 Hitachi, Ltd.

[www.hitachi-medical.com.sg](http://www.hitachi-medical.com.sg)

Innovating Healthcare, Embracing the Future

# Exhibit Information

## Exhibit Location and Hours

Exhibits are located in the Taft Ballroom during the dates and hours listed below:

Thursday, March 22, 2018 . . . . .	6:45 AM – 5:30 PM
Friday, March 23, 2018 . . . . .	7:00 AM – 5:30 PM
Saturday, March 24, 2018 . . . . .	7:00 AM – 3:00 PM

## Exhibitor Descriptions



**Bayer Philippines Inc.**  
29th Flr. Menarco Tower  
Lot 8 Block 5, 32nd St. BGC  
Taguig City  
Philippines  
548 5800  
[www.bayer.com](http://www.bayer.com)

Bayer is a global enterprise with core competencies in the Life Science fields of health care and agriculture. Its products and services are designed to benefit people and improve their quality of life. At the same time, the Group aims to create value through innovation, growth and high earning power. Bayer is committed to the principles of sustainable development and to its social and ethical responsibilities as a corporate citizen.



**Boehringer Ingelheim**  
23rd Floor Citibank Tower  
8741 Paseo de Roxas, Salcedo Village  
Makati City 1227  
Philippines  
+63 (2) 867-0800  
[www.boehringer-ingelheim.ph](http://www.boehringer-ingelheim.ph)

Boehringer Ingelheim (Philippines), Inc. or BIPHI is one of the leading pharmaceutical companies in the Philippines. It markets human and animal health products noted for their efficacy and reasonable cost; many of which are among the leaders in their categories. BIPHI enters the 21st century strongly positioned for further growth. New products from our world-renowned international research and development facilities ensure that we constantly have pharmaceuticals that help the Philippines master its near and long-term health challenges.



**Corbridge Group Phils, Inc.**  
5th Floor Jafer Building  
118 West Avenue  
Quezon City  
Philippines  
63(2)-4260110

CORBRIDGE GROUP PHILS., INC. is one of the fastest growing pharmaceutical companies in the Philippines focusing in the management of Diabetes and Cardiovascular Diseases.



**General Electric Philippines Inc.**  
9th Floor, Net Cube Building 30th St  
corner 3rd Avenue Crescent Park  
West Bonifacio Global City  
Taguig City 1630  
Philippines  
877 7000  
[www3.gehealthcare.com.sg](http://www3.gehealthcare.com.sg)

Harnessing data and analytics across hardware, software, and biotech, GE Healthcare is the \$19 billion healthcare business of GE (NYSE: GE). As a leading provider of medical imaging equipment, with a track record of more than 100 years in the industry and more than 50,000 employees across 100 countries, we transform healthcare by delivering better outcomes for providers and patients. Follow us on Facebook, LinkedIn, Twitter and The Pulse for latest news. Visit [www.gehealthcare.com](http://www.gehealthcare.com) for more.



**Hitachi Medical Systems Singapore**  
7 Tampines Grande Hitachi Square 04-01  
Singapore, 528736  
Singapore  
(65) 6602 0110  
[www.hitachi-medical.com.sg](http://www.hitachi-medical.com.sg)

Hitachi Medical is dedicated to improving healthcare and medical treatment by supplying high quality medical imaging solutions.



# Exhibit Information



**Novartis Healthcare Philippines**  
5F Asian Reinsurance Building,  
Salcedo corner Gamboa Street, Legaspi Village  
Makati City 1229  
Philippines  
02-3687777  
[www.novartis.com](http://www.novartis.com)

Novartis is a global healthcare company based in Switzerland that provides solutions to address the evolving needs of patients worldwide.



**Servier Philippines, Inc.**  
#2 Orion Corner Mercedes Sts., Bel-Air Village  
Makati City, 1209 Philippines  
(632) 897-8990  
[www.servier.com](http://www.servier.com)

Every Script for a Servier product is an Investment to Medical Research and Education.



healthcare within reach

**Nyquist Imaging Systems Inc.**  
Bell Kenz Tower, 127 Malakas St City, Quezon City  
1100 Metro Manila  
Philippines  
434-1142

Nyquist Imaging Systems Inc. was established in 2010 to provide hospitals and diagnostic laboratories with quality cardiac ultrasound systems at reasonable cost. We recently tied up with Mindray to strengthen our range of products and services to make high quality diagnostic cardiovascular ultrasound available to the majority of patients.



**Philips Electronics Singapore Pte Ltd**  
622 Lorong 1 Toa Payoh, Level 3  
Singapore, 319762  
Singapore  
+6562068000  
[www.philips.com.sg/healthcare](http://www.philips.com.sg/healthcare)

Innovation. Transformation. Collaboration. That's what inspires these health systems to partner with us. Industry-leading technologies coupled with an approach that forges new paths in care delivery. A relentless pursuit to make life better. A vision of more seamless care that breaks down boundaries and reduces complexity. This is what drives us. This is Philips.



**Siemens Healthineers**  
16/F, Salcedo Tower,  
169 H.V. Dela Costa St. Salcedo Village  
Makati City 1227  
Philippines  
(632) 897-8990  
[www.siemens.com/healthineers](http://www.siemens.com/healthineers)

Siemens Healthineers is a leader in medical technology enabling healthcare providers worldwide to increase value by empowering them on their journey towards expanding precision medicine, transforming care delivery, improving patient experience and digitalizing healthcare. Siemens Healthineers is constantly innovating its portfolio of products and services in its core areas of diagnostic and therapeutic imaging and in laboratory diagnostics and molecular medicine.



**Unilab, Inc. - LRI Therapharma**  
66 United St.  
Mandaluyong City 1550  
Philippines  
02-855-1255  
[www.lri-therapharma.com.ph](http://www.lri-therapharma.com.ph)

LRI-Therapharma is one of Unilab's product divisions with over 40 fighting brands for diabetes, hypertension and other cardio-metabolic diseases.

# Poster Presentations

## Case Series of Pacemaker Lead Endocarditis at Philippine Heart Center

*Mark Donn D. Andres, Emily Mae Yap, Lucky Cuenza. Philippine Heart Center, Quezon City, Philippines.*

## Service Provision of Transthoracic Echocardiography in an Open Access Referral System – Can We Do Better?

*Koh Yoke Leng, Sherlyn Chua, Lim Mui Ling, Vasudha Sankar, Lin Shu Hui, Goh Cheng Huang, Cheryl Tan Pin Ru, Punitha Arasaratnam. Ng Teng Fong General Hospital, Singapore, Singapore.*

## The Importance of Contrast Echocardiography in Hypertrophic Cardiomyopathy

*Namra Butt<sup>1</sup>, Faraz Kazmi<sup>1</sup>, Adib Chaus<sup>1</sup>, Nishant Patel<sup>1</sup>, Pavan Gupta<sup>2</sup>. <sup>1</sup>Advocate Lutheran General Hospital, Park Ridge, Illinois, United States; <sup>2</sup>Chicago College of Osteopathic Medicine, Downers Grove, Illinois, United States.*

## The Effect of Percutaneous Transvenous Mitral Commissurotomy on the Diastolic Function of Patients with Rheumatic Mitral Stenosis

*Cashmere Malaine P. Cabilgon, Edwin S. Tucay. Philippine Heart Center, Quezon City, Philippines.*

## D-Transposition of Great Arteries. Life is All about Connecting: A Case Report

*Rayzen V. Canono, Jose Donato A. Magno, Rachelle Angeli R. Ninalga, Mario Joselito D. Garcia, Harold C. Sunga, Richard Q. Amansec. Angeles University Foundation Medical Center, Angeles City, Philippines.*

## Fending off the Fatal Fungus: Timely Diagnosis and Treatment of Afebrile Fungal Infective Endocarditis

*Rayzen V. Canono, Jose Donato A. Magno, Edgardo S. Timbol. Angeles University Foundation Medical Center, Angeles City, Philippines.*

## Acute Thrombosis of Bioprosthetic Mitral Valve Secondary to Low Cardiac Output from VA-ECMO

*Antonio Christophy, Ricardo Kosturakis, Rajeev Mohan, Christopher Suhar, Jamie Felzer. Deborah Heart and Lung Center, Browns Mills, New Jersey, United States.*

## Improvement of Mitral Annular Displacement and its Impact on Patients with Severe Aortic Stenosis after Transcatheter Aortic Valve Implantation: A Philippine Experience

*Alinaya A. Cordero, Ava Kaye R. Tiu, Ryan S. Mambulao, Marlon C. Loquias, Sue-Ann R. Locnen, Ofelia N. Valencia, Fabio Enrique B. Posas. Heart Institute, St. Luke's Medical Center – Global City, Taguig City, Philippines.*

## Physiologic Effects of Exercise on the Right Side of the Heart as Evaluated Immediately after Stress Echocardiogram among Non-Professional Athletes

*Joseph Raymond Cuaresma, Anthony King, Jr., Valerie Zarza-Geron. Makati Medical Center, Makati, Philippines.*

## Bronchogenic Cyst Presenting as Right Atrial Mass in a 47-Year old Filipino Female

*Unica Adah Francisco, Maita S. Senadrin, Lorenzo Rommel G. Carino, Ryan S. Mambulao, Ma. Corazon C. Manlulu, Richard Henry Tiongco II. St. Luke's Medical Center – Global City, Taguig, Philippines.*

## Multimodality Imaging Approach to the Diagnosis of Primary Pericardial Malignant Mesothelioma with Local Cardiac Chamber Spread: A Case Report

*Arthur Bagadiang, Ferdinand Gerodias, Jr., Rose Cabarles-Dizon. HB Calleja Heart and Vascular Institute St. Luke's Medical Center, Quezon City, Philippines.*

## Usage of Longitudinal Strain Analysis in Monitoring And Decision Making in Weaning Vein–Arterial Extracorporeal membrane oxygenation (V-A ECMO) in Cardiogenic Shock

*M. Najmi Hakim, Hardy Kwalian Adam Kwa, Amir Ikhwan, Dil Kumar Marimuthu. National Heart Institute, Kuala Lumpur, Malaysia.*

## Mistaken Identity: A Case Report of Simultaneous Right Atrial Myxoma and Bilateral Pulmonary Artery Inflammatory Myofibroblastic Tumor

*Jhoanna G. Marcelo<sup>1</sup>, Frederick S. Gabriel<sup>2,3</sup>, Jose Donato A. Magno<sup>1,2,4</sup>, Randell S. Arias<sup>1</sup>, Laamie N. Cale-Subia<sup>1</sup>. <sup>1</sup>Philippine Heart Center, Quezon City, Philippines; <sup>2</sup>Angeles University Foundation Medical Center, Pampanga, Philippines; <sup>3</sup>Delos Santos Hospital, Quezon City, Philippines; <sup>4</sup>Philippine General Hospital, Manila, Philippines.*

## “Interesting Facts on the Sock.” Aortic and Pulmonic Valve Endocarditis Secondary to Ruptured Coronary Sinus of Valsalva Aneurysm: A Case Report

*Joan R. Montehermoso, Mildred Sayco-Peñas. Jose Reyes Memorial Medical Center, Manila, Philippines.*

## The Obesity Paradox: Improved Survival in Obese Compared to Non-Obese Patients with Medically-Managed Severe Aortic Stenosis and Preserved Left Ventricular Ejection Fraction

*Nicholas Nqiam<sup>1</sup>, Nicholas Chew<sup>1</sup>, Rebecca Teng<sup>1</sup>, Benjamin YQ Tan<sup>1</sup>, Hui Wen Sim<sup>1,2</sup>, William KF Kong<sup>1,2</sup>, Tiong-Cheng Yeo<sup>1,2</sup>, Kian-Keong Poh<sup>1,2</sup>. <sup>1</sup>National University Health System, Singapore, Singapore; <sup>2</sup>National University Heart Centre, Singapore, Singapore.*

## Common Atrium and Single Ventricle Associated with Unusual Heterotaxy Syndrome: A Rare Complex Congenital Heart Disease in a 19-Year Old Filipino Patient

*Madeleine P. Perocho, Jason Roy M. Bacani. Philippine Heart Center, Quezon City, Philippines.*

## Myofibroblastic Sarcoma with Myxoid Features Mimicking Pulmonary Embolism

*Maria Jhessica A. Pecson, Leilani G. Adama. Philippine Heart Center, Quezon City, Philippines.*

## Prosthetic Mitral Valve Endocarditis with Concomitant Cerebral Embolism

*Maria Jhessica A. Pecson, Ma Consolacion D. Torres. Philippine Heart Center, Quezon City, Philippines.*

## Pulmonary Artery and Pulmonic Valve Vegetations in a Young Pregnant Filipino with Patent Ductus Arteriosus

*Jezreel L. Taquiso, Valerie R. Ramiro, Stephanie Martha O. Obillos, Charlene F. Agustin, Jose Donato A. Magno, Eric Oliver D. Sison. University of the Philippines – Philippine General Hospital, Manila, Philippines.*

## Left Ventricular Free Wall Rupture with Pseudoaneurysm Formation from Penetrating Cardiac Injury

*Janine Paola T. Rangel, Warren S. Rondilla. Philippine Heart Center, Quezon City, Philippines.*

## Incidence and Predictors of Tricuspid Regurgitation Determined by Two-Dimensional and Three-Dimensional Echocardiography after Permanent Pacemaker Implantation

*Janine Paola T. Rangel, Viannely Berwyn F. Flores. Philippine Heart Center, Quezon City, Philippines.*

## CHA2DS2-VASc Scores Predict All-Cause Mortality and Congestive Cardiac Failure Admissions in Patients with Moderate to Severe Aortic Stenosis

*Zest Yi-Yen Ang<sup>1</sup>, Ching-Hui Sia<sup>2</sup>, Hui-Wen Sim<sup>2</sup>, Nicholas Jinghao Ngiam<sup>3</sup>, Benjamin Yong-Qiang Tan<sup>3</sup>, Tiong-Cheng Yeo<sup>1,2</sup>, William Kok-Fai Kong<sup>1,2</sup>, Kian-Keong Poh<sup>1,2</sup>. <sup>1</sup>Yong Loo Lin School of Medicine, National University of Singapore, Singapore; <sup>2</sup>National University Heart Centre, Singapore, Singapore; <sup>3</sup>National University Health System, Singapore, Singapore.*

## When More Isn't Better: A Quadricuspal Aortic Valve Mimicking Acute Coronary Syndrome

*Debbie Lynn A. Udarbe, Jose Donato A. Magno, Edgar Wilson G. Timbol, Jose Eduardo D. Duya. Angeles University Foundation Medical Center, Angeles City, Philippines.*

## The Value of Global Longitudinal Strain (GLS) and Global Circumferential Strain (GCS) as a Predictor of Outcomes after Mitral Valve Surgery

*Melinda A. Vencio, Edwin S. Tucay, Romeo J. Santos. Philippine Heart Center, Quezon City, Philippines.*

## Contrast Enhanced Ultrasound (CEUS) of the Entire Heart with Investigational Contrast Bubble and Assessment with Commercially Available Speckle Tracking Strain Imaging Software Demonstrates Accurate Cardiac Function Measurements

*Bruno Cotter<sup>1</sup>, Monet Strachan<sup>1</sup>, Anthony DeMaria<sup>1</sup>, Joan Main<sup>2</sup>, Chung-Hsin Wang<sup>2</sup>. <sup>1</sup>University of California San Diego, San Diego, California; <sup>2</sup>Trust Bio-Sonics, Zhubei City, Hsinchu County, Taiwan.*

## The Ominous Duo: Left Ventricular Non-Compaction in an Adult with Patent Ductus Arteriosus

*Emily Mae Yap, Edward Nino Gacrama, Ana Beatriz Medrano. Philippine Heart Center, Quezon City, Philippines.*

# Faculty Disclosures

**The following faculty members do not have any relationships with industry/commercial supporters to disclose:**

Joel Abanilla, MD, FPSE  
Bonita Anderson, MAPPLSC, DMU, AMS, FASE, ACS  
Smonporn Boonyaratavej, MD  
Jonnie Bote-Nunez, MD, FPSE  
Patrick Carpo, MD  
Ronald Cuyco, MD, FPSE  
Aurora Muriel Gamponia, MD, FPSE  
Loewe Go, MD  
Raul Jara, MD, FPSE  
Joyce Jumangit, MD, FPSE  
Erwan Martanto, MD  
Ly T. M. Nguyen, MD  
Lerma Noval, MD  
Mary Ong Go, MD, FPSE  
Aristides Panlilio, MD, FASE, FPSE  
Kian-Keong Poh, MBBS, FASE  
Gregorio Rogelio, MD  
Thomas Ryan, MD, FASE  
Romeo Santos, MD  
Gregory Scalia, MBBS, FASE  
Amiliana Soesanto, MD  
Myla Gloria Supe, MD, FPSE  
Ru San Tan, MBBS  
Khim Leng Tong, MD, FASE  
Edwin Tucay, MD, FPSE  
Megan Yamat, RDCS, RCS, FASE

**The following faculty members do have financial relationships with industry/commercial supporters to disclose:**

Juliet Balderas, MD – Menarini-Bosentan (Speaker / Speaker's Bureau); Pfizer-Prevenar (Speaker / Speaker's Bureau)  
Roberto Lang, MD, FASE – Philips Imaging Systems (Consultant, Advisor)  
Jose Donato Magno, MD, FPSE – Astra Zeneca (Speaker / Speaker's Bureau); Bayer (Other (Educator or Honoraria)); GE Healthcare (Other (Educator or Honoraria)); Servier (Speaker / Speaker's Bureau)  
Lissa Sugeng, MD, MPH, FASE – Philips Health Care (Consultant, Advisor); Siemens Healthineers (Consultant, Advisor; Speaker / Speaker's Bureau); Toshiba (Research Grant Support, (Including PI))  
James Thomas, MD, FASE – Abbott (Consultant, Advisor; Speaker / Speaker's Bureau); Bay Labs (Spouse Employment Affiliation); Edwards

(Consultant, Advisor; Speaker / Speaker's Bureau); GE Medical (Research Grant Support, (Including PI); Speaker / Speaker's Bureau)

**The following members of the ASE CME Committee, Education Committee, and Board of Directors (Not serving as faculty) do not have any relationships with industry/commercial supporters to disclose:**

Karima Addetia, MD  
Carolyn Altman, MD, FAHA, FASE  
Bonita Anderson, MAPPLSC, DMU, AMS, FASE, ACS  
Federico Asch, MD, FASE  
Louis Bezold, MD, FASE  
Lori Blauwet, MD, FASE  
Merri Bremer, EdD, RN, RDCS, ACS, FASE  
Andra Duncan, MD, FASE  
Benjamin W. Eidem, MD, FASE  
Gregory Ensing, MD, FASE  
Alan Finley, MD, FASE  
John Gorcsan III, MD, FASE  
Tia Gordon, RDCS, FASE  
Edward Gill, MD, FASE  
Brian Holland, MD, FASE  
Judy Hung, MD, FASE  
Amer Johri, MD, FASE  
Eric Kallstrom, ACS, RDCS, FASE  
James Kirkpatrick, MD, FASE  
Allan L. Klein, MD, FASE  
Rebecca Klug, BA, RT(R), RDCSA, FASE  
Chris Kramer, ACS, RDCS, FASE  
Aparna Kulkarni, MD  
Stephen Little, MD, FASE  
Feroze Mahmood, MD, FASE  
Elizabeth McIlwain, MHS, RCS, FASE  
Praveen Mehrotra, MD, FASE  
Carol Mitchell, PhD, RDMS, RDCS, RVT, RT(R), ACS, FASE  
Monica Mukherjee, MD, FASE  
Raymond Musarra, RDCS, RCS, FASE  
Alina Nicoara, MD, FASE  
Maryellen H. Orsinelli, RN, RDCS, FASE  
Renee Palmer, MD, FASE  
Matthew Parker, MD  
Priscilla Peters, BA, RDCS, FASE  
Sue D. Phillip, RCS, FASE  
Juan Carlos Plana, MD, FASE  
Nishath Quader, MD, FASE  
Hedda Richards, RDCS, RCS, FASE  
Geoffrey Rose, MD, FASE  
Liza Sanchez, RCS, FASE

Elaine Shea, ACS, RCS, RCCS, FASE  
Maya Skoczylas, RDCS, RVT  
Timothy Slesnick, MD, FASE  
Gbemiga Sofowora, MD, FASE  
Shubhika Srivastava, MD, FASE  
Richard Stacey, MD, FASE  
Madhav Swaminathan, MD, FASE  
Carolyn Taylor, MD, FASE  
Richard Weiss, MD, FASE  
Bryan Wells, MD, FASE  
David Wiener, MD, FASE  
Danita Yoerger Sanborn, MD, FASE

**The following members of the current ASE Education Committee and Board of Directors (Not serving as faculty) have relationships with industry/commercial supporters to disclose:**

Keith Collins, MS, RDCS, FASE  
– IBM (Stock Ownership)  
Sabe De, MD, FASE – Astra Zeneca (Speakers Bureau); Bayer (Speakers Bureau)  
Jonathan Lindner, MD, FASE – GE Healthcare (Research Grant, (Including PI))  
Margaret Park, BS, ACS, RDCS, RVT, FASE  
– Davis Publishing Inc. (Royalty, Patents)  
William Perez, MD, MA, FASE – Alibaba Holdings (Stock Ownership); American Energy Industries (Stock Ownership); Myriad Genetics (Stock Ownership)  
Vera Rigolin, MD, FASE – Pfizer (Stock Ownership)  
Douglas Shook, MD, FASE – Edwards Life Sciences (Research Grant Support, (Including PI)); Liva-Nova (Education); Boston Scientific (Education); Edwards Lifesciences (Consultant/Advisor)  
Raymond Stainback, MD, FASE  
– GE (Stock Ownership)

**All members of the ASE staff who were involved in the planning and implementation of this activity do not have any relationships with industry/commercial supporters to disclose:**

Christina LaFuria, Director of Education  
Mary Lawson, CME Coordinator  
Jaclyn Levine, Meeting Planner  
Erin McClure, Director of Meetings  
Andie Piddington, Corporate Relations Manager  
Andrea Van Hoever, Deputy Director  
Robin Wiegerink, MNPL, Chief Executive Officer

**American Society of Echocardiography**

**29th Annual Scientific Sessions**

**SEE THE SOUND  
HEAR THE SCIENCE**

**ASE**

**2018**

**JUNE  
22-26**

**NASHVILLE★TN**

**Gaylord Opryland Resort  
& Convention Center**

**ASEScientificSessions.org**

# ECHO ASE ASEAN

# A N N U A L 3rd

ASE would like to thank our  
2018 Industry Roundtable Partners.



## Connect with ASE

Join the conversation by using #EchoASEAN

 [Facebook.com/asecho](https://www.facebook.com/asecho)

 [@ASE360](https://twitter.com/ASE360)

 [The American Society of Echocardiography](https://www.linkedin.com/company/the-american-society-of-echocardiography)

 [@ASE360](https://www.instagram.com/ASE360)

 [Connect.asecho.org](https://connect.asecho.org)

 [Pinterest.com/ASE360](https://www.pinterest.com/ASE360)

 [ASE360](https://www.youtube.com/ASE360)



American Society of Echocardiography

2530 Meridian Parkway, Suite 450

Durham, NC 27713, United States

Phone: 1-919-861-5574

Fax: 1-919-882-9900

[ASEcho.org](https://www.asecho.org)