

## Constrictive Pericarditis

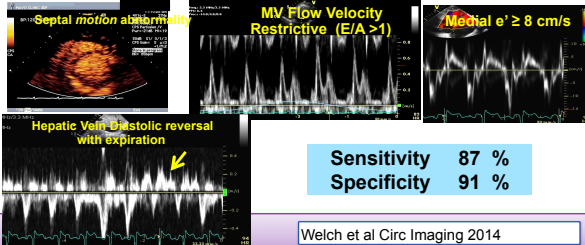


Bijoy K Khandheria, MD, FASE, FACC, FESC  
Director, Echocardiography Services, Aurora Health Care

No conflict, no off label use

Echocardiographic Diagnosis of Constrictive Pericarditis: Mayo Clinic Criteria  
Terrence D. Welch, Lieng H. Ling, Raul E. Espinosa, Nandan S. Anavekar, Heather J. Wiste, Brian D. Lahr, Hartzell V. Schaff and Jae K. Oh

### Echo Diagnostic Criteria



## Diagnosing Constrictive Pericarditis

- 4 parameters
  - Ventricular septal motion abnormality
  - Mitral inflow velocity E>A
  - Mitral annulus medial  $e' \geq 8$  cm/sec
  - Hepatic vein diastolic expiratory flow reversal
- Identify mimickers of constriction
  - Restrictive CM
  - Severe TR
  - Inter-ventricular dependence from other causes

*American Society of Echocardiography Clinical Recommendations for Multimodality  
Cardiovascular Imaging of Patients with Pericardial Disease*

Albin L. Klein, MD, FASE, Chair; Suhayr Abbana, MD, Deborah A. Agler, RCT, RDCS, FASE, Christopher P. Appleton, MD, FASE, Craig R. Alpert, MD, Brian Boffe, MD, FASE, Judy Chang, MD, FASE, Maria J. Garcia, MD, Izabela Kozmin, MD, FASE, Jie-A. Oo, MD, FASE, E. Rene Rodriguez, MD, Hartzell V. Schaff, MD, Paul Schoenhagen, MD, Carmela D. Tan, MD, Richard D. White, MD

Journal of the American Society of Echocardiography  
Volume 28, Issue 9, Pages 955-1012.e15 (September 2013)  
DOI: 10.1016/j.echo.2013.06.023

