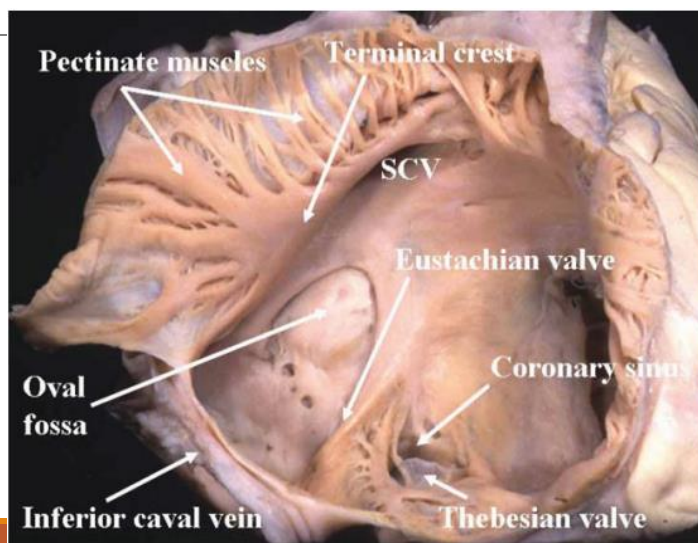


CARDIAC ANATOMY

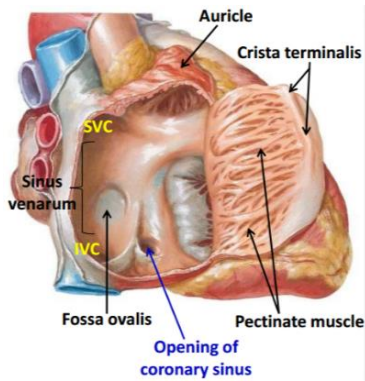
CARDIAC DISSECTION: TRICUSPID AND PULMONIC VALVES

MADALINA PETRESCU, MD
SWEDISH MEDICAL CENTER, SEATTLE, WA
JANUARY 2018

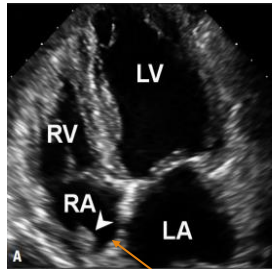
Structures in RA



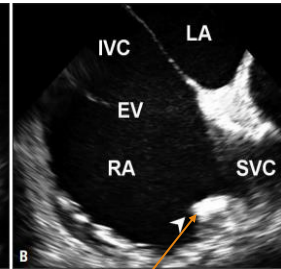
Crista Terminalis



TTE: 4ch view

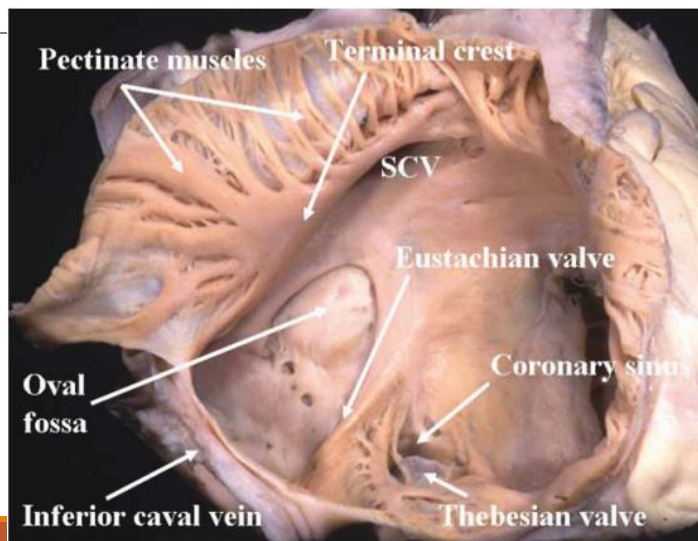


TEE: bicaval view

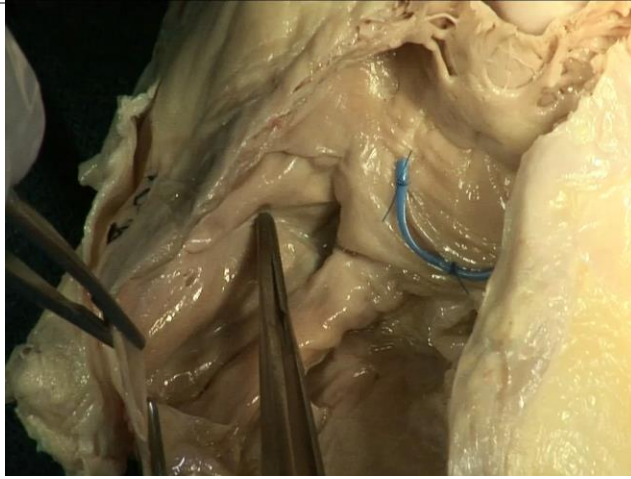


Crista Terminalis

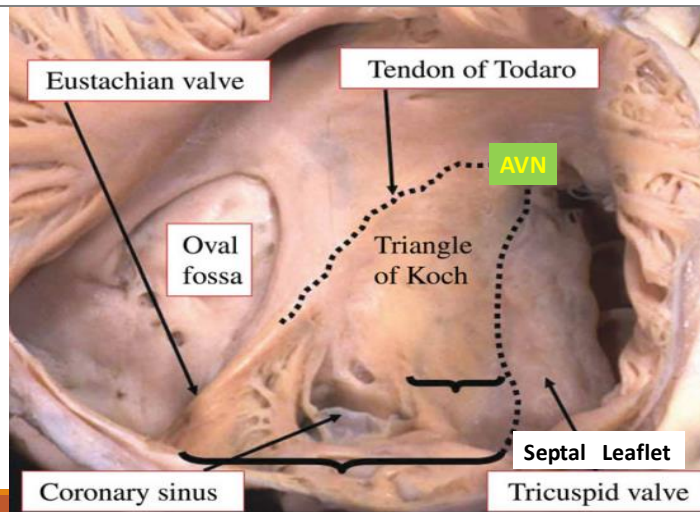
Structures in RA



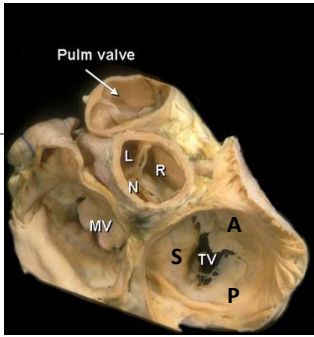
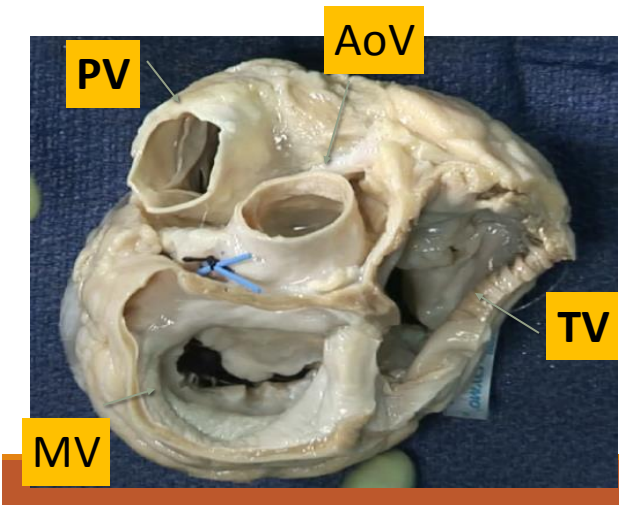
Inside RA: Fossa ovalis



Tricuspid Valve: Relationship to Conduction system

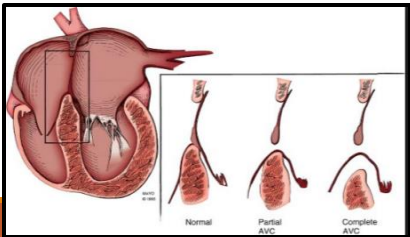
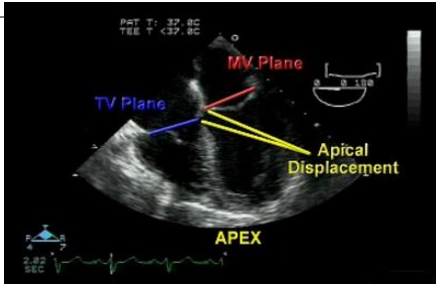
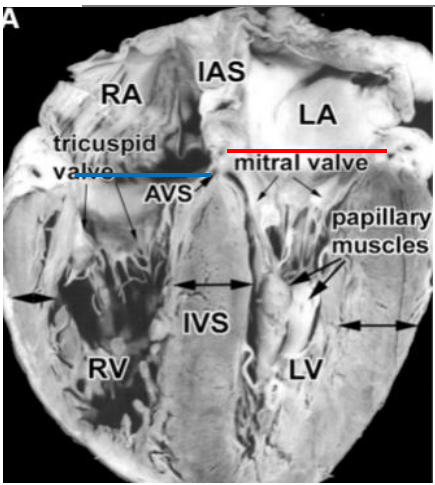


The 4 valves:
Above perspective



- Largest of all valves
- Most apically positioned

TV insertion:
More apical relative to MV



TRICUSPID VALVE COMPLEX

Leaflets

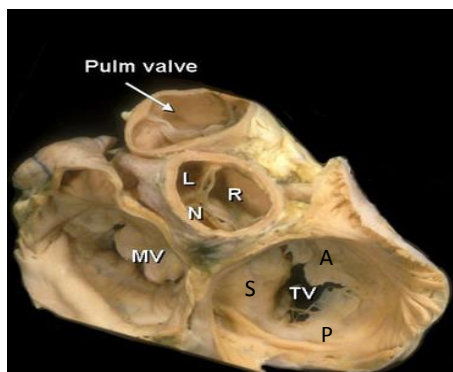
Annulus

Chordae

Papillary muscles

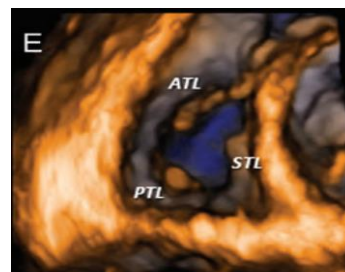
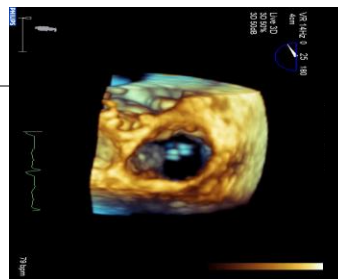
RV

TV: Identifying the leaflets



Above the valve perspective

3DE: RA view, top of valve



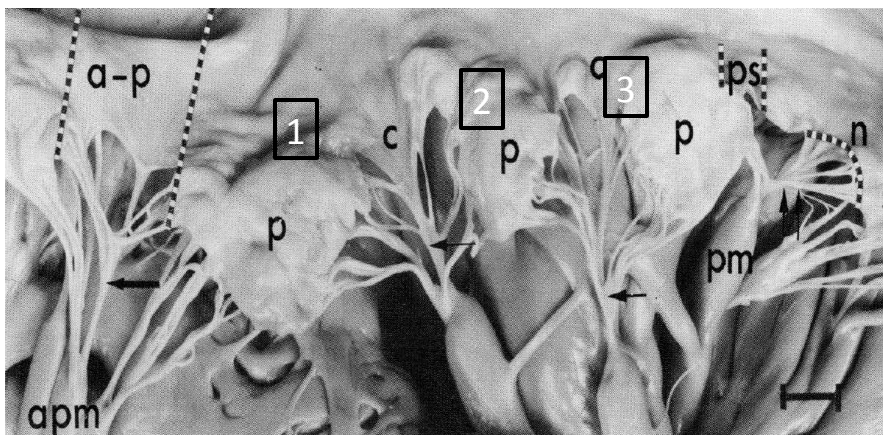
3DE: RV view, below the valve

Tricuspid valve leaflets



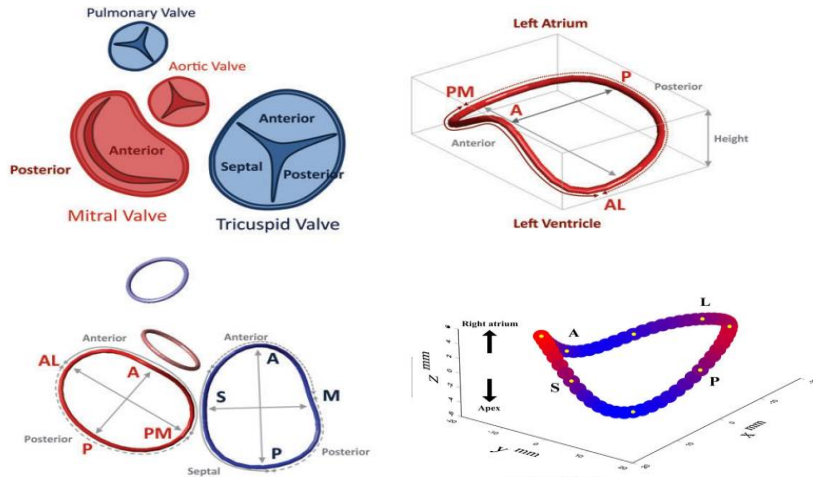
Posterior Leaflet: 3 Scallops

Complex chordal structure

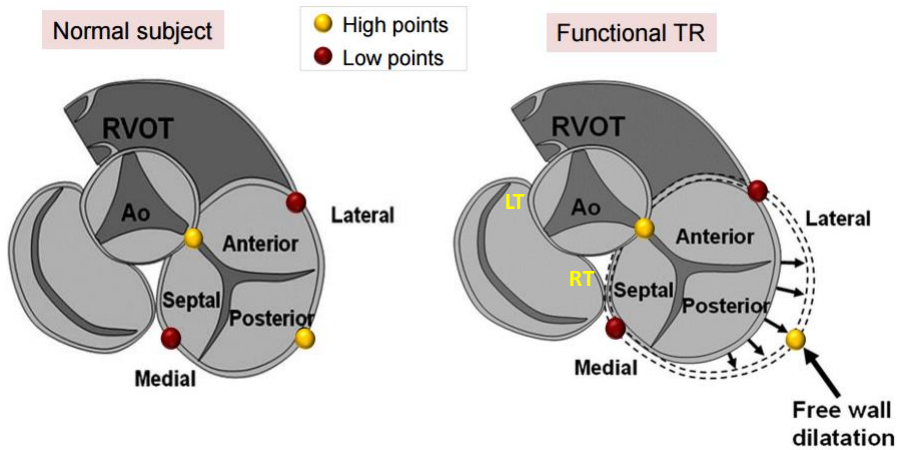


Silver. Circulation 1971: 333

Tricuspid annulus: Compared to MV

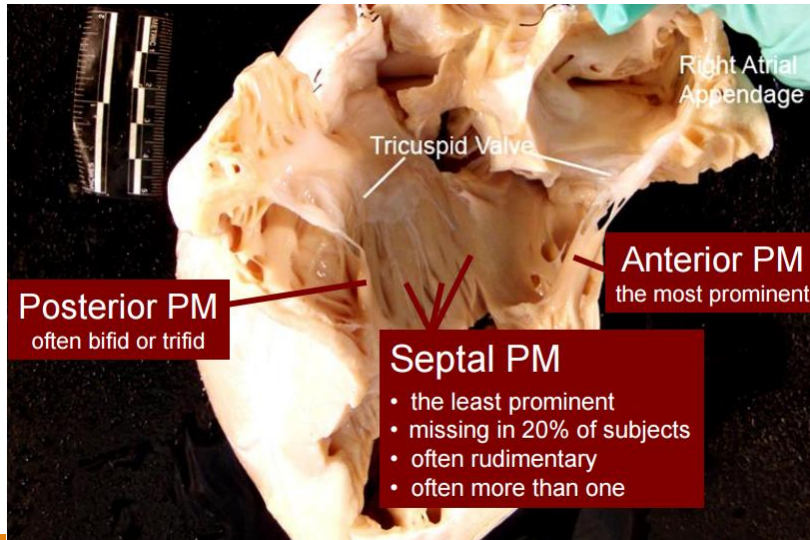


Tricuspid annular dilatation



TON-NU T ET AL. CIRCULATION2006; 114, 143-9

TV: Subvalvular Apparatus

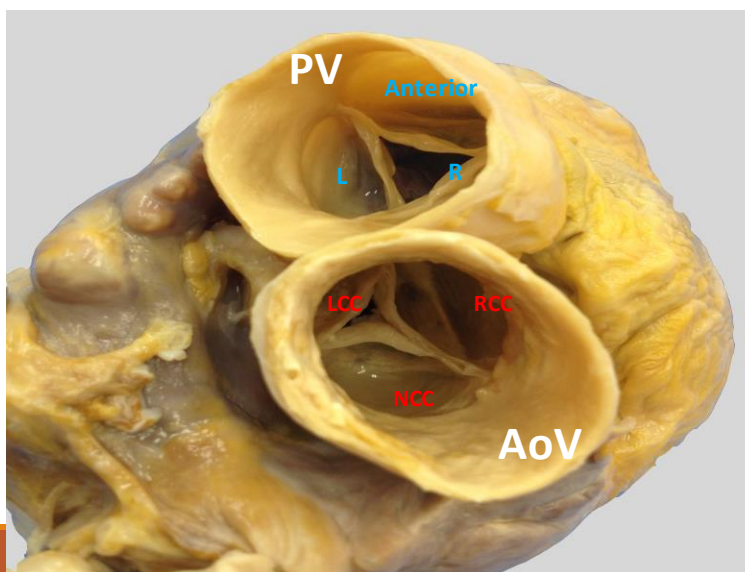


Tricuspid Valve Leaflets from below

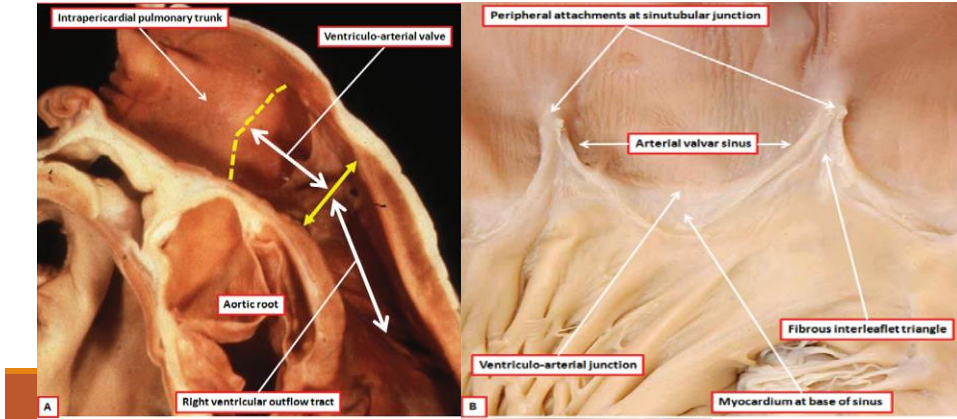
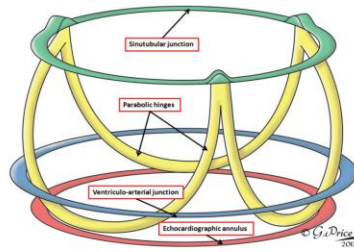


Pulmonic valve

Relationship of PV to AoV



PV anatomy:



THANK YOU!

