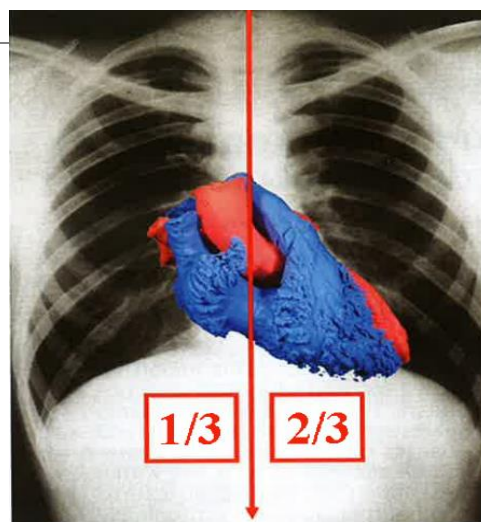


Cardiac Anatomy

Live Dissection: Aortic & Mitral Valves

MADALINA PETRESCU, MD
SWEDISH MEDICAL CENTER
JANUARY 2018

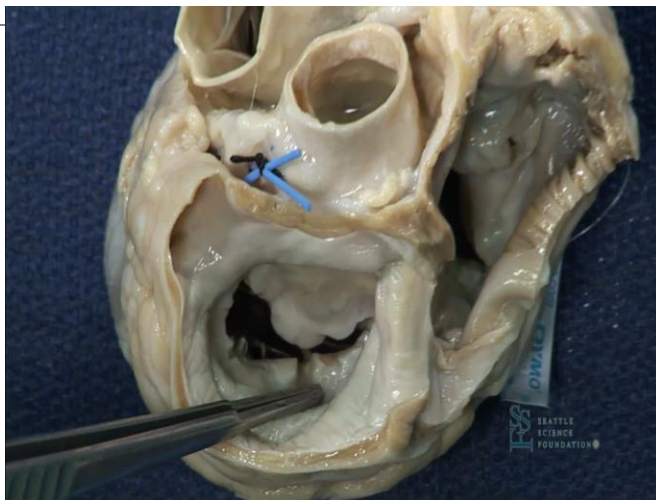
Cardiac anatomy: Orientation



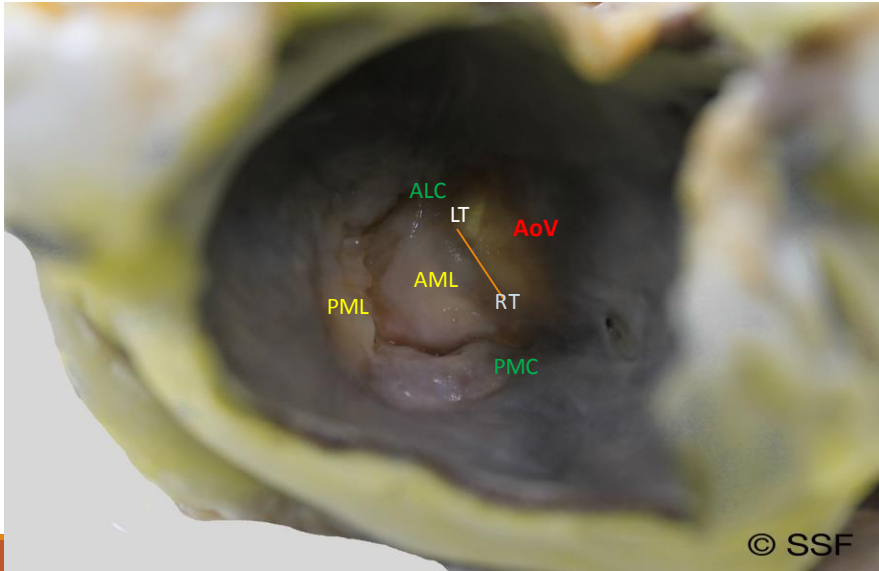
The 4 Valves: Relational Anatomy



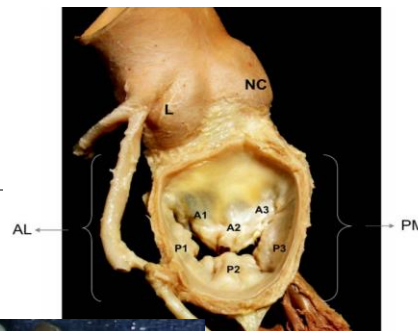
MV: Above the valve perspective
“en face view”



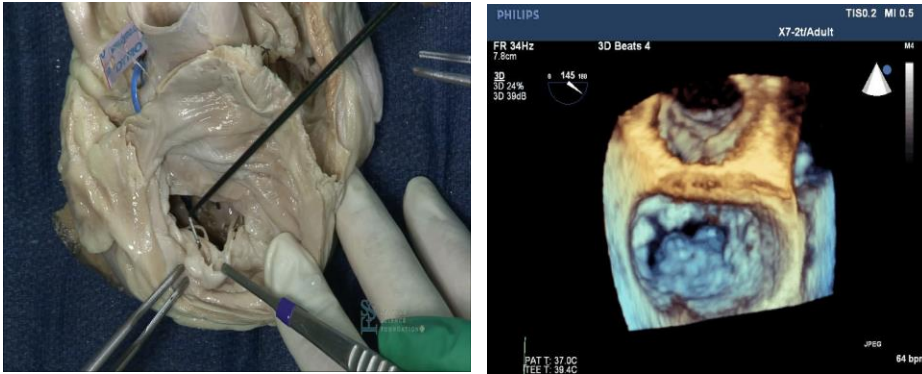
MV: leaflet shape



Leaflet Segmentation

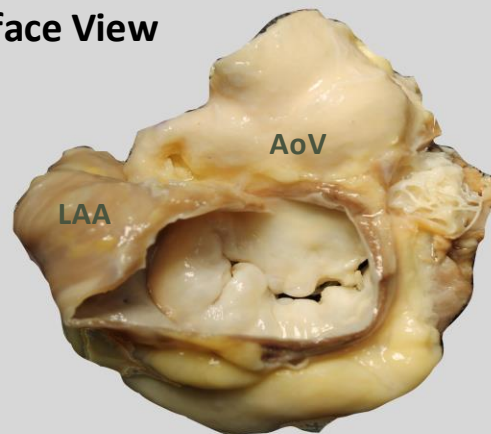


What's the pathology?



Posterior Leaflet: How many scallops?

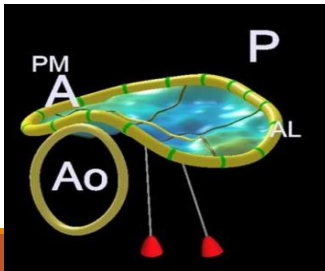
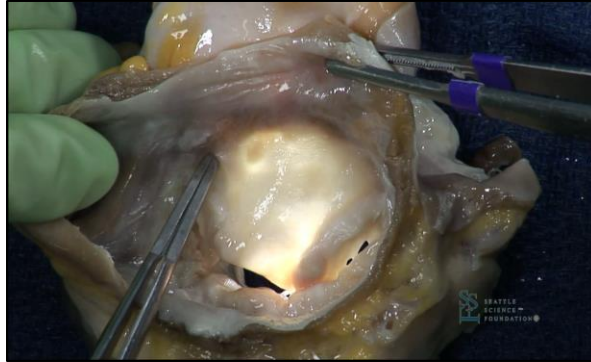
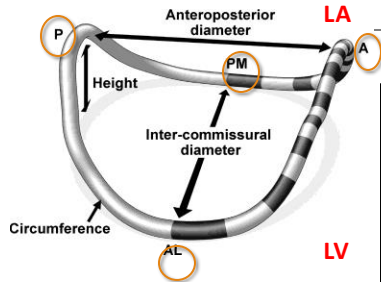
MV : En face View



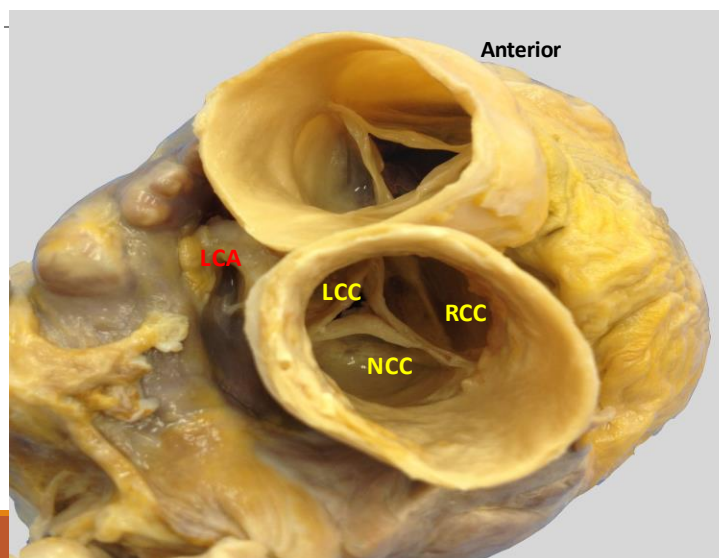
© SSF

Mitral Annulus: Saddle Shaped structure

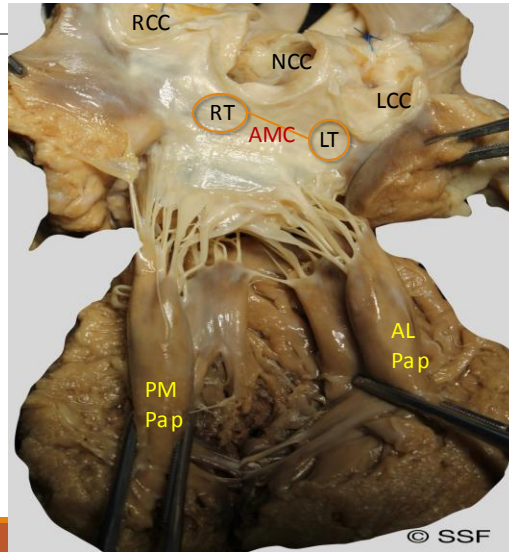
Anatomy of Annulus



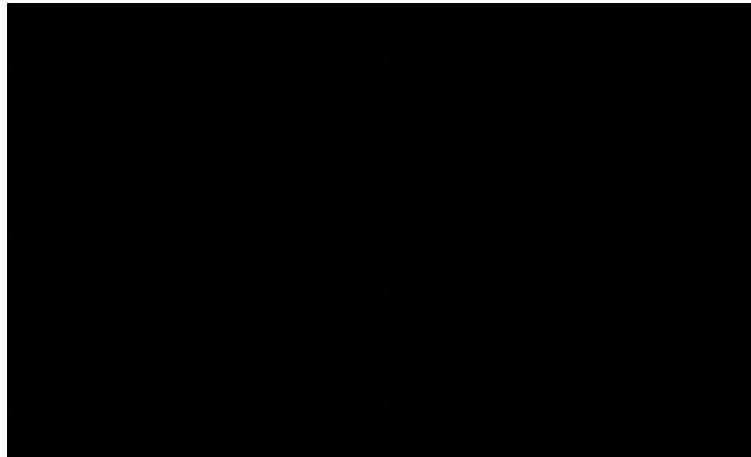
Aortic valve: Above perspective



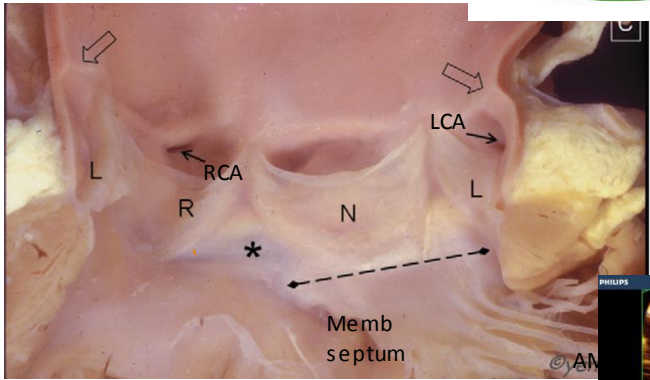
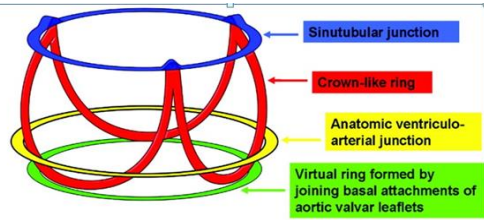
Mitral valve complex



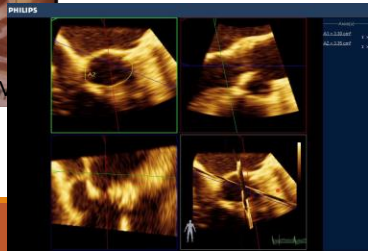
Anatomic Relationship of AoV and MV



AoV complex



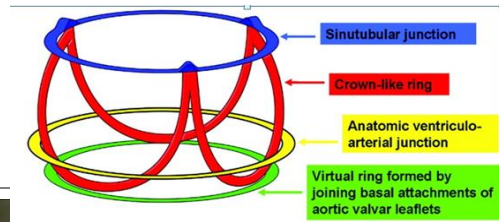
3DE: measuring the annulus



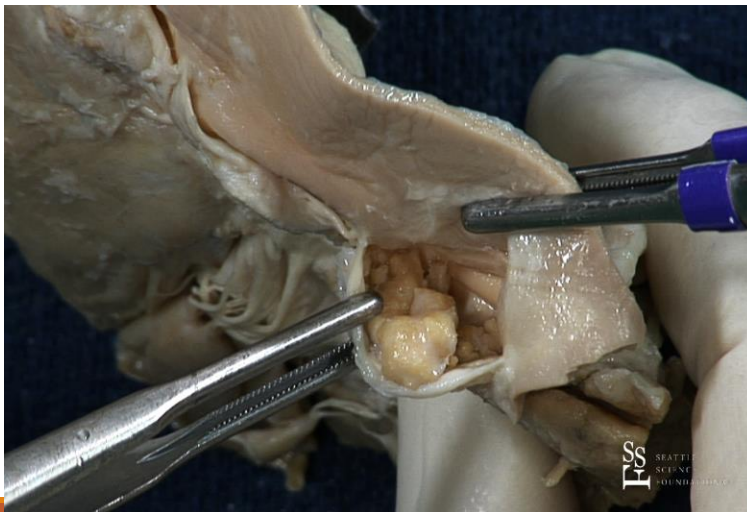
AoV: Fibrokeleton & Conduction system

Piazza N et al. Circ Cardiovasc Interv. 2008;1:74-81

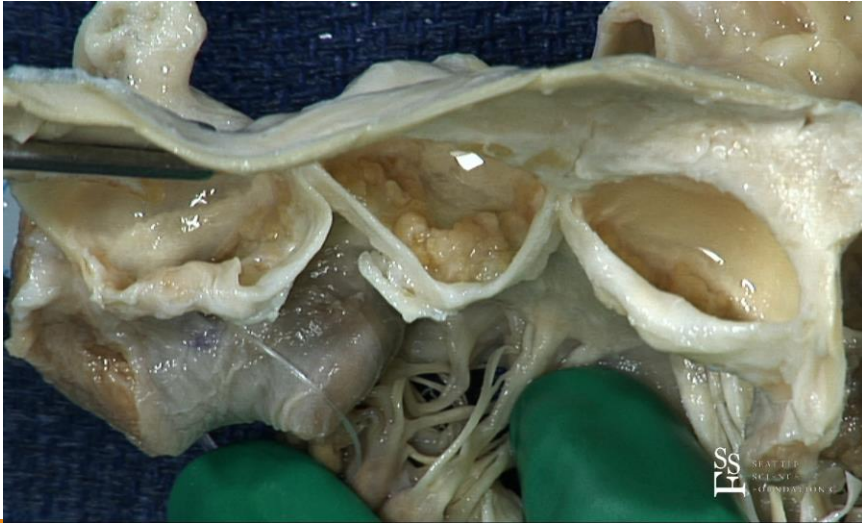
Aortic valve complex
Coronary distance &
heights



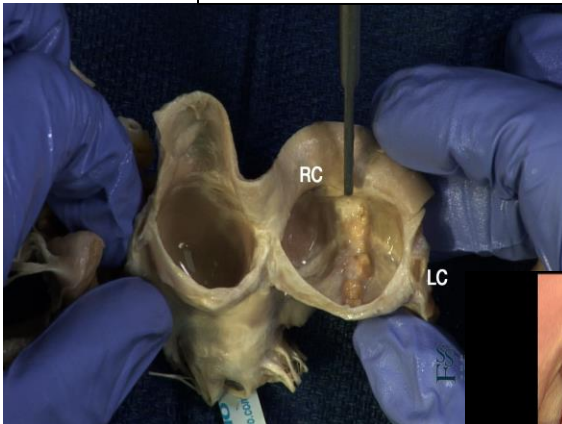
Case of bulky aortic calcification



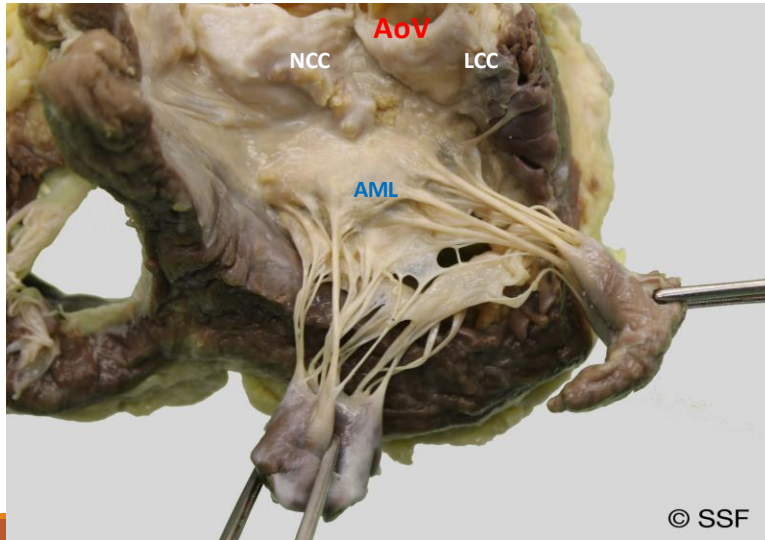
Aortic Calcification



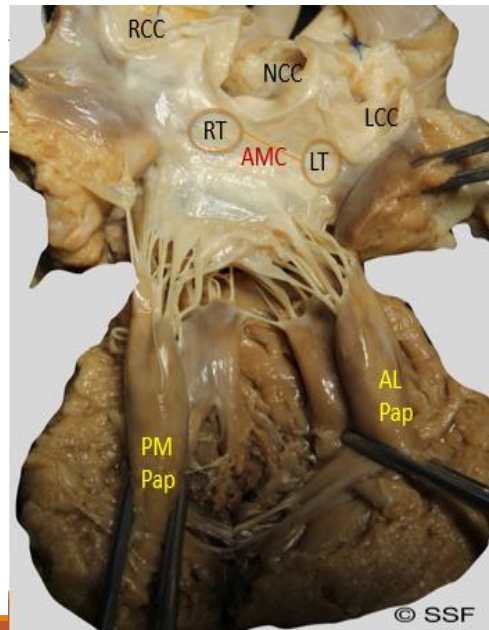
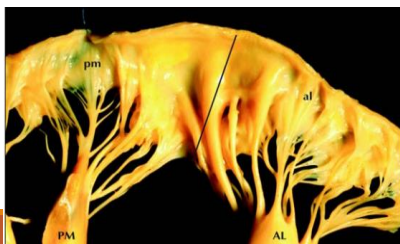
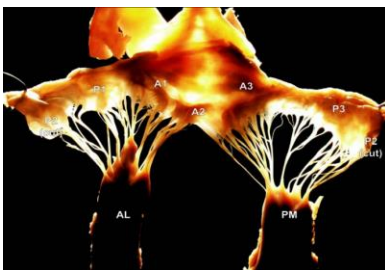
Bicuspid AoV



Beware of Anterior MAC



Subvalvular apparatus



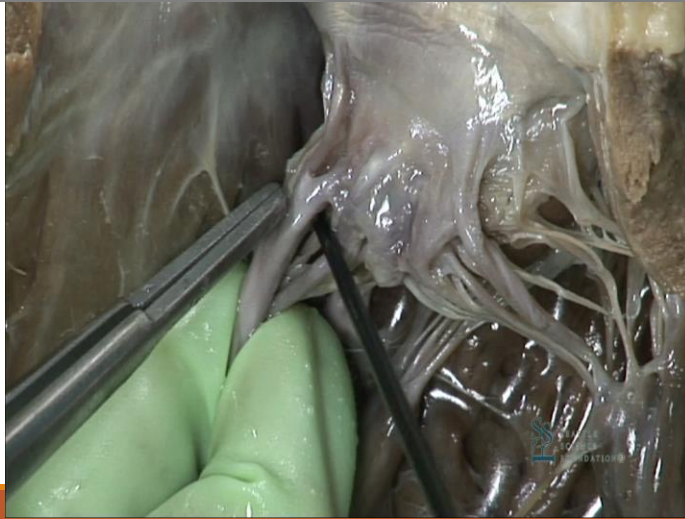
MV: Chordae types



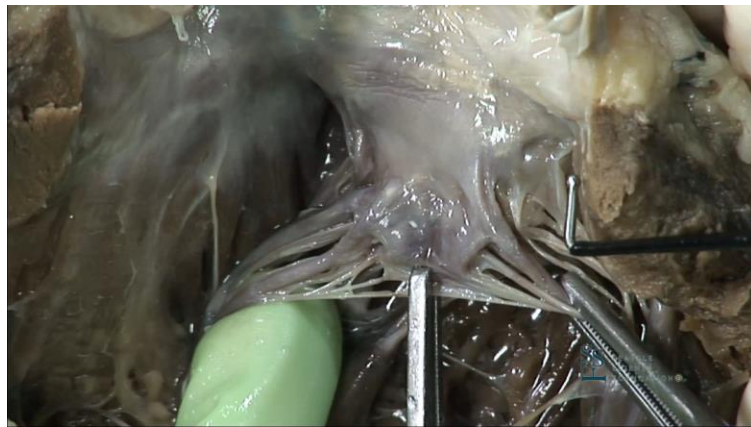
Flail P2



Strut Chorda



Coaptation Zone



Thank you for your attention

