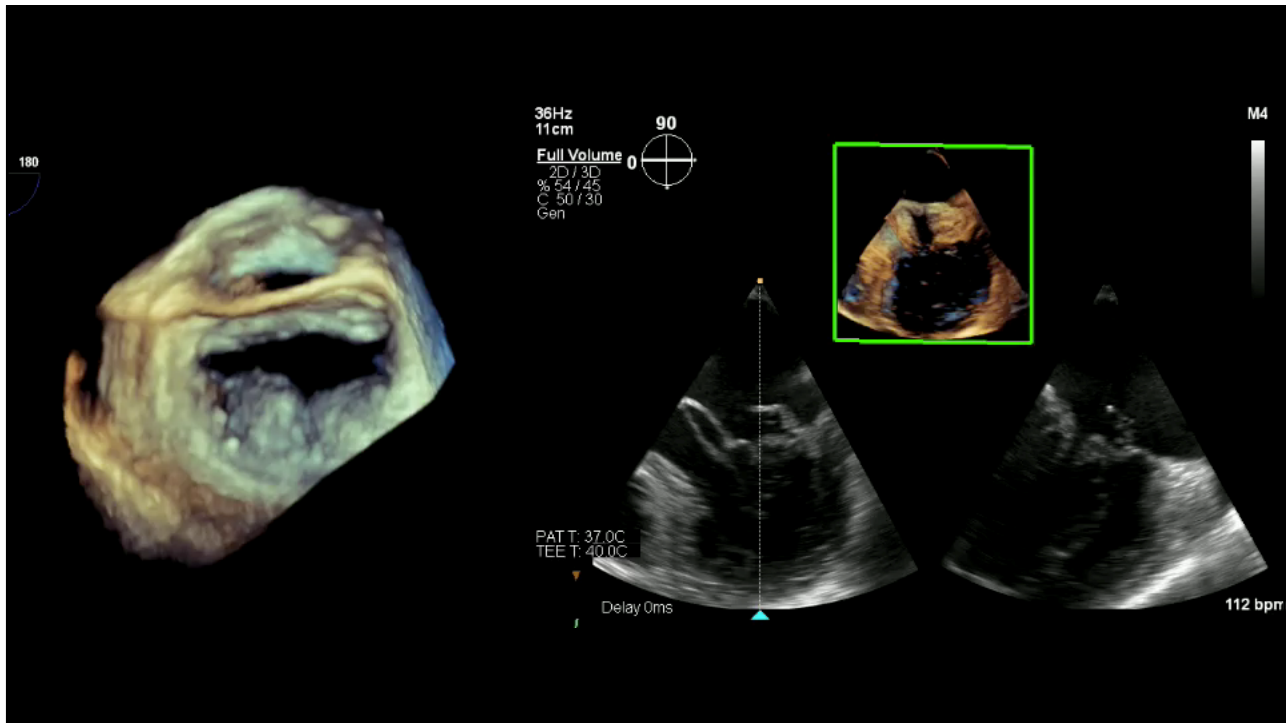
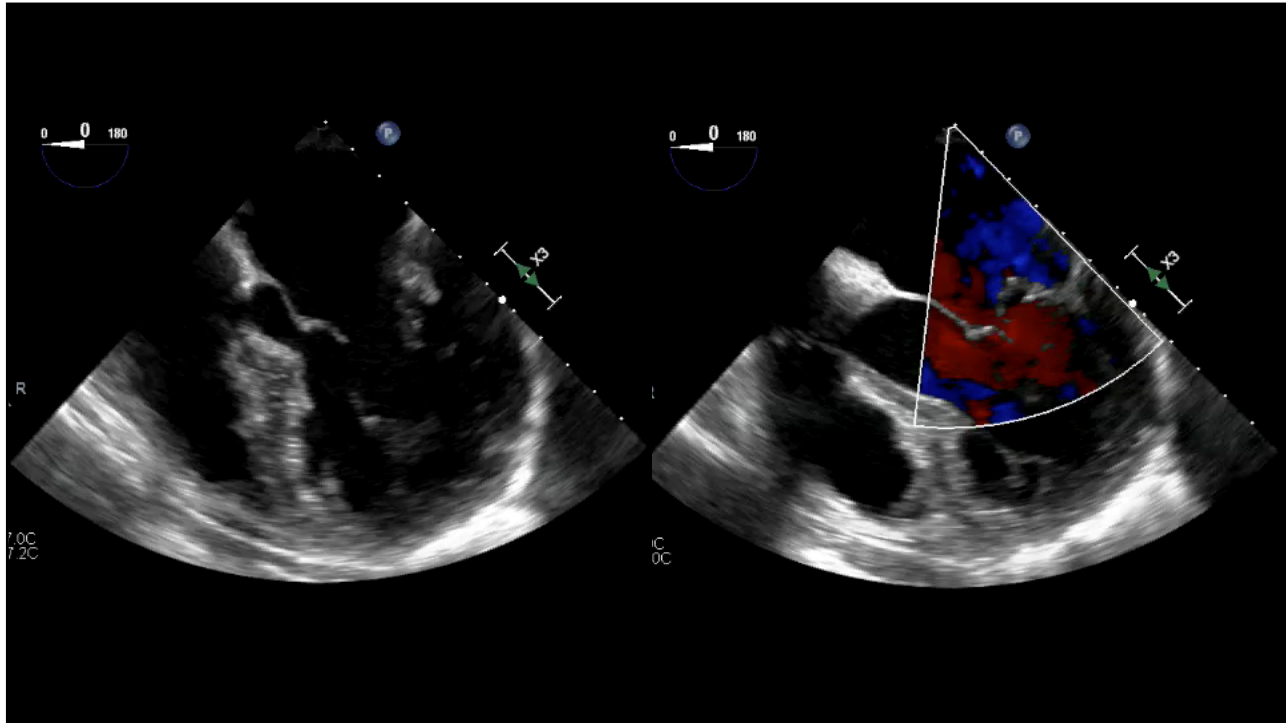


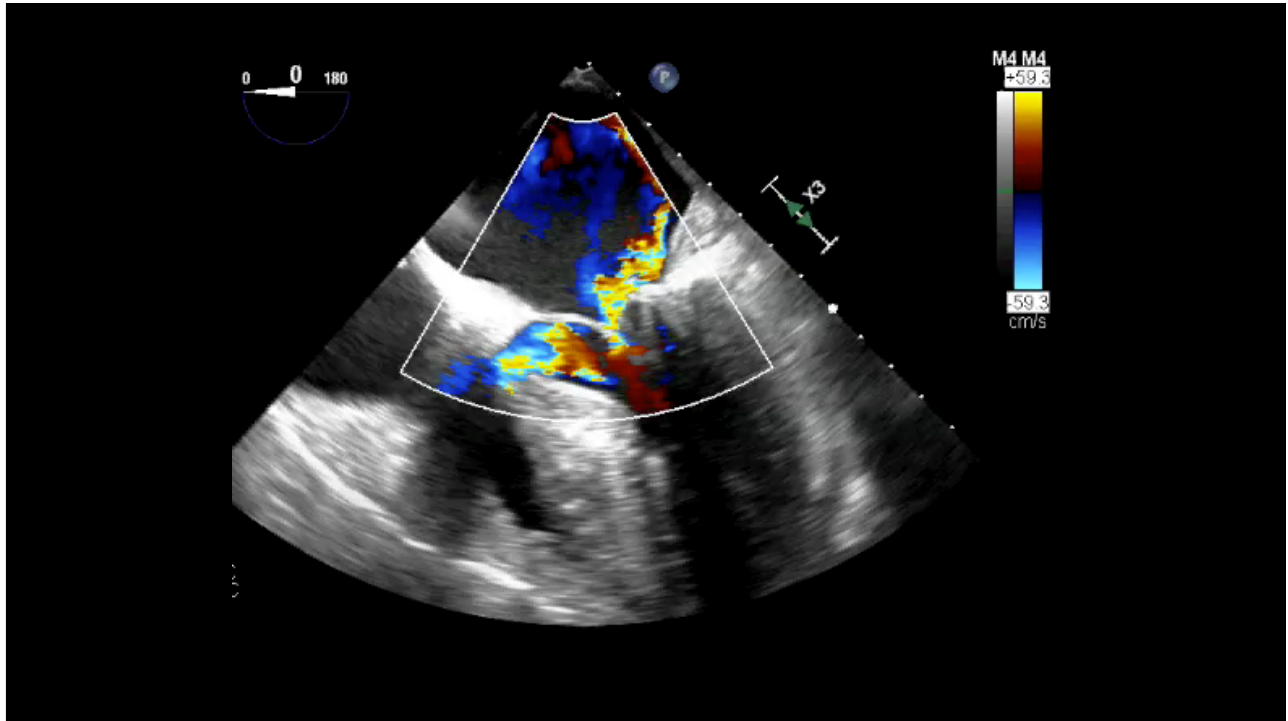
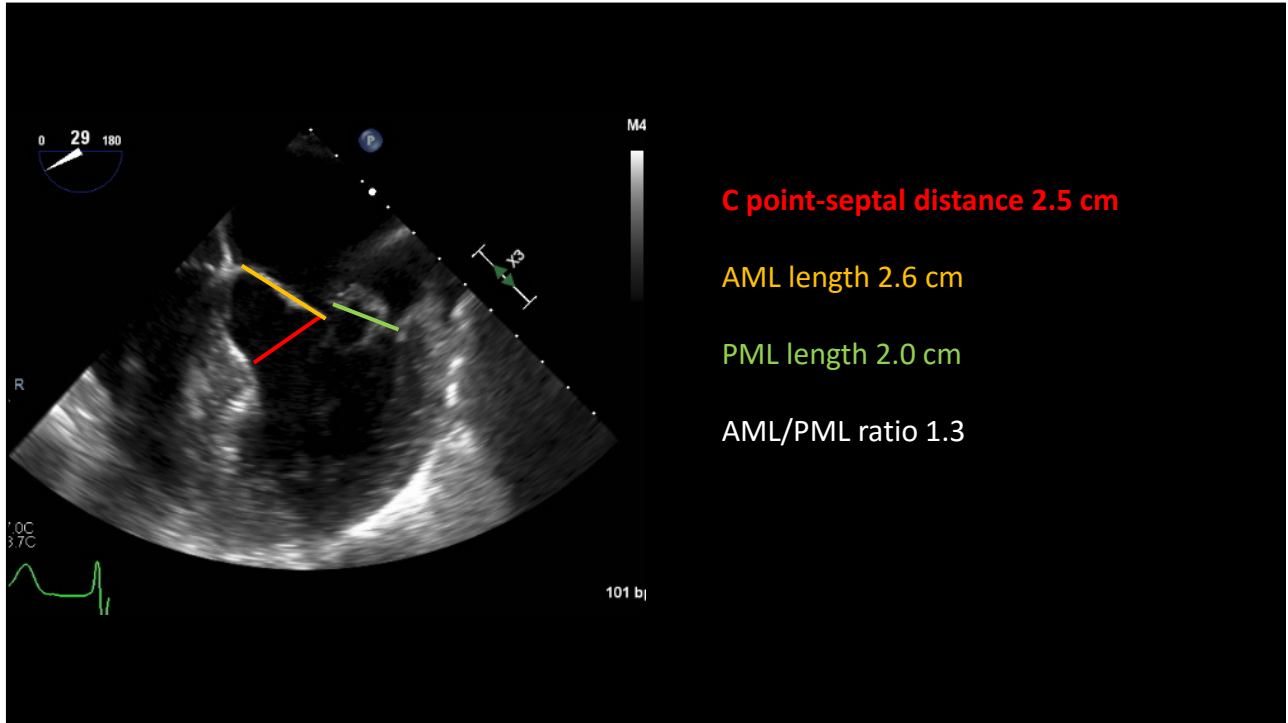
Play it again, SAM

Matthew W Parker, MD, FACC
University of Massachusetts Medical Center

71 year old man with palpitations and a murmur

- Posterior prolapse and MR for many years
- Recent onset of atrial fibrillation

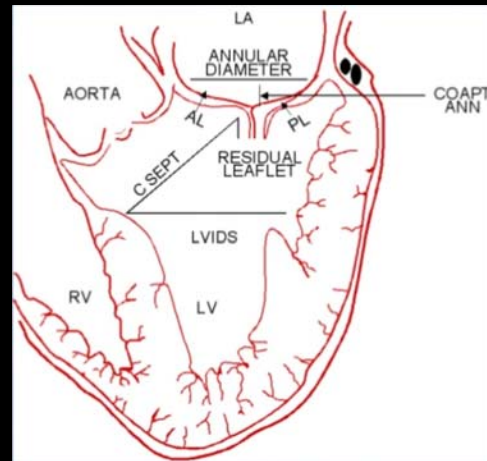




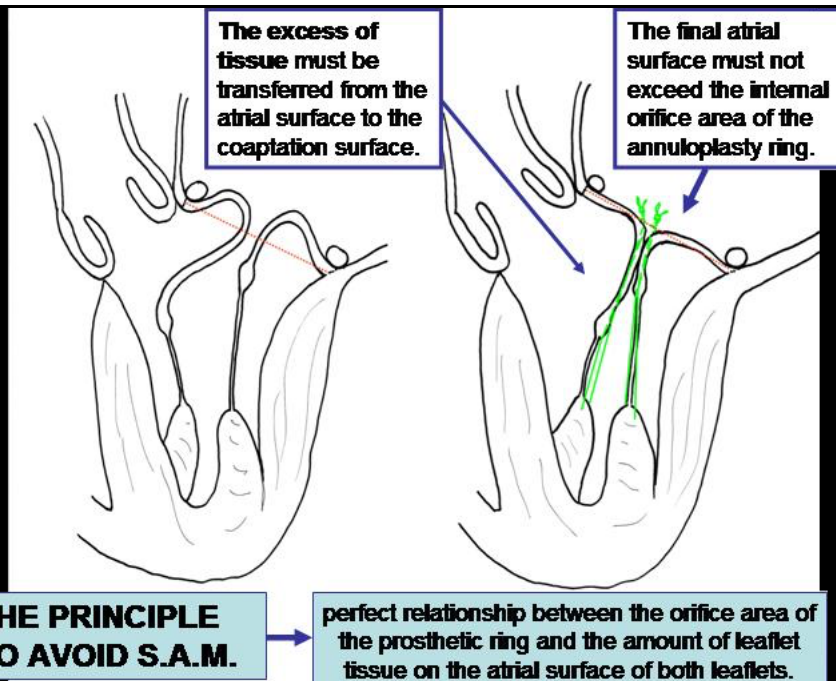
SAM Complicates ~5% of Mitral Repairs

Risk factors:

- C point-septal distance < 2.6 cm
- PML height > 1.5 cm
- AML/PML ratio < 1.1-1.4



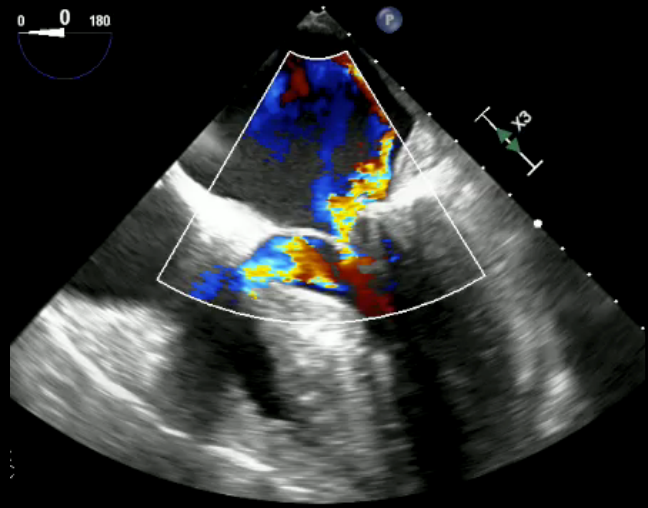
Varghese 2012; Maslow 1999; Gillinov 2001



Adapted from Garcia Fuster, CTSNet.org

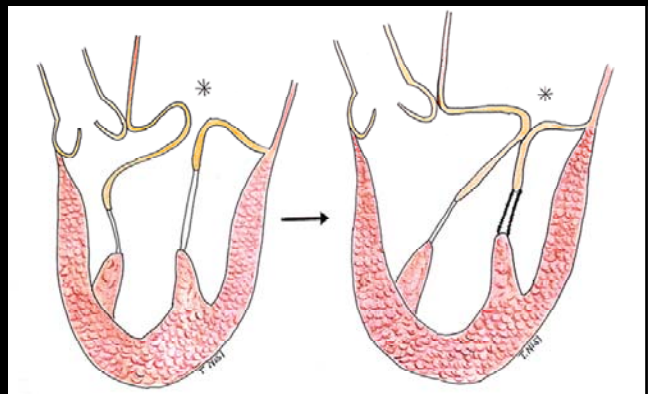
Initial strategies:

- Ensure adequate LV filling (preload)
- Consider beta blocker if tachycardia
- Make sure MAP >80 mm Hg



Surgical Strategies

- Reduce height of the posterior leaflet (goal <15 mm)
- Upsize annuloplasty ring
- Shortening neochord
- Septal myectomy in some cases
- Edge-to-edge suture



Alfieri & Lapenna 2015

