

Goofs, Coups, and Things I have learned in the past year

Vincent L. Sorrell, MD

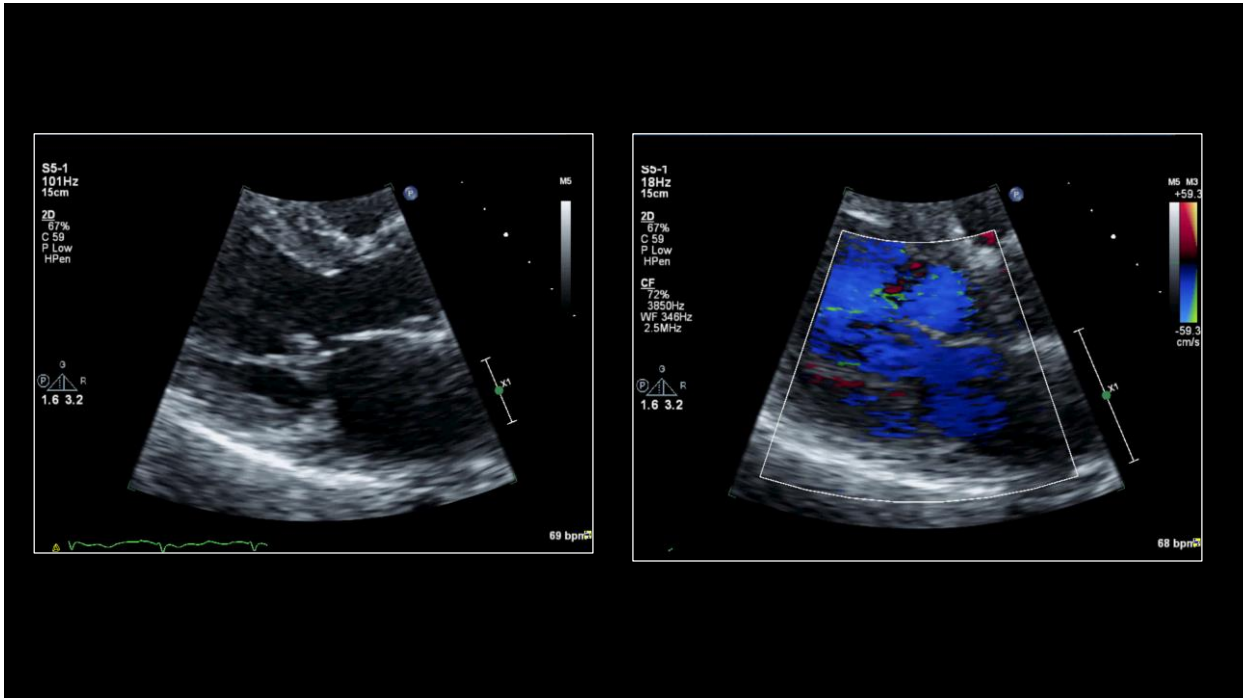
Anthony N. DeMaria Professor of Medicine
University of Kentucky / Gill Heart Institute
Assistant Chief, Division of Cardiovascular Medicine
Chair, Cardiac Imaging
Director, Adult Cardiology Fellowship Program



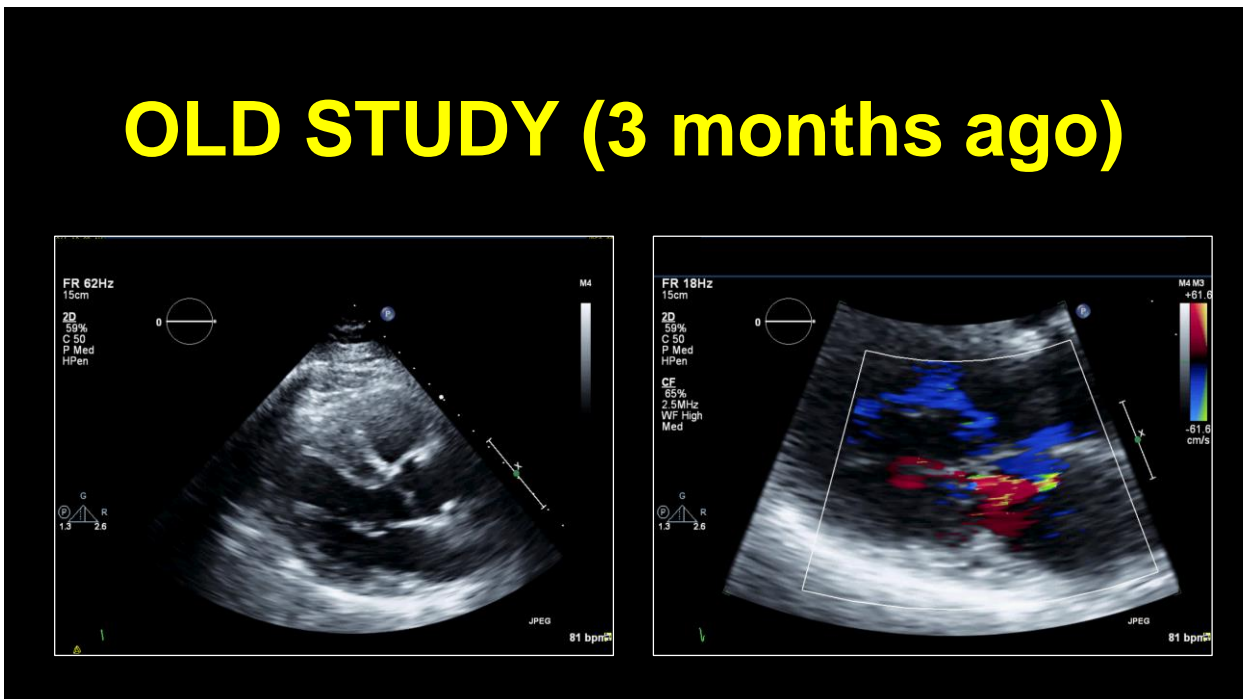
ASE Echo Florida, Oct 2017

50M with murmur
had echo / mild MR 3/12 ago

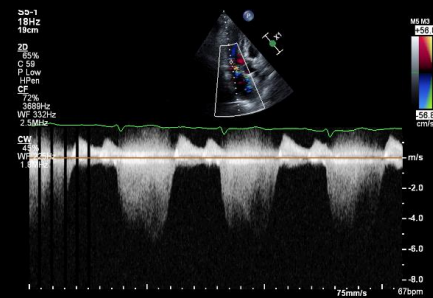
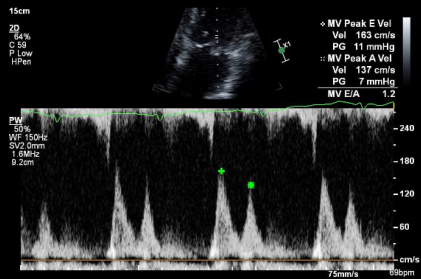
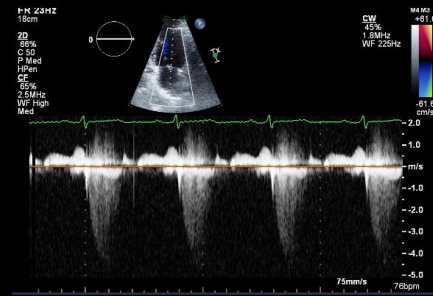
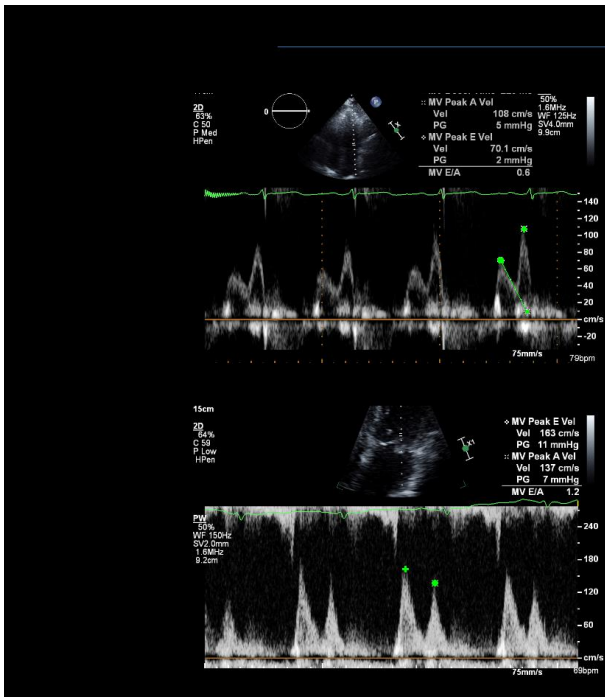
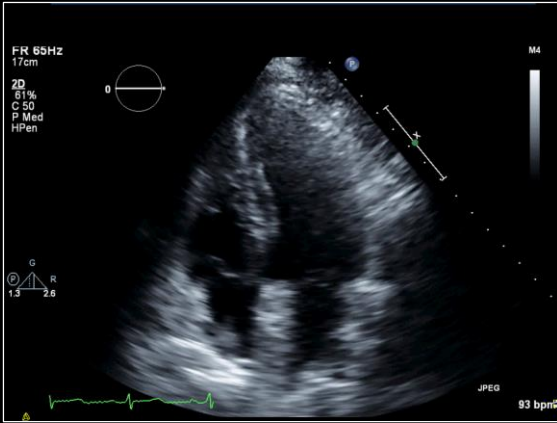
“no change from previous”

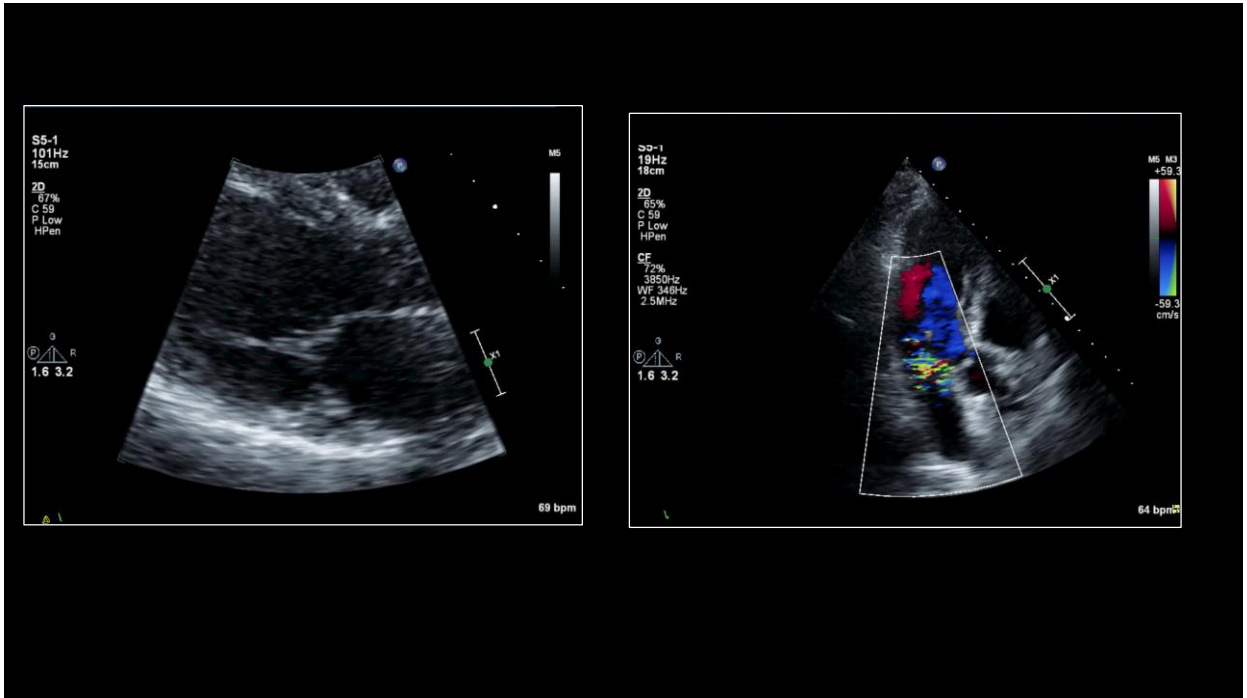


OLD STUDY (3 months ago)

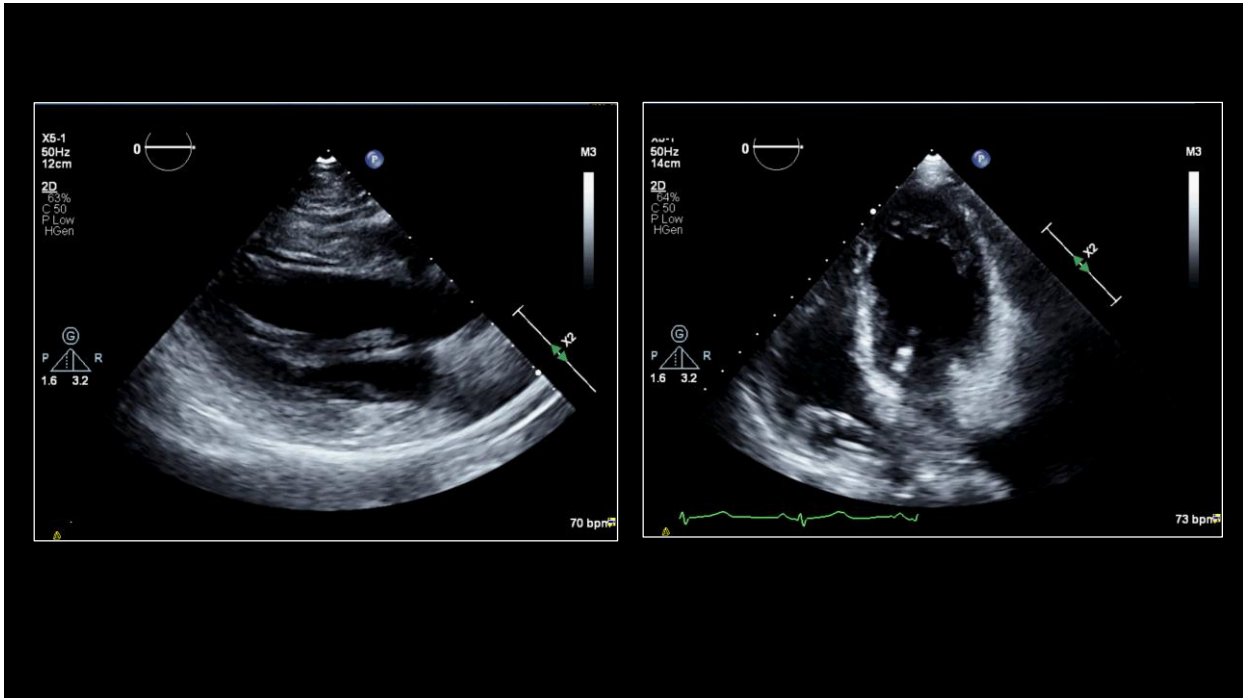


OLD STUDY (3 months ago)





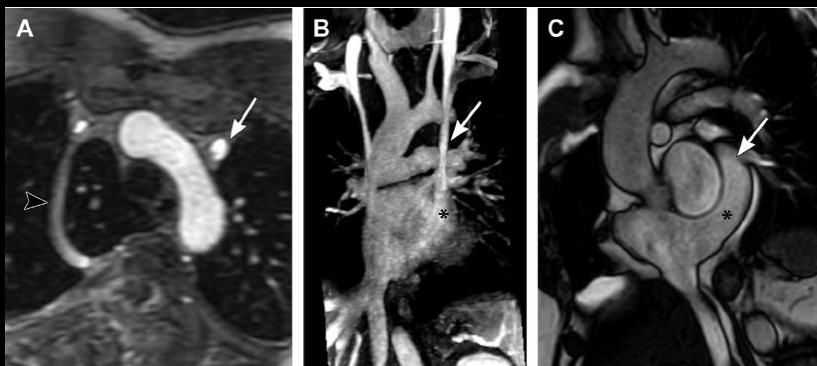
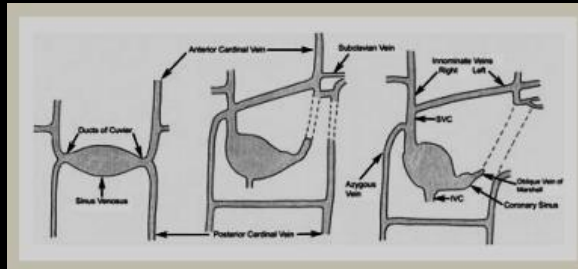
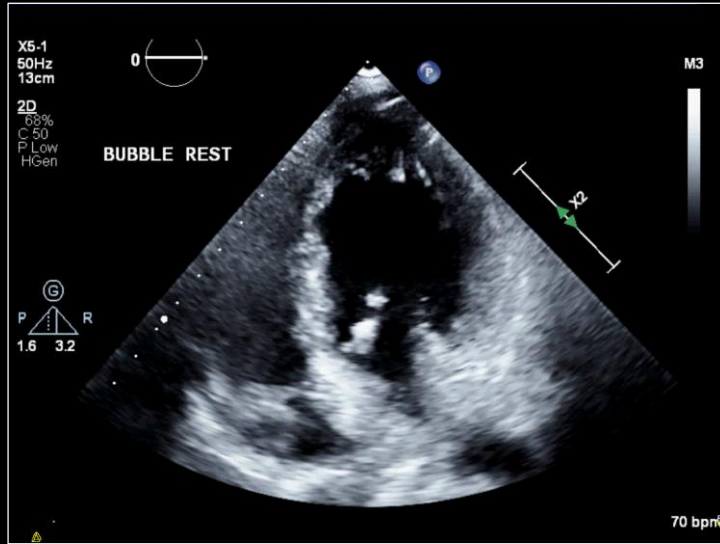
**45F with stroke-
To bubble or not?**



QUESTION

Should a bubble study be done?

- A. Yes - routine for all stroke patients*
- B. Yes - only 45 years old*
- C. Yes - abnormal 2D echo*
- D. No - I don't know what to do with + results*
- E. No – will wait to perform during my TEE*

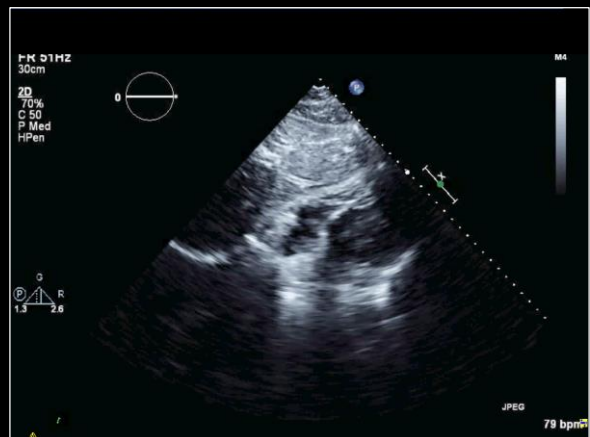
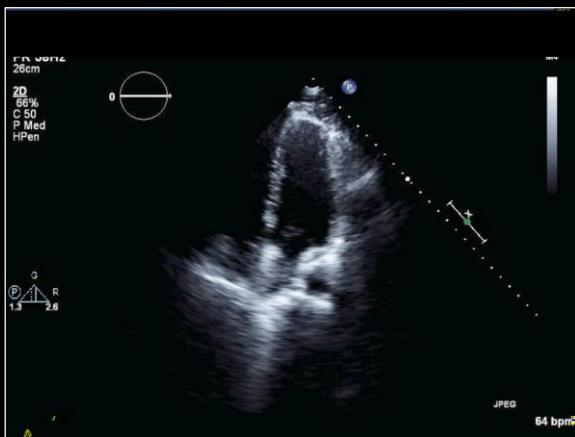


45M with STEMI

100% RCA at Cath

Echo: "bi-atrial myxoma vs thrombus-in-transit"

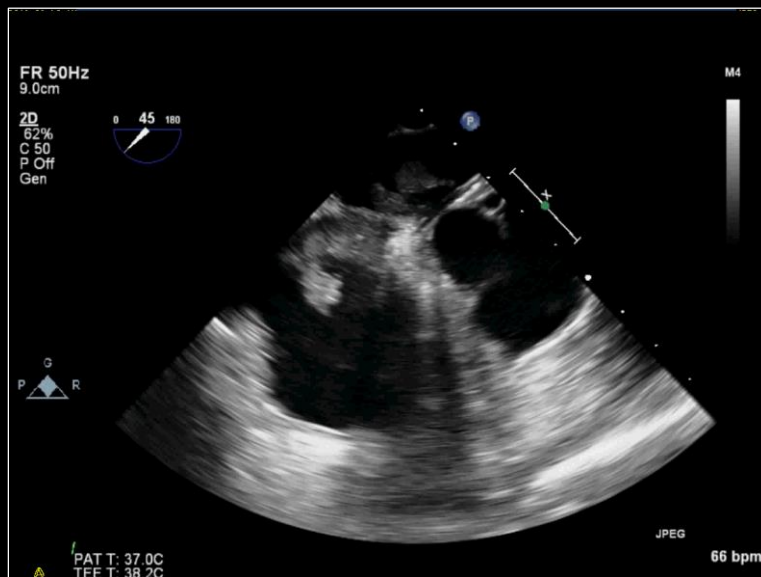
Started on anticoagulation and sent for urgent surgical evaluation



QUESTION

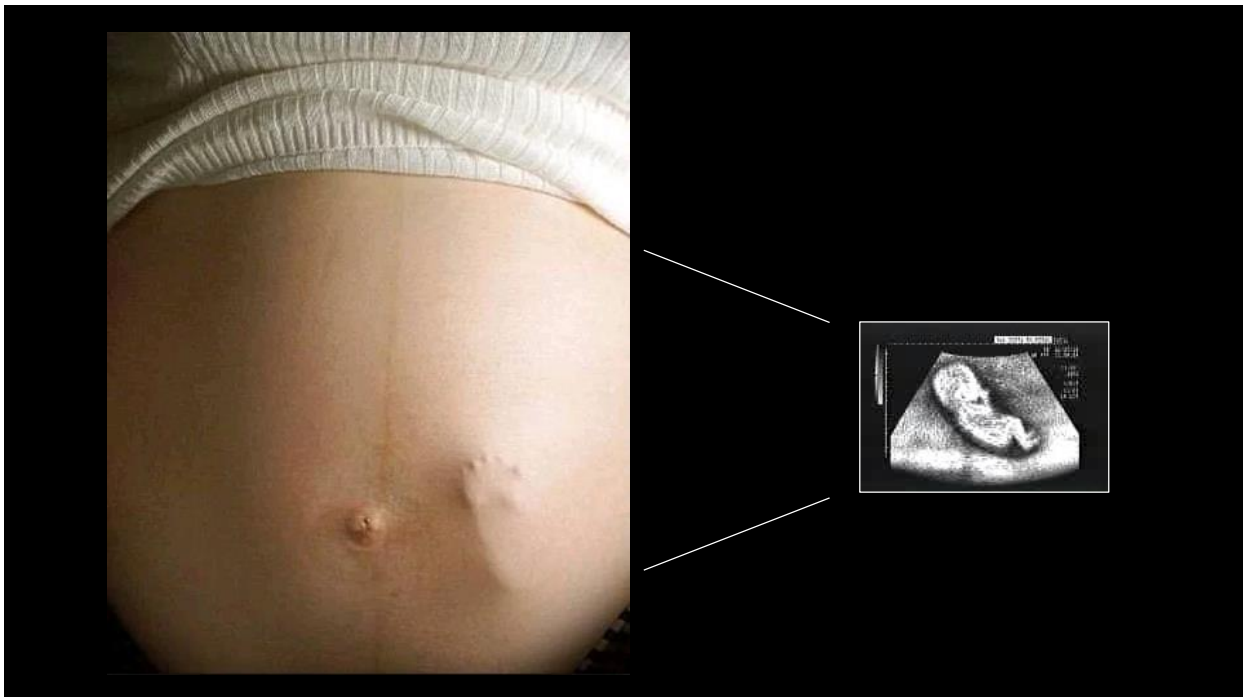
What would you do next?

- A. Send for urgent surgery
- B. Continue anticoagulation
- C. Perform TEE (duh... this is an echo conf)
- D. Perform CMR (BTW...are these portable now?)
- E. Perform Angio-Vac in Cath Lab



30 week old fetus –

Question:
**Would you ever let this
child drive?**



Basic Lab Imaging

Actual massive thrombus initially getting through and then getting lodged in the pulmonary artery...



