

# ECHO FLORIDA

# 6<sup>th</sup> ANNUAL



## ADVANCE PROGRAM

**October 8–10, 2017**

**Preconferences Available October 7  
Disney's Yacht & Beach Club Resorts  
Walt Disney World®, FL**

### Course Director

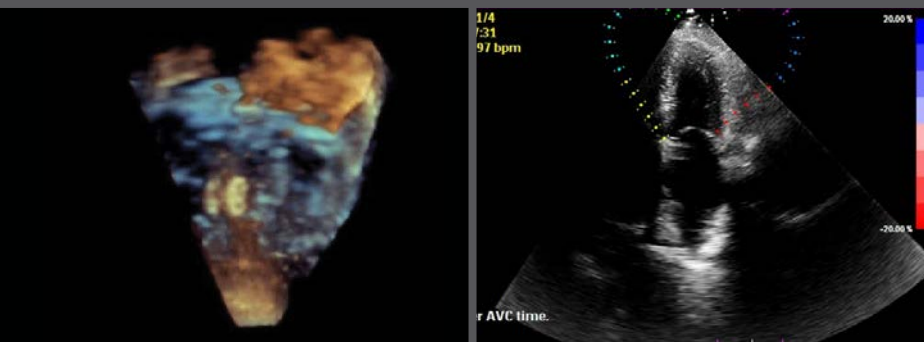
Gerard P. Aurigemma, MD, FASE  
UMass Memorial Medical Center  
Worcester, MA

### Course Co-Director

Linda D. Gillam, MD, FASE  
Morristown Medical Center  
Morristown, NJ

### Learning Lab Director

Deborah A. Agler, ACS, RDCS, FASE  
Cleveland Clinic  
Cleveland, OH



**Register now at [ASEcho.org/echoflorida](http://ASEcho.org/echoflorida)**



# Program Information

## Overview of Echo Florida

The Echo Florida course is a comprehensive review of cardiovascular ultrasound in clinical practice. The faculty is composed of experts who will discuss the strengths and limitations of established and emerging technologies and illustrate how these technologies can be used to improve and streamline patient care in a cost-conscious manner.

## Course Highlights

There is heavy emphasis on case-based learning.

Topics include:

- Coronary artery disease including stress testing
- Valvular heart disease
- Heart failure (systolic and diastolic) and cardiomyopathy
- Emerging technologies including contrast, 3D/4D echocardiography and strain imaging
- Complex congenital heart disease
- Case-based demonstrations on role of 2D and real time 3D/4D echocardiography to select, guide, and follow percutaneous structural heart disease interventions such as transcatheter aortic valve replacement and percutaneous mitral valve repair

## Preconference Learning Lab *(Additional fee required.)*

A learning lab will be offered on Saturday, October 7. This workshop requires a separate registration and is included in the total hours of educational content offered at the course.

### Learning Lab: LV Function and Strain

This Learning Lab will be interactive with a combination of live scanning, computer based sessions, and case examples. Sessions will show attendees exactly how to make measurements to assess chamber quantification, systolic and diastolic function, and valvular function.

### 3D Workshop

The 3D Workshop will be a combination of live scanning and computer based sessions focusing on 3D acquisition techniques as well cropping and image display. After introductory lectures and live scanning, there will be two separate workshops with different 3D vendors. One workshop will offer a temporary download of a fully functional 3D cropping program. Both vendors will be supplying limited numbers of laptops pre-loaded with 3D examples for hands-on learning. These workshops will cover 3D quantification of ventricular size and function, as well as valvular morphology and function.

## Who Should Attend

This course is designed for adult and pediatric cardiologists, cardiovascular surgeons, cardiovascular anesthesiologists, cardiac radiologists, fellows in training, cardiovascular sonographers, cardiovascular nurse specialists, internists, intensivists, and emergency physicians with special interest in clinical cardiology and echocardiography.

## Course Registration

Registration fees include breakfasts, lunches, refreshment breaks, the networking reception, access to course materials, and CME credit. ASE members take advantage of reduced registration fees as a benefit of membership. Register online at [ASEcho.org/echoflorida](http://ASEcho.org/echoflorida).

### ASE Membership

Nonmember registrants for the 6th Annual Echo Florida course will receive a complimentary American Society of Echocardiography (ASE) membership through December 31, 2018, with their registration. Membership is only available to those who have never been a member of ASE. ASE serves its members in numerous ways by providing education, advocacy, research, practice guidelines, and a community for their profession. ASE membership includes over \$750 of FREE CME credits a year, in addition to discounts on all ASE educational courses and products. Also included is a monthly subscription to the *Journal of the American Society of Echocardiography* (JASE), help with legislative coding and reimbursement issues, and other career resources. A plethora of online tutorials, webinars, and other educational activities make membership beneficial to echocardiographers located around the world. View the extensive list of member benefits at [ASEcho.org](http://ASEcho.org).

## Accreditation and Designation

The American Society of Echocardiography is accredited by the Accreditation Council for Continuing Medical Education to provide continuing medical education for physicians.

The American Society of Echocardiography designates this live activity for a maximum of 29.25 *AMA PRA Category 1 Credits*<sup>™</sup>. Physicians should claim only the credit commensurate with the extent of their participation in the activity. Successful completion of this CME activity enables the participant to earn up to 29.25 MOC points in the American Board of Internal Medicine's (ABIM) Maintenance of Certification (MOC) program. Participants will earn MOC points equivalent to the amount of CME credits claimed for the activity.



# Location Information

## Disney's Yacht & Beach Club Resort

Delight in the formal grace of a grand New England-style yacht club at this lakeside hotel. Relax in the inviting elegance of a plush lobby replete with nautical touches, explore the whimsical Stormalong Bay and rent a variety of watercraft from Bayside Marina. Sharing many amenities with its pastel-toned sister, Disney's Beach Club Resort, Disney's Yacht Club Resort is walking distance to *Epcot*<sup>®</sup> and a convenient boat ride to *Disney's Hollywood Studios*<sup>®</sup>.

**Special Features:** Beachside Water Recreation Area: Make a splash at Stormalong Bay, a three-acre water wonderland! Climb the mast of a life-size shipwreck to breeze down one of the highest hotel waterslides at Walt Disney World Resort. Catch currents in the lazy circular river, relax in one of three whirlpool spas and soak up the sun on the elevated tanning deck. Children can enjoy the gently sloping, beach entry and have a blast in the kiddie pool—complete with a miniature waterslide.

ASE has secured a block of rooms at a discounted rate for attendees at Disney's Yacht & Beach Club Resort. To make your reservations, please contact the hotel directly at 407-939-4686. Please specify that you are with ASE to secure the group room rate of \$239 per night (tax and other fees not included). You can also visit [ASEcho.org/accommodationsef/](http://ASEcho.org/accommodationsef/) to book your room online.

The room block will be held until Tuesday, August 29, 2017, or until the block is sold out. After this date, reservations will be accepted on a space-available basis. A deposit of one night room and tax will be held at the time of the reservation. Deposits will be forfeited for any cancellations occurring five days or less prior to arrival.

**Extend Your Stay:** Once you arrive, you will discover the Walt Disney World<sup>®</sup> Resort offers more magical experiences than you ever dreamed possible. Don't pass up the chance to add an extra few days before or after your meetings for a spectacular golf or spa getaway or the perfect vacation with family and friends. Disney's Yacht & Beach Club Resort will extend the same room rates\* to any nights you add to your visit.

*\*Room Rates are subject to change without notice and are based on availability. Group rates may not be combined with any other discounts or offers.*

## Make Time for the Magic!

As a Disney Resort Guest, you will enjoy special benefits that make your Walt Disney World<sup>®</sup> stay easier and more relaxing than ever. These benefits provide everything from extra time in the Theme Parks and convenient transportation to more magic all around.

### Purchase Theme Park Tickets in Advance

Available only to meeting attendees, their guests, and family members, Disney's multi-day and half-day Meeting/Convention tickets are designed to fit any agenda and can't be purchased at the Theme Park gates. To receive these special Theme Park tickets, you must purchase online at [MyDisneyGroup.com/Echo17](http://MyDisneyGroup.com/Echo17) or call 407-939-4686.

### Enhanced! *Extra Magic Hour* Benefit

Each day one of the Theme Parks opens an hour early or stays open up to three hours after regular Park hours for guests staying at select Disney Resorts, giving you even more time to enjoy select attractions before and after your meetings. This is a great way for you to maximize the value of your Disney Theme Park Tickets based around your schedule! *Valid Theme Park admission and Walt Disney World<sup>®</sup> Resort ID are required.*

### Convenient *Walt Disney World<sup>®</sup>* Transportation

If you are arriving by air at Orlando International Airport, Disney's legendary service starts the moment you touch down and continues throughout your stay. *Disney's Magical Express<sup>®</sup>* – Take advantage of the latest innovation in Disney's legendary commitment to service and convenience. This exclusive complimentary shuttle and luggage delivery service conveniently takes you from the airport directly to your Disney Resort and back again when it's time to return. It's the hassle-free benefit that allows you to arrive at your meeting relaxed and stress-free. To book, call 407-939-4686 or visit [MyDisneyGroup.com/Echo17](http://MyDisneyGroup.com/Echo17) for more information.

During your stay, enjoy the convenience of Disney transportation throughout the Walt Disney World<sup>®</sup> Resort. Just steps from your door, boats and motor coaches are waiting to take you to and from the Theme Parks, Water Parks, the Downtown Disney<sup>®</sup> area and more.

© Disney



# Invited Faculty

# Schedule of Events

## Course Director

**Gerard P. Aurigemma, MD, FASE**  
UMass Memorial Medical Center  
Worcester, MA

## Learning Lab Director

**Deborah A. Agler, ACS, RDCS, FASE**  
Cleveland Clinic  
Cleveland, OH

## Faculty

**Steven A. Goldstein, MD, FASE**  
MedStar Washington  
Hospital Center  
Washington, DC

**John Gorcsan III, MD, FASE**  
University of Pittsburgh  
Pittsburgh, PA

**Rebecca T. Hahn, MD, FASE**  
Columbia University  
New York, NY

**Omar K. Khalique, MD, FASE**  
Columbia University  
Medical Center  
New York, NY

**Matthew Parker, MD**  
UMass Memorial Medical Center  
Worcester, MA

## Course Co-Director

**Linda D. Gillam, MD, FASE**  
Morristown Medical Center  
Morristown, NJ

**Muhammed Saric, MD, PhD, FASE**  
New York University  
New York, NY

**Vincent L. Sorrell, MD, FASE**  
University of Kentucky  
Lexington, KY

**Karen Stout, MD**  
University of Washington  
Seattle, WA

**Wendy Tsang, MD**  
University of Toronto  
Toronto, Ontario, Canada

**Seth Uretsky, MD**  
Morristown Medical Center  
Morristown, NJ

## Saturday, October 7, 2017

### Learning Lab: LV Function and Strain *(Additional Fee Required)*

7:00 AM	<b>Breakfast</b>
7:45 AM	<b>Introduction to the Learning Lab</b> <i>G. Aurigemma</i>
7:55 AM	<b>Basic Left Ventricular Function</b> <i>G. Aurigemma, V. Sorrell</i>
8:15 AM	<b>Introduction to Strain: Theory and Applications</b> <i>J. Gorcsan</i>
8:55 AM	<b>Optimizing Imaging for Strain</b> <i>D. Agler, J. Gorcsan</i>
9:55 AM	<b>Refreshment Break</b>
10:25 AM	<b>Workshop IA: Vendor Specific for strain</b> <i>G. Aurigemma, M. Parker, V. Sorrell</i>
10:25 AM	<b>Workshop IIA: Vendor Specific for strain</b> <i>J. Gorcsan, M. Saric</i>
12:25 PM	<b>Lunch and Visit Exhibits</b>

### Learning Lab: 3D Workshop *(Additional Fee Required)*

1:25 PM	<b>Introduction of Learning Lab</b> <i>G. Aurigemma</i>
1:30 PM	<b>Cardiac Anatomy: Learning the Basics for 3D</b> <i>R. Hahn</i>
1:55 PM	<b>Introduction to 3D Acquisition: Live Demo</b> <i>W. Tsang</i>
2:25 PM	<b>3D Volume Quantitation</b> <i>W. Tsang</i>
2:55 PM	<b>3D Valvular Rendering</b> <i>R. Hahn</i>
3:25 PM	<b>Workshop II A: Vendor Specific 3D Solutions for Valvular Disease and Left Ventricular Volumes</b> <i>R. Hahn, O. Khalique</i>
3:25 PM	<b>Workshop II B: Vendor Specific 3D Solutions for Valvular Disease and Left Ventricular Volumes</b> <i>M. Parker, W. Tsang</i>



# Schedule of Events

<b>Sunday, October 8, 2017</b>			
<b>General Echocardiography</b>			
7:00 AM	<b>Breakfast and Visit Exhibits</b>		
7:45 AM	<b>Welcome</b> <i>G. Aurigemma</i>	3:00 PM	<b>Regurgitant Valvular Quantitation: What is New in the Guidelines</b> <i>R. Hahn</i>
7:50 AM	<b>Past President's Address</b> <i>L. Gillam</i>	3:20 PM	<b>Where Contrast Administration Makes a Difference</b> <i>L. Gillam</i>
8:00 AM	<b>Chamber Quantification Guidelines Update I: Left Heart Measurements</b> <i>D. Agler, L. Gillam</i>	3:40 PM	<b>Stress Echo Cases: Are You As Good As The Experts?</b> <i>M. Saric, V. Sorrell</i>
8:25 AM	<b>Chamber Quantification Guidelines Update II: Right Heart Measurements</b> <i>D. Agler, S. Goldstein</i>	4:00 PM	<b>Goofs, Coups, and Things I Have Learned in the Past Year: Part II</b> <i>S. Goldstein, M. Saric, V. Sorrell, S. Uretsky</i>
8:45 AM	<b>Strain, Strain Rate, and Torsion: Myocardial Mechanics Simplified and Applied</b> <i>J. Gorcsan</i>	4:45 PM	<b>Adjourn</b>
9:15 AM	<b>2016 ASE Diastolic Function Guidelines: Relax!</b> <i>G. Aurigemma</i>	<b>Monday, October 9, 2017</b>	
9:40 AM	<b>Optimizing Echo Acquisition for Strain and Diastology</b> <i>D. Agler</i>	<b>Valvular Heart Disease Part I</b>	
10:05 AM	<b>Question and Answer</b>	7:00 AM	<b>Breakfast and Visit Exhibits</b>
10:15 AM	<b>Refreshment Break and Visit Exhibits</b>	7:45 AM	<b>Basic and Advanced Assessment of Aortic Stenosis</b> <i>R. Hahn</i>
10:45 AM	<b>Strain Cases: Where it Makes a Difference in 2017</b> <i>G. Aurigemma, J. Gorcsan, V. Sorrell</i>	8:20 AM	<b>Low Gradient, Severe Aortic Stenosis: Dobutamine Echo to the Rescue</b> <i>L. Gillam</i>
11:10 AM	<b>3D Echo: Acquisition, Cropping, and Display</b> <i>W. Tsang</i>	8:40 AM	<b>Back to Basics: Common Errors in Quantitation in Everyday Practice</b> <i>G. Aurigemma, S. Goldstein, R. Hahn</i>
11:30 AM	<b>Cases: 3D Application in Practice</b> <i>R. Hahn, W. Tsang</i>	8:55 AM	<b>Rheumatic and Degenerative, Calcific Mitral Stenosis</b> <i>O. Khalique</i>
11:50 AM	<b>Goofs, Coups, and Things I Have Learned in the Past Year: Part 1</b> <i>G. Aurigemma, L. Gillam, R. Hahn, W. Tsang</i>	9:10 AM	<b>Assessing Prosthetic Valve Function: Differentiating Normal From Stenotic or Regurgitant</b> <i>M. Parker</i>
12:10 PM	<b>Lunch and Visit Exhibits</b>	9:30 AM	<b>Question and Answer</b>
1:10 PM	<b>Multimodality Imaging of Diseases of the Thoracic Aorta in Adults</b> <i>S. Uretsky</i>	9:50 AM	<b>Refreshment Break and Visit Exhibits</b>
1:30 PM	<b>Guidelines for the Use of Echocardiography in the Evaluation of a Cardiac Source of Embolism</b> <i>M. Saric</i>	<b>Valvular Heart Disease Part II</b>	
1:50 PM	<b>Clinical Recommendations for Multimodality Cardiovascular Patients with Pericardial Disease</b> <i>S. Goldstein</i>	10:20 AM	<b>A View From the Other Side: Role of Mitral Regurgitation in Assessing Valvular Regurgitation</b> <i>S. Uretsky</i>
2:10 PM	<b>Expert Consensus for Multimodality Imaging Evaluation of Adult Patients During and After Cancer Treatment</b> <i>V. Sorrell</i>		
2:30 PM	<b>Refreshment Break and Visit Exhibits</b>		

# Schedule of Events

10:40 AM	<b>Echo in Asymptomatic Mitral Regurgitation and Aortic Regurgitation</b> <i>M. Saric</i>
11:00 AM	<b>Goofs, Coups, and Things I Learned This Past Year: Part III</b> <i>S. Goldstein, M. Parker, M. Saric, S. Uretsky</i>
11:40 AM	<b>Question and Answer</b>
12:00 PM	<b>Lunch and Visit Exhibits</b>
1:00 PM	<b>Restrictive and Infiltrative Cardiomyopathy: Recognition By Echo</b> <i>G. Aurigemma</i>

## Heart Failure

1:20 PM	<b>Hypertrophic Cardiomyopathy</b> <i>L. Gillam</i>
1:40 PM	<b>Cases: Strain in Myocardial Disease</b> <i>J. Gorcsan</i>
2:00 PM	<b>MRI in Myocardial Disease: Where You Must Use It in 2017</b> <i>V. Sorrell, S. Uretsky</i>
2:20 PM	<b>Question and Answer</b>
2:40 PM	<b>Refreshment Break and Visit Exhibits</b>
3:10 PM	<b>Cases: Discrepant Valvular Quantification: Stenosis</b> <i>L. Gillam</i>
3:30 PM	<b>Cases: Valvular and Myocardial Disease: Regurgitation</b> <i>O. Khalique</i>
3:50 PM	<b>Stump the Stars: Echo Cases and Discussion</b> <i>G. Aurigemma, L. Gillam, O. Khalique, M. Parker</i>

## Fun and Games

4:20 PM	<b>Kahoot: Echo Quiz</b> <i>J. Gorcsan</i>
5:00 PM	<b>Adjourn</b>

*“Very helpful course!  
The faculty always have  
a great and clear way of  
presenting the topics.”*

*2017 Echo Florida Attendee*

## Tuesday, October 10, 2017

### Clinical Echocardiography

7:00 AM	<b>Breakfast and Visit Exhibits</b>
8:00 AM	<b>TAVR: Procedure Guidance By Echo</b> <i>M. Saric</i>
8:25 AM	<b>The Forgotten Valve: New Tricuspid Interventions</b> <i>R. Hahn</i>
8:50 AM	<b>Percutaneous Mitral Valve Repair</b> <i>S. Goldstein</i>
9:10 AM	<b>What I Have Learned from 3D Imaging of Heart Valve Disease</b> <i>S. Goldstein, R. Hahn</i>
9:40 AM	<b>Left Atrial Appendage Closure Devices</b> <i>M. Saric</i>
10:00 AM	<b>Refreshment Break and Visit Exhibits</b>
10:30 AM	<b>Cases: Interventional Imaging</b> <i>S. Goldstein, R. Hahn, O. Khalique, M. Parker</i>
11:10 AM	<b>Congenital Heart Disease Part I: The Unrepaired Adult</b> <i>K. Stout</i>
11:30 AM	<b>Congenital Heart Disease Part II: The Repaired Adult</b> <i>K. Stout</i>
11:50 AM	<b>Infectious Endocarditis</b> <i>S. Goldstein</i>
12:10 AM	<b>Athlete’s Heart vs. Cardiomyopathy?</b> <i>K. Stout</i>
12:30 PM	<b>Question and Answer</b>
1:00 PM	<b>Lunch and Visit Exhibits</b>
2:00 PM	<b>The Role of Echo in Pulmonary Hypertension</b> <i>S. Goldstein</i>
2:20 PM	<b>Pregnancy and Heart Disease: The Role of Echo</b> <i>K. Stout</i>
2:40 PM	<b>Cases: Stress Testing in Valvular Disease</b> <i>M. Saric, V. Sorrell</i>
3:00 PM	<b>Cases: Adult Congenital Heart Disease</b> <i>K. Stout</i>
3:20 PM	<b>Stump the Stars: Echo Cases and Discussion</b> <i>G. Aurigemma, S. Goldstein, J. Gorcsan</i>
4:00 PM	<b>Adjourn</b>





**ASE** Foundation

American Society of Echocardiography  
2100 Gateway Centre Blvd.  
Suite 310  
Morrisville, NC 27560

NON PROFIT ORG  
US POSTAGE  
PAID  
RALEIGH, NC  
PERMIT #1854

# ECHO FLORIDA

**October 8-10, 2017**

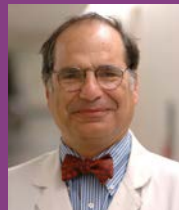
**Preconferences available on October 7**

**October 7: Learning Lab**

**October 8-10: Main Conference**

REGISTER NOW at

**[ASEcho.org/echoflorida](http://ASEcho.org/echoflorida)**



Course Director  
**Gerard P. Aurigemma, MD, FASE**  
UMass Memorial Medical Center  
Worcester, MA



Course Co-Director  
**Linda D. Gillam, MD, FASE**  
Morristown Medical Center  
Morristown, NJ



Learning Lab Director  
**Deborah A. Agler, ACS, RDCS, FASE**  
Cleveland Clinic  
Cleveland, OH