



Software Download and Access Instructions – Echo Test and Teach (Public Demo)

SUP-000017-B

Effective Date: 12-10-2015

Page 1 of 2

New User Registration and Access

To register for an account and download the Unit Modeler® Application Runner, access the following website: <http://www.kelabs.com/download>

From here you can download the installer for the Application Runner. Upon running the application for the first time you will be prompted to register a new account and log in.

After you log in, you should see the Unit Modeler® Desktop. Double-click the **Public Workspaces** icon.



In the Public Workspaces window, select the **Echo Test and Teach Public Demo** workspace and click **Join**.

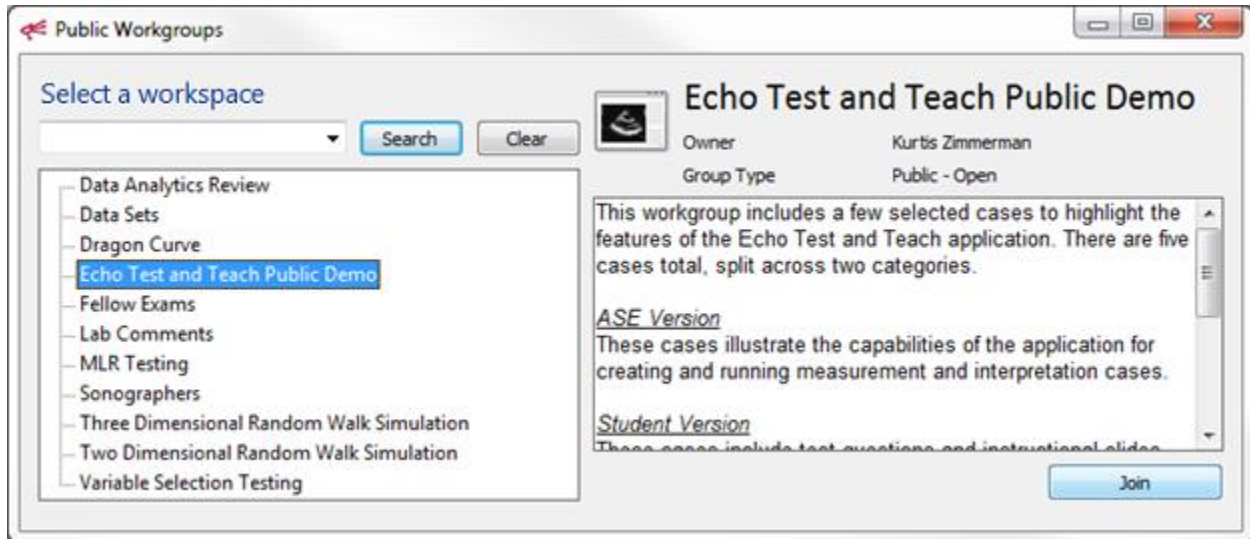


Software Download and Access Instructions – Echo Test and Teach (Public Demo)

SUP-000017-B

Effective Date: 12-10-2015

Page 2 of 2



The workspace will be immediately loaded, and for future use an icon will be added to your Desktop which can be used to access the workspace again.