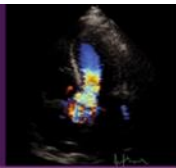


5th
ANNUAL



October 9-11, 2016

Disney's Grand Floridian Resort & Spa
Walt Disney World®, FL

ECHO
FLORIDA



Course Director
Rebecca T. Hahn,
MD, FASE



Course Co-Director
Gerard P. Aurigemma,
MD, FASE

Echo Florida Contacts

Jaclyn Levine, ASE Meeting Planner

Phone: 1-919-297-7171

email: jlevine@asecho.org

Andie Piddington, ASE Corporate Relations Mgr

Phone: 1-919-297-7151

Email: apiddington@asecho.org

Shipping Details

Disney's Grand Floridian Resort & Spa will begin accepting shipments Tuesday, October 4; handling fees from the hotel may apply. Any shipments received before that date may be subject to additional handling charges from the hotel. **YOU MUST ARRANGE AND PAY FOR SHIPPING DIRECTLY WITH THE HOTEL.** Please address shipments as follows:

YOUR NAME – HOLD FOR ASE Echo Florida
Disney's Grand Floridian
4401 Floridian Way
Lake Buena Vista, FL 32830

*Please also attach RICOH labels to your boxes. Please refer to the attached Ricoh information packet to locate labels.

Exhibitor Registration

Exhibitor registration is free. You can pick up your badge on site at the registration area on Saturday. Please send your booth staff names to Andie Piddington as soon as possible.

Booth Details

All booth locations will be assigned based on specific electrical and other needs; booth locations will be assigned on site. Exhibits will include one 6-foot table (two tables for publishers); vendors may bring one backdrop (maximum width 10 feet) and up to two echo machines or similar equipment.

Booth Set-up/Break down

The exhibit hall will be located in Disney's Grand Floridian Resort & Spa, Salon 1-4

Booth set-up time:

Friday, October 7, 2:00 – 5:00 pm

Saturday, October 8, 6:30 am – 5:00 pm

Booth break down time:

Tuesday, October 11, After 1:30pm

Exhibit Hours

Exhibits are located in Salon 1-4 next to the General Session room. Designated exhibit hours are as follows:

Saturday, October 8:

Only 100 workshop attendees will be present Saturday.

Exhibiting Saturday is your choice.

7:00am- 8:00am; 10:15am- 10:45am

12:15pm – 1:15pm; 3:30pm -3:45pm

Sunday, October 9:

Full Conference Begins with an estimated 300 attendees.

7:00am- 8:00am; 10:15am- 10:45am

12:10pm – 1:10pm; 3:00pm-3:30pm

5:00pm- 6:00pm (Attendee Reception in exhibit hall)

Monday, October 10:

7:00am- 8:00am; 9:50am- 10:20am

12:00pm – 1:00pm; 2:40pm-3:10pm

Tuesday October 11:

7:00am- 8:00am; 9:50am- 10:20am

12:30pm – 1:30pm

Electricity, Internet, and A/V

All electrical, internet, and A/V needs are at the expense of the exhibitor. Please refer to the attached form to order electrical and internet through Disney's Grand Floridian Resort & Spa. **YOU MUST ARRANGE AND PAY FOR THIS DIRECTLY WITH THE HOTEL.**