

Symposium on

# Interventional Echocardiography

and Decision-making in Structural Heart Disease

# NEW THIS YEAR!

Immediately after SCA Echo Week 2016

## FINAL PROGRAM

May 7, 2016

Loews Atlanta Hotel

Mercer Ballroom 7:00 AM - 4:00 PM

### Course Co-Director

**G. Burkhard Mackensen, MD, PhD, FASE**

University of Washington Medical Center  
Seattle, WA

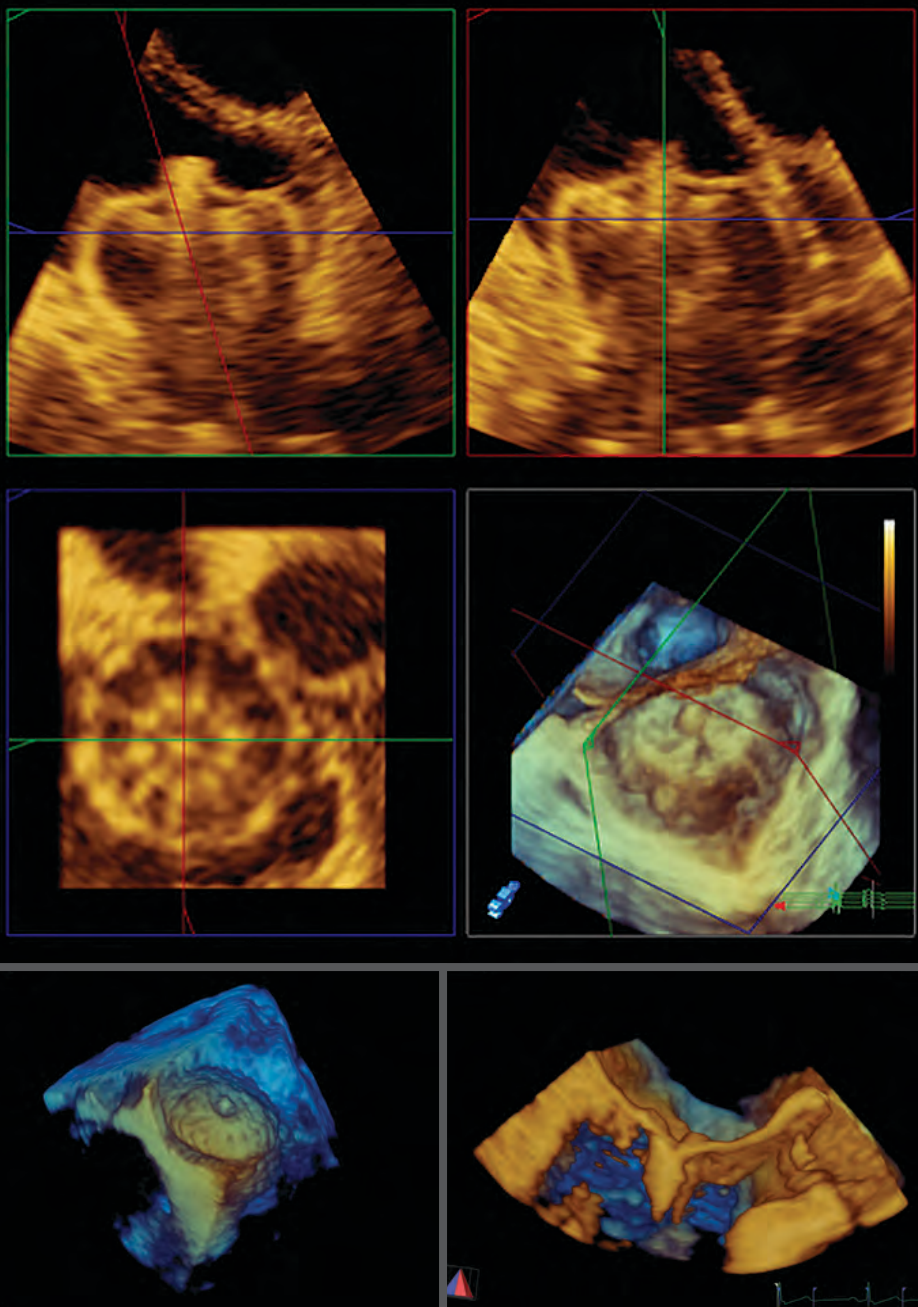
### Course Co-Director

**Sunil Mankad, MD, FASE**

Mayo Clinic  
Rochester, MN

Take advantage of the  
low introductory pricing!

Register at [ASEcho.org/ASESymposium](http://ASEcho.org/ASESymposium)



Jointly provided by ASE and the ASE Foundation, and held in cooperation with the Society of Cardiovascular Anesthesiologists.

# Program Information

# Invited Faculty

## Overview of ASE's Symposium

The Symposium on Interventional Echocardiography and Decision-making in Structural Heart Disease is not only a fantastic new offering immediately following SCA Echo Week 2016, but the content focuses on the role of echocardiography within the structural heart team.

This symposium will feature multidisciplinary experts in interventional echocardiography, interventional cardiology, cardiac anesthesiology, and cardiac surgery – all engaged in the heart valve team approach to structural heart disease. The program is composed of various educational formats including pertinent didactic lectures, interactive illustrations of procedural image guidance during cutting-edge catheter-based structural heart interventions, bio-skills demonstrations that correlate clinical presentations, echocardiographic imaging and actual pathology as well as simulations of heart valve team conferences where structural heart cases are being discussed.

All attendees should have a practical knowledge of echocardiography to fully benefit from this program.

## Target Audience

The Symposium on Interventional Echocardiography and Decision-making in Structural Heart Disease will provide an ideal educational forum for cardiologists, cardiac anesthesiologists, fellows and other trainees, sonographers, surgeons, and others who either perform procedural image guidance with TEE or are involved in catheter-based therapies to structural heart disease.

## Learning Objectives

- Illustrate the utility of real-time two- and three-dimensional transesophageal echocardiography (2D and 3D TEE) in interventional echocardiography
- Demonstrate procedure-specific imaging needs in the structural heart disease domain
- Discuss procedure-specific challenges and how to overcome them with procedural TEE and procedural intracardiac echo (ICE)
- Review appropriate procedure-specific terminology that facilitates communication between the interventional echocardiographer and the interventionalist/surgeon
- Recognize potential complications of percutaneous interventions for structural heart disease using echocardiography to provide safe and more efficacious care
- Define the role of the interventional echocardiographer as a key member of the multi-disciplinary heart valve team



### Course Co-Director

**G. Burkhard Mackensen**

**MD, PhD, FASE**

University of Washington  
Medical Center  
Seattle, WA



### Course Co-Director

**Sunil Mankad**

**MD, FASE**

Mayo Clinic  
Rochester, MN

## Faculty

### Feroze Mahmood, MD, FASE

Beth Israel & Deaconess  
Medical Center  
Boston, MA

### Mark Reisman, MD

University of Washington  
Medical Center  
Seattle, WA

### Randolph Martin, MD, FASE

**Past President, ASE**

Piedmont Heart Institute  
Atlanta, GA

### Douglas Shook, MD, FASE

Brigham & Women's Hospital  
Boston, MA

### Alina Nicoara, MD, FASE

Duke University Medical Center  
Durham, NC

### Frank Silvestry, MD, FASE

University of Pennsylvania  
School of Medicine  
Philadelphia, PA

### Charles Nyman, MBBCH

Brigham & Women's Hospital  
Boston, MA

### Vinod Thourani, MD

Emory Healthcare  
Atlanta, GA

# Schedule of Events

## Saturday, May 7, 2016 - Mercer Ballroom

7:00 am **Registration and Breakfast**

7:20 am **Introduction**  
*B. Mackensen, S. Mankad*

### TAVR

*Moderators: R. Martin, C. Nyman*

7:30 am **TAVR: Anatomic Perspectives of the Interventional Cardiologist**  
*M. Reisman*

7:50 am **TAVR: What the Future Will Look Like**  
*V. Thourani*

8:10 am **TEE in TAVR: Incremental Benefit or Essential Tool?**  
*A. Nicoara*

8:30 am **Question and Answer**

8:40 am **Break**

### MitraClip

*Moderators: F. Mahmood, M. Reisman*

8:45 am **Percutaneous Mitral Valve Repair: Perspectives of the Interventional Cardiologist**  
*M. Reisman*

9:05 am **Routine MitraClip: Image Guidance Step by Step**  
*D. Shook*

9:25 am **How Far to Push: Procedural Imaging for MitraClip Outside of A2/P2 and Beyond**  
*B. Mackensen*

9:45 am **Question and Answer**

10:00 am **Break with Refreshments**

### LAA, PFOs & ASDs

*Moderators: S. Mankad, F. Silvestry*

10:15 am **Complex LAA: Anatomic Perspectives of the Interventional Cardiologist**  
*M. Reisman*

10:35 am **LAA from Simple to Complex: When Expert Imaging Makes All the Difference**  
*F. Mahmood*

10:55 am **Interventional Echo Guidance for Closure of PFO & ASDs: From TEE to ICE**  
*F. Silvestry*

11:15 am **Question and Answer**

11:30 am **Lunch**

## Transcatheter Valves Outside of TAVR

*Moderators: B. Mackensen, D. Shook*

12:30 pm **Preoperative Assessment of Degenerative Bioprosthetic Valves and Paravalvular Leaks**  
*S. Mankad*

12:50 pm **Mitral Valve-in-Valve: Procedural Image Guidance with TEE, a "Must Have" or "Nice to Have"?**  
*B. Mackensen*

1:10 pm **Percutaneous Closure of Paravalvular Leak? When TEE Saves the Day**  
*C. Nyman*

1:40 pm **Question and Answer**

2:00 pm **Break with Refreshments**

### Heart Valve Team

2:15 pm **Simulated Heart Valve Team Meeting: Session A Case Presentations with Focus on Aortic Valve**  
*A. Nicoara* Panelists: *R. Martin, C. Nyman, F. Silvestry, V. Thourani*

3:00 pm **Simulated Heart Valve Team Meeting: Session B Case Presentations with Focus on Mitral Valve**  
*D. Shook* Panelists: *B. Mackensen, S. Mankad, M. Reisman, V. Thourani*

3:45 pm **Putting It All Together**  
*All*

## Accreditation and Designation

This activity has been planned and implemented in accordance with the Essential Areas and Policies of the Accreditation Council for Continuing Medical Education through the joint providership of the American Society of Echocardiography and the American Society of Echocardiography Education and Research Foundation. The American Society of Echocardiography is accredited by the ACCME to provide continuing medical education for physicians.

The American Society of Echocardiography designates this live activity for a maximum of 7.0 AMA PRA Category 1 Credits™. Successful completion of this CME activity, which includes participation in the evaluation component, enables the participant to earn 7.0 MOC points in the American Board of Internal Medicine's (ABIM) Maintenance of Certification (MOC) program. Participants will earn MOC points equivalent to the amount of CME credits claimed for the activity. It is the CME activity provider's responsibility to submit participant completion information to ACCME for the purpose of granting ABIM MOC points.





# Faculty Disclosures

## Disclaimer

The information provided during this CME activity is for continuing education purposes only and is not meant to substitute for the independent medical judgment of a healthcare provider relative to diagnostic and treatment options of a specific patient's condition.

## Disclosure

ASE is committed to ensuring that its educational mission, and all sponsored educational programs are not influenced by the special interests of any corporation or individual, and its mandate is to retain only those speakers whose financial interests can be effectively resolved to maintain the goals and educational integrity of the program. While a monetary or professional affiliation with a corporation does not necessarily influence a speaker's presentation, the Essential Areas and Policies of the ACCME require that any relationship that could possibly conflict with the educational value of the program be resolved prior to the educational session and disclosed to the audience.

In accordance with these policies, ASE implemented mechanisms prior to the planning and implementation of this CME activity to identify and resolve conflicts of interest for all individuals in a position to control content.

## Faculty Disclosure

The following faculty members do not have any relationships with industry/commercial supporters to disclose:

G. Burkhard Mackensen, MD, PhD, FASE

Feroze Mahmood, MD, FASE

Sunil Mankad, MD, FASE

Randolph Martin, MD, FASE

Alina Nicoara, MD, FASE

The following faculty members do have financial relationships with industry/commercial supporters to disclose:

Charles Nyman, MBChB – Edwards Lifesciences Ltd. (Stock Ownership, unmanaged)

Mark Reisman, MD – Edwards Lifesciences LTD (Consultant/Advisor); Abbott Vascular (Consultant/Advisor)

Douglas Shook, MD, FASE – Sorin Group (Education); Edwards Lifesciences Ltd. (Education)

Frank Silvestry, MD, FASE – Edward Lifescience Ltd. (Research Grant Support); Corvia (Research Grant Support)

Vinod Thourani, MD – Edwards Lifesciences Ltd. (Corporate Research Collaboration)

The following members of the ASE CME Committee, Education Committee and Board of Directors (not serving as faculty) do not have any relationships with industry/commercial supporters to disclose:

Karima Addetia, MD, Deborah Agler, RCT, RDCS, FASE, Gerard Aurigemma, MD, FASE, Jeanne Marie Baffa, MD, FASE, Daniel Bourque, MS, RCS, FASE, Renee Bullock-Palmer, MD, FASE, Sheila Carroll, MD, Hollie Carron, RDCS, FASE

Farooq Chaudhry, MD, FASE, Karen Chin, BS, RCS, FASE, Patrick Coon, RCCS, RDCS, FASE, Amanda Dillon, RDCS, Benjamin Eidem, MD, FASE, Kymberly Glyde, RDCS, FASE, Aasha Gopal, MD, FASE, Brooke Harland, MD, RDCS, RVT, FASE, Brandy Hattendorf, MD, FASE, Judy Hung, MD, FASE, Soo Hyun Kim, MD, MPH, RPVI, FASE, Joe Kreeger, RCCS, RDCS, FASE, Shelby Kutty, MD, FASE, Georgeanne Lammertin, MBA, RCS, RDCS, FASE, Melissa LeFevre, RDCS, Jennifer Liu, MD, FASE, Leo Lopez, MD, FASE, Praveen Mehrotra, MD, FASE, Raymond Musarra, RDCS, RCS, FASE, Maryellen Orsinelli, RN, RDCS, FASE, Kim Connors Pace, BS RDCS, RVT FASE, Andy Pellett, PhD, RDCS, FASE, Sue Phillip, RCS, FASE, Juan Carlos Plana, MD, FASE, Brad Roberts, RCS, FASE, Zainab Samad, MD, MHS, Elaine Shea, APS, RCS, FASE, Sasha Shillcutt, MD, FASE, Jeffrey Silbiger, MD, FASE, Timothy Slesnick, MD, FASE, Gbemigan Sofowora, MD, Raymond Stainback, MD, FASE, Cynthia Taub, MD, FASE, Ellen Thompson, MD, FASE, Juan Villafane, MD, FASE, Jennifer Warmsbecker, RDCS, FASE, Ronald Wharton, MD, FASE, Timothy Woods, MD, FASE, Danita Yoerger-Sanborn, MD, FASE

The following members of the ASE ACCME/CME Committee, Education Committee and Board of Directors (not serving as faculty) have relationships with industry/commercial supporters to disclose:

Federico Asch, MD, FASE – Medtronic (Research Grant Support); St. Jude Medical (Research Grant Support); Biotronik (Research Grant Support); Sorin Group (Research Grant Support); Boston Scientific (Research Grant Support); Edwards Lifesciences (Research Grant Support); Abbott Vascular (Research Grant Support); Mitralign (Research Grant Support); Direct Flow (Research Grant Support); Xaltis (Research Grant Support)

Meryl Cohen, MD, FASE – Johnson & Johnson (Stock Ownership), Pfizer (Stock Ownership)

Allan Klein, MD, FASE – Bayer (Steering Committee)

Abhay Laddu, MD – Quintiles (Consultant/ Advisor)

Stephen Little, MD, FASE – St. Jude Medical (Research Grant Support); Abbott Structural (Research Grant Support); Medtronic (Research Grant Support)

Tasneem Naqvi, MD, FASE – Adagio (Stock Ownership); Panasonic CardioHealth Station (Research Grant Support)

Roman Sniecinski, MD, FASE – Grifols Therapeutics (Heparin sensitivity advisory board)

Susan Wiegiers, MD, FASE – Merck (Stock Ownership); Covance (Spouse Employment)

All members of the ASE staff who were involved in the planning and implementation of this activity do not have any relationships with industry/commercial supporters to disclose:

Hilary Lamb, MPA, Chief Operating Officer

Christina LaFuria, Director of Education

Erin McClure, Meeting Planner

Robin Wiegerink, MNPL, Chief Executive Officer



Washington State Convention Center

Seattle, WA

**JUNE 10-14**

[asescientificsessions.org](http://asescientificsessions.org)

